

# Keep Posted EVERY DAY

Our "Daily Bulletin" is the only thing of the kind in Canada. A most complete and reliable record of Failures—Compromises—Business Changes—Bills of Sale—Chattel Mortgages—Writs and Judgments for the entire Dominion.

We issue carefully revised reference books four times a year

R. G. DUN & CO.

Toronto, Montreal, Hamilton, London and all cities in Dominion. U.S. and Europe.

**GEO. H. CUTTRISS,**  
ENGRAVER,  
COPP'S BLOCK,  
HAMILTON,  
ONT.

Engraving for . . .

CATALOGUES  
CIRCULARS  
POSTERS  
and  
GENERAL  
ADVERTISING

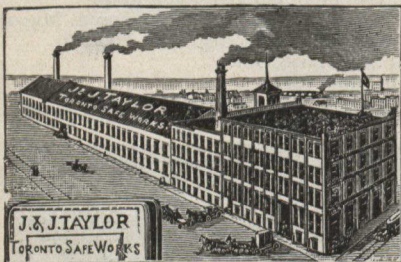
Send for a copy of

"Some Thoughts on Advertising"

Published and distributed free for the benefit of advertisers generally, by The Monetary Times, Toronto.

**TORONTO  
ENGRAVING  
CO 92 BAY ST**

**HIGH GRADE  
ILLUSTRATING  
AND  
ENGRAVING**



ESTABLISHED 1855

**TAYLOR'S**  
DOUBLE TONGUE & GROOVE  
**SAFES**  
145 & 147 FRONT ST. EAST. TORONTO.



FAC-SIMILE OF  
WHITE LABEL ALE

**The Dominion Brewery Co.**

LIMITED

**BREWERS AND MALTSTERS  
TORONTO**

MANUFACTURERS OF THE

**Celebrated White  
Label Ale**

**Ask for it** and see that our Brand is on every cork. Our Ales and Porters have been examined by the best analysts, and they have declared them Pure and Free from any Deleterious Ingredients.

**WM. ROSS, Manager**

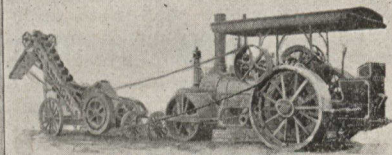
**RODGERS'**

REGISTERED TRADE MARK,  
*Granted by the Cutlery Company.*  
IN 1682.

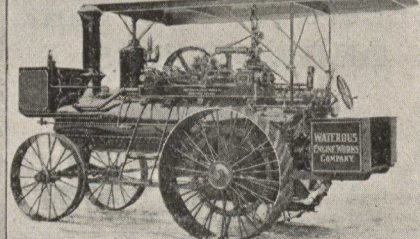
**CUTLERY**

None Genuine without

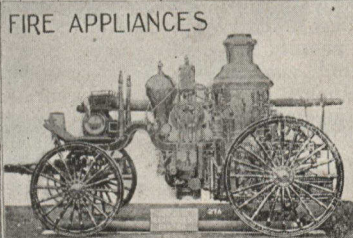
this Exact Mark



ROAD MACHINERY  
ROLLERS ROCK CRUSHERS  
GRADERS & DUMP CARTS.

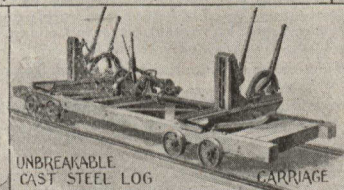


TRACTION DOUBLE CYLINDER ENGINES

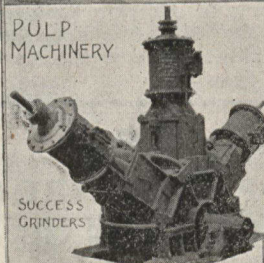


FIRE APPLIANCES

1844  
1901



UNBREAKABLE CAST STEEL LOG CARRIAGE

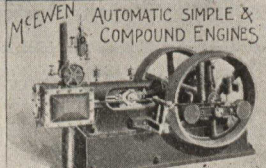


PULP MACHINERY  
SUCCESS GRINDERS

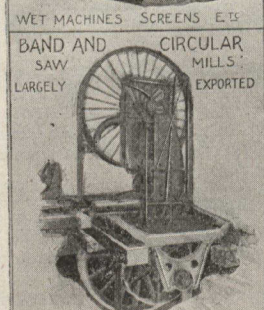


NEW FACTORY  
BUILT IN 1895 SINCE THEN THE FOLLOWING EXTENSIONS HAVE BEEN MADE.  
MACHINE SHOP LENGTHENED 140' NOW 440' x 170'  
BOILER SHOP 100' NOW 220' x 80' (WITH CORRESPONDING  
MOULDING SHOP 100' NOW 180' x 80' (WITH CORRESPONDING  
BLACK SMITH SHOP 80' NOW 100' x 40' IN EQUIPMENT.

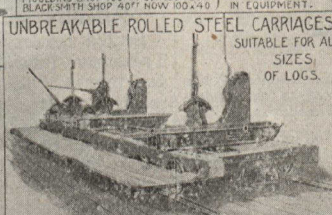
UNBREAKABLE ROLLED STEEL CARRIAGES  
SUITABLE FOR ALL  
SIZES  
OF LOGS.



McEWEEN AUTOMATIC SIMPLE & COMPOUND ENGINES  
SPECIALLY ADAPTED FOR DIRECT ELECTRIC WORK  
MARINE ENGINES & BOILERS.

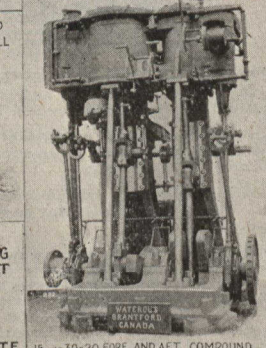


WET MACHINES SCREENS ETC  
BAND AND CIRCULAR  
SAW MILLS  
LARGELY EXPORTED



A.B.C. 8/10 1/2 FIBER-COM. UNION-INER. CABLE  
UNION AND PRIVATE COES USED

OUR LONG EXPERIENCE IN EXPORTING  
MACHINERY IS A GUARANTEE THAT  
SHIPMENTS WILL PROPERLY FILL  
REQUIREMENTS AND ARRIVE IN  
PERFECT CONDITION  
PLANS FURNISHED AND SKILLED  
MECHANICS PROCURED AT MODERATE  
WAGES TO ERECT AND RUN OUR MACHINERY  
FULL LINE OF WOODWORKING MACHINERY



15 AND 30-20 HORSE AND AFT. COMPOUND  
MARINE ENGINE WITH STEAM REVERSE

**WATEROUS** ENGINE  
WORKS  
COMPANY.  
LIMITED

Brantford,  
Canada.