

A. B. C. & A. 1 Codes Used.

Telegraphic Address, Latch, Haymills

LATCH & BATCHELOR, L't'd.

AMALGAMATED WITH
WEBSTER & HORSFALL,

(ESTABLISHED 1730.)

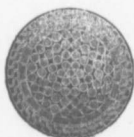
Works : HAYMILLS, BIRMINGHAM, ENGLAND.

AGENT: H. M. WYLDE, P O Box, 529 HALIFAX N. S.

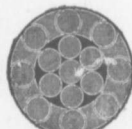
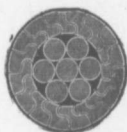
Patentees and Manufacturers of

Locked Coil and Flattened Strand WIRE ROPES.

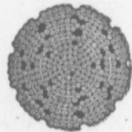
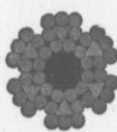
Manufacturers of all Kinds of WIRE ROPES for
**Mines, Tramways, Aerial Ropeways, Suspension
Bridges, Cranes, Elevators, Transmission of
Power, Steam Ploughing and General
Engineering Purposes.**



Locked Coil Winding Cable.



Locked Coil Aerial Cable or Colliery Guide.



Lang's Lay or ordinary Patent Flattened Strand Winding or Hauling. Patent Flattened Strand, (non spinning)

DRAWERS OF all Sections **STEEL-WIRE.**
HIGH CLASS
for Ropes, Springs. Pianos, Needles Fish-Hooks
Binding Armatures and all other Purposes.