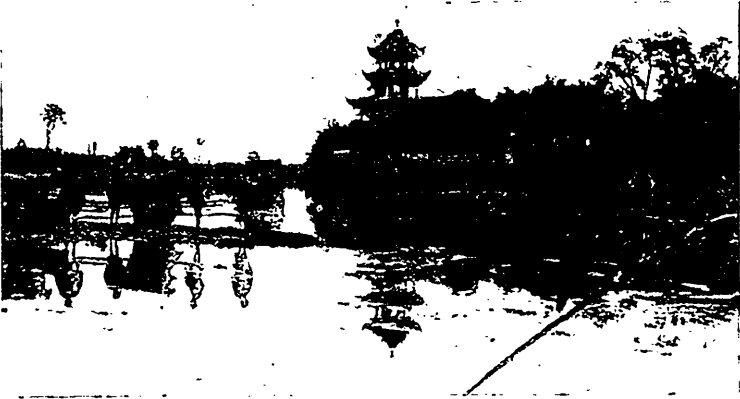


Methodist Magazine and Review.

FEBRUARY, 1904.

OUR MISSION IN WEST CHINA.



WAITING FOR THE FERRY, EAST GATE, CHENTU.



SZ-CHUAN, the province from which recently have come rumours of riot and unrest, is as a centre of trade and civilization by far the most important province of Western China. Mr. Edward Wilson Wallace, son of Professor Wallace, of Victoria University, in his "Heart of Sz-Chuan" has given us an admirable account of the land, its people, and its possibilities.* We congratulate our young friend on the production of this excellent text-book for the use of the Forward Movement.

Sz-Chuan, the banner province

* "The Heart of Sz-Chuan." By Edward Wilson Wallace. The Methodist Young People's Forward Movement for Missions. Text Book No. 2. Toronto: Methodist Mission Rooms. F. C. Stephenson.

VOL. LIX. No. 2.

of China, lies along the eastern boundary of Thibet, over which Britain is at present trying to establish a protectorate. It is peculiar by reason of its isolation. On the north, south, and east it is cut off from the rest of China by rugged and almost impassable mountains. In area it is about 200,000 square miles; in population, about 50,000,000. It is thus the largest province of China, containing one-eighth of the population of the Empire. Something of the density of its population may be realized when we try to conceive of a province slightly smaller than Ontario supporting two-thirds of the people of the United States.

Physically, Sz-Chuan is a country of fertile hills, of garden valleys, and of scenery almost unsurpassed. The slopes of the hills are terraced for agricultural purposes