

GOVERNMENT PUT \$34,000,000 IN CIRCULATION

By Allowing the Canadian Banks to Issue 15 p.c. Extra Circulation

GOVERNMENT GIVES ITS GUARANTEE

Issue is Needed for Emergency Purposes, to Prevent Financial Stringency

Ottawa, Aug. 9.—Thirty-four million dollars of increased note circulation is allowed the Canadian Bank as a result of the decision of the cabinet council last week. The extra circulation authorized—15 per cent. of the paid up capital and reserves.

The paid up capital of all the banks totals \$114,811,775 and the reserves \$112,365,898, a total of \$227,177,673. Fifteen per cent. of this—the extra circulation authorized—amounts to \$34,227,100.95.

There is no limit to the issue of Dominion notes in emergency on the strength of the collateral issued by the banks. To whatever extent such collateral is put up the notes will be issued.

The announcement of Hon. W. T. White, Minister of Finance, followed the passing of the necessary orders-in-council. In dealing with the situation the Government has been in complete working with the Bankers' Association.

It is believed here that the steps taken will be adequate to any emergency and sufficient to ensure the stability of Canadian finance.

If, however, it should prove inadequate, the Government is ready to implement it further to any degree and in any way that is necessary.

Mr. Edgar Bogue arrived by the Digby to attend the annual meeting of the International Grenfell Association. Mr. Bogue, who is staying at the Cochrane, is a solicitor of Lincoln's Inn, London, and represents the Royal National Mission to Deep Sea Fishermen.

GOOD FISHERY AT FOGO ISLAND

Joe Batt's Arm, Aug. 5.—We have had beautiful weather for drying fish for the past week or so. The fish, however, has been very scarce.

The cod nets on the outside grounds have done fairly well but the inshore fishery is practically finished. Report has it that there is a good sign of fish with hook and line at Little Fogo Island and we earnestly hope that such is the case.

All our fishery grounds have been visited by the detestable dogfish which is injurious in every respect to our fishery.

The Fogota brought a large quantity of Union freight on her last trip. What might have been a serious accident occurred while they were transferring freight from the Fogota to the Union boat. The boat was piled up with heavy casks and James Head was standing on top of them when the ship's hook caught in the boat, threw her on her side and the casks began to roll overboard. Head was thrown into the water, but with his usual activity, managed to keep clear of the casks and get aboard the boat again. For the public interest, it would be wise to caution the crews of these ships against handling freight hurriedly.

On Sunday our Naval Reservists left for headquarters in response to the call of duty. Our best wishes go with them and we pray that the Hand of Providence will guide and protect them in all their undertakings.—Vim.

BELGIANS DESTROY GERMAN BRIDGE

Brussels, Aug. 11.—A bridge which the Germans were crossing was shattered by fire from the forts which had the exact range.

The Germans attempted an assault with great courage, and some dead were found directly in front of the barbed wire fences surrounding the forts.

It is reported that Prince William of Lipne and his son were killed charging at the head of German soldiers and that their bodies were buried near the forts.

A bulletin of a London News despatch from Brussels says that it is officially announced there that the German loss in Belgium in the recent fighting was 2,000 dead, 20,000 wounded and 9,000 prisoners.



MOST PERFECT MADE
THE INCREASED NUTRITIOUS VALUE OF BREAD MADE IN THE HOME WITH ROYAL YEAST CAKES SHOULD BE SUFFICIENT INCENTIVE TO THE CAREFUL HOUSEWIFE TO GIVE THIS IMPORTANT FOOD ITEM THE ATTENTION TO WHICH IT IS JUSTLY ENTITLED.
HOME BREAD BAKING REDUCES THE HIGH COST OF LIVING BY LESSENING THE AMOUNT OF EXPENSIVE MEATS REQUIRED TO SUPPLY THE NECESSARY NOURISHMENT TO THE BODY.
E. W. GILLETT CO. LTD.
TORONTO, ONT.
WINNIPEG MONTREAL

WEDDING BELLS

Aylward-Carew

A very quiet and pretty wedding took place at Tor's Cove on Sunday when Mr. Nicholas Aylward, Kilbride, led to the altar Miss Winifred Carew, of Mobile. The bride was attended by Miss Mary Aylward, sister of the groom. The groom was attended by Patrick Craze, brother of the bride. The bride and groom are gone to Cape Broyle to spend their honeymoon. They received many useful presents.

The Mail wishes Mr. and Mrs. Aylward every future happiness.

FORGING AHEAD!

That is the position of The Mail and Advocate, as each issue sees a larger sale. What about that WANT ADVT!

WAR WILL EFFECT THE FISHERIES SERIOUSLY

Says Gloucester Fishing Authority—Will Take Fishermen Away

FROM THEIR WORK AT THE FISHERIES

Will Also Deprive All the French Bankers of Their Crews

Sydney, N.S., Aug. 8.—Speaking of the effect of the present European war on the Gloucester fisheries a resident of that city said that no general alarm was being felt there.

"There are two features which enter seriously into the present situation," he said, "the fishermen for our vessels, raw materials which Nova Scotia and Newfoundland furnish. Both of these provinces furnish a number of fishermen each year, to make up the crews of our fleet, while for the past few years, the dealers have been obliged to depend on Nova Scotia and Newfoundland for a considerable part of their 'green' fish, which is brought here for curing and shipping.

Naval Reserves

"In Newfoundland, 1000 fishermen, members of the naval reserve are liable for duty and have been called. With the calling out of these, the fisheries in that part of the country would be badly crippled, it is admitted.

"Another phase of the situation which is regarded as more than a mere possibility is the results that would follow raid of German war craft on the French, Newfoundland and Nova Scotia fishing fleet now operating on the banks.

"The French fishing fleet over here numbers fully 200 hull including 32 steam trawlers of the latest type, while Lunenburg, N.S., alone has over 120 sail bankers on Quero and Grand Banks. Newfoundland's fleet on the Labrador and rand Bank, numbers over 600 sail.

Represents Millions

"The fleets represent millions of dollars. Not only would there be a huge money loss in the event of seizure or destruction, but it would badly cripple the supply of salt cod, on which the market reckons each year from them. This whole great fleet would be defenseless in the presence of war craft.

"The possible curtailment of the expected supply of salt cod at Gloucester from Nova Scotia and Newfoundland, which last year amounted to almost 15,000,000 pounds and was expected to be more this year, would indeed cripple the chief industry of Gloucester to a marked degree, as well as affecting labor on the wharves and in the skinning lofts, to the extent that many weeks of 'no work could not help resulting.

MRS. W. WILSON LAID TO REST

Washington, Aug. 11.—Simplicity marked the funeral of Mrs. Woodrow Wilson here to-day and out of deference to the wishes of the President the exercises were brief.

There was a forty-minute service at the first Presbyterian Church, where Mrs. Wilson's father, Rev. Dr. Edward Saxon, was pastor for 17 years, and an even shorter ceremony at the Myrtle Hill cemetery.

Because of the limited capacity of the church, only the members of the family and close friends were invited to be present.

NEW ROAD BOARDS

The following new Road Boards have been Gazetted:

Messrs. Henry Earle, Adam Saunders, Samuel Dally, Elijah Jenkins and Stephen Jenkins, to be the Road Board for Springdale, District of Twillingate. Messrs. John Hart, Esahel Hart, Geo. Reid, Nathaniel Cull and Peter Penney, to be the Road Board for Horwood, District of Fogo; Messrs. Eli Beibin, Elam Beibin, Henry Moores, George Pynn and Enos Harris to be the Road Board for New Chelsea, District of Trinity; Messrs. Thos. Sparkes Pleman Button, Stephen Squires, Geo. Barnes, and Samuel Mills, to be the Road Board for Sibley's Cove, District of Trinity; Messrs. Josiah Taylor, Enoch Reid, John Rowe, Simeon Green and Frederick Howell, to be the Road Board for Green's Harbor, District of Trinity; Mr. John Pennel, to be a member of the Road Board for Burgeo, District of Burgeo and LaPolle, in place of Mr. John Vatcher, resigned. Department of Colonial Secretary, August 11, 1914.

READ THE MAIL AND ADVOCATE

Invictus SHOES


Only at this Store can the far-famed **Invictus Shoes**

Be Purchased *Invictus*
More Handsome Shoes
OR
More Satisfactory Shoes
are not to be had at any price.

Our New Stock Has Just Arrived.

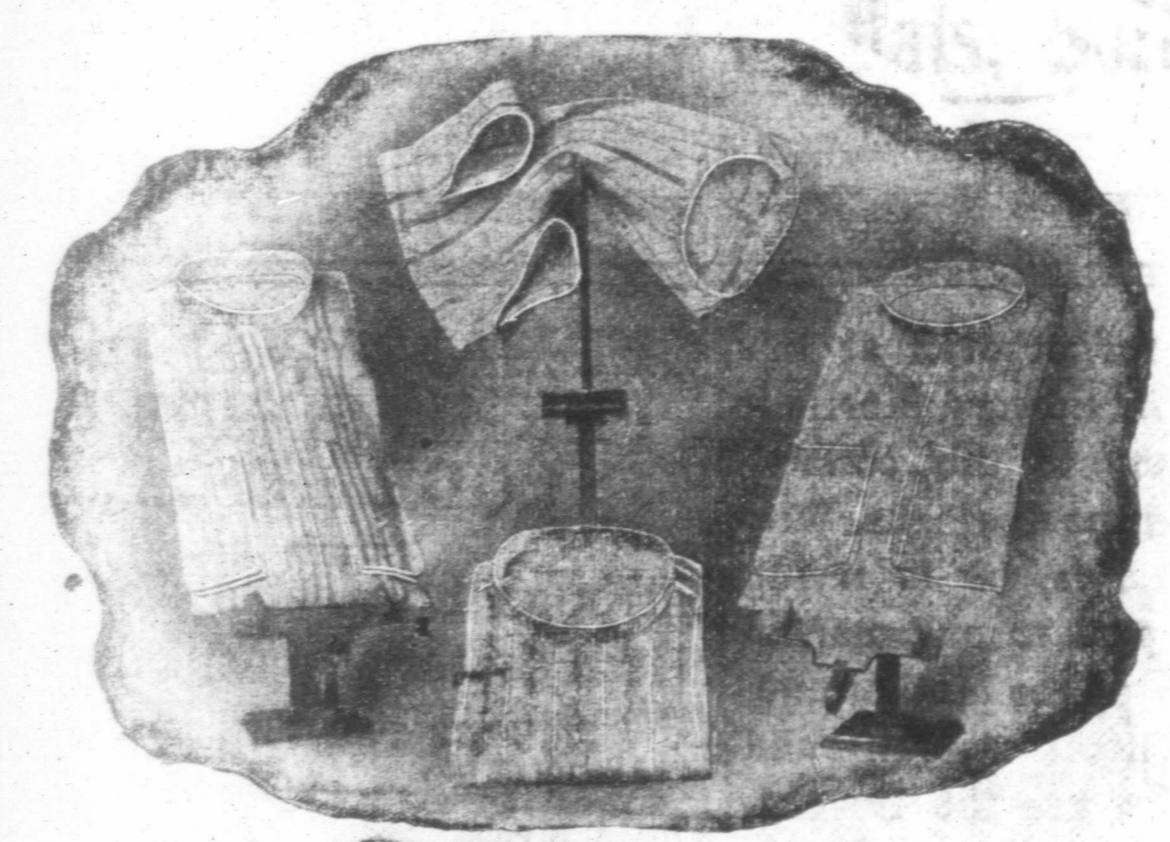
All styles, shapes and leathers may be had in **Invictus Shoes**

MARSHALL BROS.



Seasonable Gent's Furnishing!

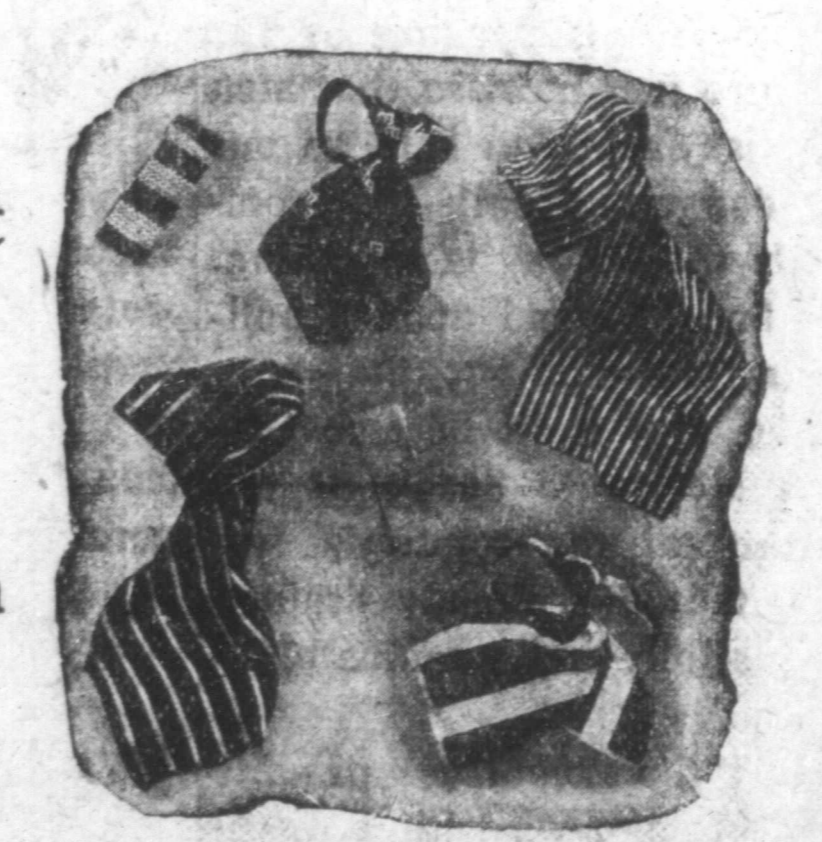
Shirts, Neckties, Straw Hats, Soft Collars, Linen Vests, etc.



SHIRTS.
Men's Fancy American Cambric, Soft front, stiff cuffs 60c.
Plain and Fancy American, Soft Front, Soft Cuffs, some with soft detachable collars. 70c.
Superior Quality fine American Mercerized Cambric, Soft Front, Soft Reversible Cuffs and Soft Detachable Collars. 1.25

Strong English Cambric and Gingham SHIRTS,
Soft front and soft cuffs, the Shirt for hard wear,
80c., \$1.00, \$1.30 & \$1.40.

NECKTIES.
We have a large assortment, newest shapes
15c. to 40c.



Special lot of English and American wide end Scarves, very classy,
30c. & 40c. each.
Soft Collars - - - **15, 17 and 20c.**
Swiss Straw Hats - **70c. and \$1.00**
Fancy Linen Washing Vests - - **\$1.00**

STEER BROTHERS.

EUROPE'S GREAT ALLIANCES BRITISH WARSHIPS IN CANADIAN WATERS

When They Were Formed And For What Purposes—The Triple Entente Much Stronger Than the Triple Alliance

The triple alliance was formed in 1883 between Germany, Austria-Hungary and Italy for the purpose of checking encroachments by Russia and France. The three powers are bound to support one another in certain contingencies.

The exact provisions of the alliance have not been divulged, but are said to have been modified as between France and Italy in 1893.

For many years Great Britain, while not a party to the alliance, was closely linked to it through apprehension of French and Russian aggressiveness, but later, becoming disquieted by the growth of the German naval power, adopted, in 1902, a decided change of policy with a view to seeking in the balance of power greater security against invasion.

Aims of Entente

In pursuance of this policy Great Britain entered into an agreement with France in 1904 and with Russia in 1907. The aims of the triple entente, so called, Great Britain, France and Russia, were substantially as follows:

1. The balance of power.
2. The strengthening of the treaty law in the interests of peace and the status quo.
3. Disarmament.

In the event of a war between the powers of the triple alliance and those of the triple entente the land forces of the entente would exceed by probably a million men those of the alliance.

The strength of the combined navies of the entente in ships, tonnage, armament and number of men would exceed the naval strength of the alliance.

KING ALBERT NOW AT BRUSSELS

Brussels, Aug. 11.—King Albert arrived here during the night from the general headquarters of the Belgian army at Louvain, Northwest of Liege. His Majesty passed several hours in conference with the Belgian Minister of War, after which a cabinet council was held.

It is reported here that civilian hostages held by the Germans in the town of Liege have been released, giving their parole to remain at the disposition of the German authorities.

THE British navy as represented in West Indian waters and thus in close proximity to Canadian waters consists of the following cruisers:—

Suffolk (flagship), Berwick, Essex, Lancaster and Bristol. The first four mentioned are sister ships, a description of which will be interesting in the present state of affairs in Europe. Length between perpendiculars, 440 feet; breadth 65 feet; draught, 24.5 feet; displacement 9,800 tons; speed 23 knots; coal capacity, 1,600 tons. All of these vessels have done 24 knots on service.

Their Armor
They are armored with Krupp steel. A belt of armor extends from the bow for a length of 330 feet, having a width of 11.5 feet, with a thickness of 4 inches amidships, 2 inches forward; after bulkhead 5 inches; conning tower 10 inches; decks on the slopes 0.7 inches; casemates 4 inches; turrets and barbets 5 inches; main deck on the slope 1.2 inches.

Armament: Fourteen 6-inch (45 calibre), four of which are in pairs in turrets fore and aft. Eight of these guns are placed in wing casemates on the broadsides, which gives a direct fire of 6 6-inch guns either ahead or astern. The remaining two guns are on the broadside. They also carry eight 3-inch 12 pounders and three 3-pounders. There are two torpedo tubes 18 inch submerged on the broadside. They carry a crew of 655 each.

The Bristol
As the Bristol is in a class by itself, a description of that vessel is in order, for, in the probability of England having to fight Germany, the Bristol, on account of her great speed, will play an important role in the running down and capturing of big German steamers of the Vaterland class, which are in the habit of sailing out of New York. It may be said that the Bristol is the swiftest warship afloat of any navy in the world on this side of the Atlantic. Length over all, 453 feet, breadth 47 feet; draught, 15 feet; displacement, 4,820 tons; indicated horse power, 22,000; speed on service, that is to say chasing a steamer of the Vaterland class, 26.8 knots or about 31 land miles an hour. The Bristol on her trials developed 24,227 horse power. The decks are armored with two inches of steel. The armament consists of two half inch guns (50 calibre) in shields fore and aft; ten 4-inch (50 calibre) guns in shields amidships, two Maxim

DYNAMITED THE CITADEL

Brussels, Aug. 10.—Liege still holds out. The town itself is invested by Germans, but the forts are still intact and their defenders are masters of the situation. A party of Belgians dynamited the citadel, an ancient fort, to prevent its utilization by the Germans.

READ THE MAIL AND ADVOCATE FOR SALE

A tract of well-wooded land near the City. Conveniently situated for a fox farm; nicely secluded. Apply at this office.—jnc25,1t