

store room ; in the spring the apple barrels had been removed from the cellar to this store room, with the remains of the winter's fruit. The warm weather was then maturing the Pomonellas, and the south windows of the old house were literally swarming with them, large sized and in perfect condition. I took three dozen and might have taken as many hundreds.

The sequence and nomenclature of the following species is in accordance with the most recent decision of the authorities.

Pyrallis, Linn. *Asopia*, Tr. *costalis*, Fab. *fimbrialis*, S. V.

Pyrallis costalis, Linn. The Clover hay-moth (Fig. 15.) Expanse of wings, about three-fourths of an inch ; varies considerably in size. Colors: Front wings glassy purplish brown and golden yellow ; hind wings lighter. An introduced species.

For full description of its nature and habits see the Twelfth Annual Report of the Entomological Society of Ontario. It was quite plentiful in some of the hay lofts of London last summer. The figures represent it in its various stages.

Mr. T. H. Hill, of London South, secured a very remarkable form of it last summer. The ground colour is a rich apple green, which, combined with the golden yellow of the spots, margin and fringes, makes it an exceedingly attractive object to contemplate.

Mineola, Hulst. *Phycis*, Haw. *indigenella*, Zell. *nebulo*, Walk.

Mineola indigenella, Zell. The Apple leaf crumpler (Fig. 16). Expansion of wings about seven-tenths of an inch. Colors: Pale brown and silvery white ; hind wings brownish white. Introduced. (See Fourteenth Annual Report).

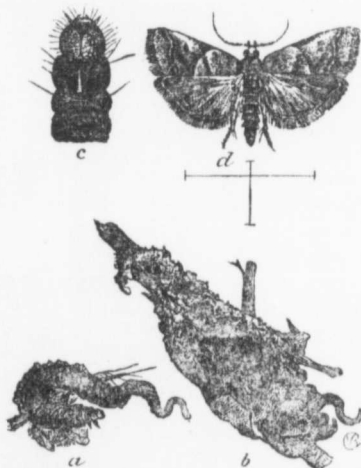


Fig. 16.

Zophodia, Hub. *Dakrura*, Grote. *grossulariæ*, Pack. *convolutella*, Hubn.

Zophodia grossulariæ, Pack. The Gooseberry fruit worm (Fig. 17). Expanse of wings, nearly an inch. Colors: Pale gray with darker streaks and bands. (See Second, Seventh and Nineteenth Annual Reports).

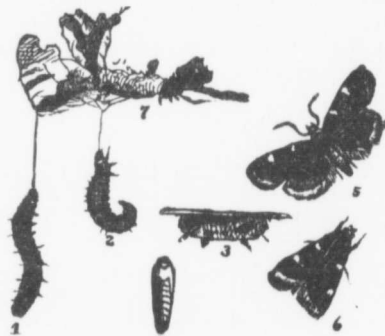


Fig. 15.



Fig. 17.

Canaris
Canaris
wings, not c
natural size.
wings, with s
The Lar
the upper su
figure are poi

Plodia,
Plodia i
about half a
Report).

A few y
for some tin
breeding plac
of the barrel,
pieces of appi

Cacæcia,
Cacæcia
wings about
markings of d

A very g
Twenty-secon
ant here last
a thick under
they could ha
first part of
attention of
dozens.

Cacæcia



Fig. 21.

Retinia (miner. Fig.