

## Two Lake Simcoe Houses

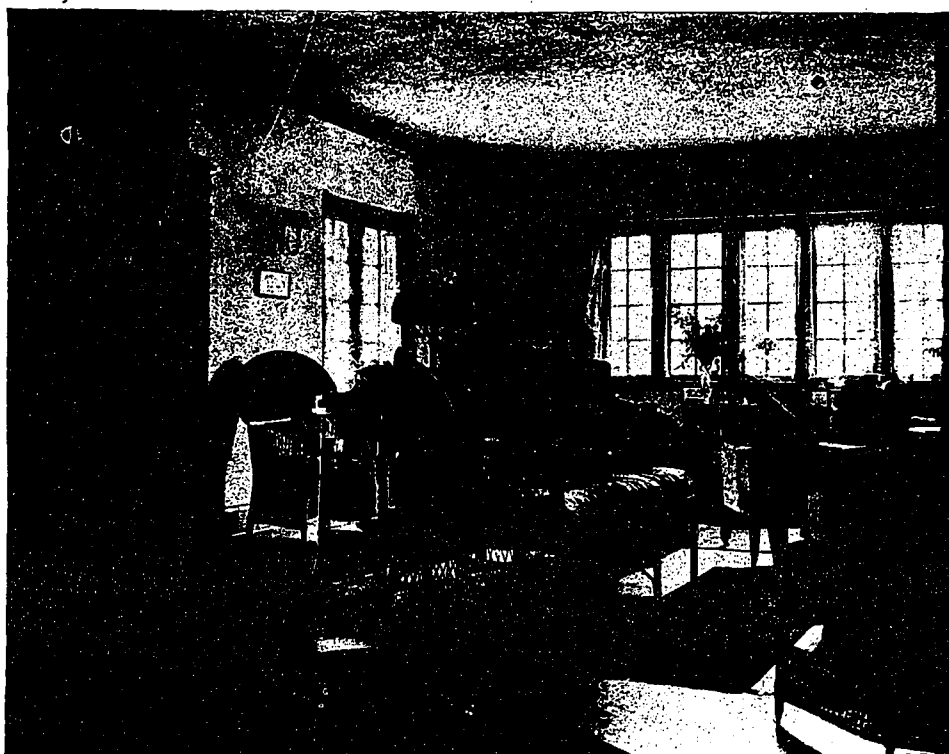
Scarcely less important than the designing of a house is the planning of the grounds which surround it. Only too frequently we see attractive houses completely ruined by ill-considered incongruous settings. For instance the quiet dignity of a Georgian city residence may be entirely spoiled by grounds lacking that degree of formality which alone could bring them in harmony with the building. Or again, a country house of rambling picturesqueness may have its lawns disfigured by beds of Canmas and Salvia, such as are usually associated with a city park.

In designing a garden it should be borne in mind that it cannot be considered as a unit in itself. Since it is dominated by the house it must of necessity be subservient to it, therefore, that portion of the grounds which immediately surround it should conform to its architectural style. The most successful garden is the one which is planned at the same time as the house and in conjunction with it. In no other manner can such a harmonious result be produced. No rule of thumb methods can be adopted in the designing of gardens, each site suggests its own requirements and many a pre-conceived rule has to be abandoned in order to preserve existing features of value or to adjust the design to difficult topographical conditions.

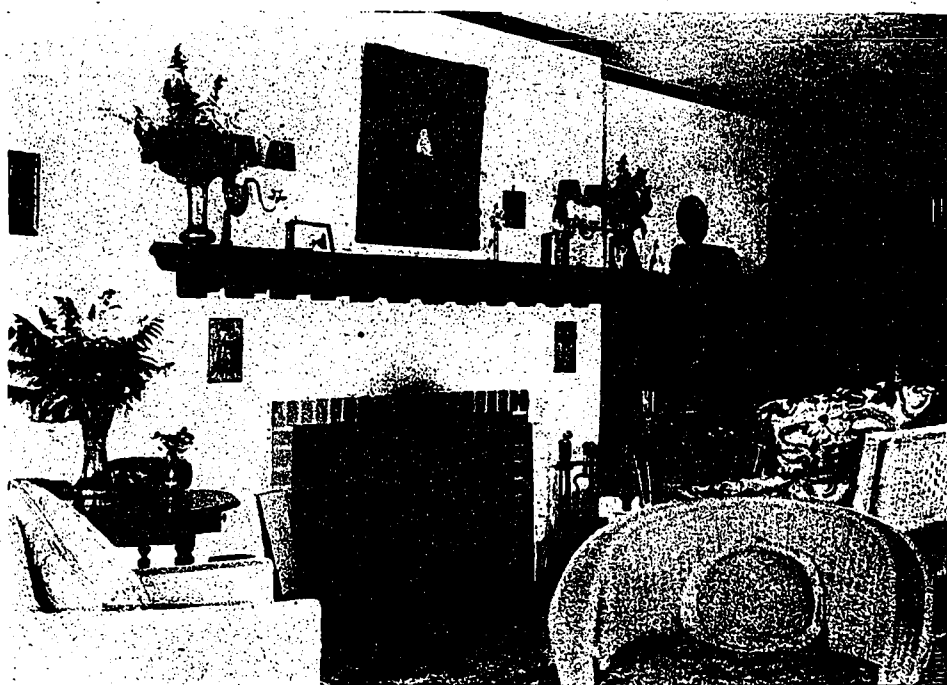
In the case of Mr. H. H. Mason's property at Lake Simcoe, there were but few obstructions to be considered. The land which has a gentle slope from the main road to the lake was devoid of trees except at the fringe of the lake shore. In order to obtain a good view across the lake and at the same time take full advantage of a south aspect for the flower garden, the house was placed near the north boundary close to the lake

front. The entrance to the property is at the northeast corner and the driveway follows irregularly the north boundary to the carriage court at the east end of the building.

In order to give the house the desired feeling of elevation and to minimize the appearance of the ground falling towards the building, the main flower garden on the south front has been sunk 2½ feet. The sunken garden when completed will be laid out with formal flower beds grouped round a lily pond. A pergola at the



LIVING ROOM.



FIREPLACE IN LIVING ROOM.

MASON HOUSE,

NEAR ROCHES POINT, LAKE SIMCOE.