

quite a number of belligerents would be ready to enter into action, and the slaughter, no doubt, would be great.

How arrangements were to be made so that so large a number of single combats could be provided for, has not yet been made public.

Chess is evidently enlarging its sphere, and soon, we suppose, armies of players will have to be marshalled and disciplined, and the quiet unassuming contest of two amateurs over the board will be one of the things of a by gone age.

The arrangement for the awarding of the prizes in the coming Vienna Tournament is worthy of consideration, and is much more likely to reach the end intended by the promoters of such enterprises than any previous plan. In former encounters of a like nature there has been no provision made to give a first rate player a chance of recovering himself to some extent, should he, by one or two unlucky oversights, have been unsuccessful.

In the present instance, every player who fails to obtain one of the highest prizes secures a reward for his success should he manage to play with such skill as to defeat contestants who may have been enabled to count a much larger number of won games than himself.

By former arrangements, a player might defeat each of the prize winners in a tourney, and yet come out very low in the list, owing to carelessness, accidents, or to a disposition to under-rate some of his antagonists. In such a case, although it is but fair that he should incur the penalty attached to each failure, it is evident his success with his more skillful competitors meets with no recognition. In the Vienna match this is to be provided for, and we hope to see the practice carried out in all future tourneys.

We learn that Capt. Mackenzie and Mr. Max Judd have been invited to the Vienna Tournament which takes place next May. These two gentlemen, with Mr. Mason who has signified his intention of entering the lists on that occasion, will represent most efficiently the chessplayers of the United States.

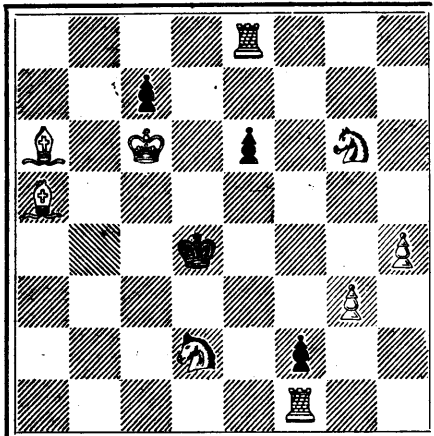
From all reports, the gathering at Vienna will be made up of a large number of the best players the world can produce at the present time, and a high position will be attained who may come out in the struggle at the head of all competitors.

Captain Mackenzie contemplates entering the grand International Tourney at Vienna, which begins on the 10th of May. It is his desire and intention to do so provided that he can complete his arrangements for the trip in time. We should be very glad to see our country represented in that great contest by Capt. Mackenzie, and we sincerely hope he may be able to do so. The entries close on the 2nd of May, and it is not known who are to take part, but we learn from private advices from Vienna that the indications are that there will be an unprecedented array of chess talent. *Turf, Field and Farm.*

## PROBLEM NO. 377.

By Lieut. Col. J. E. Addison.

BLACK.



WHITE.

White to play and mate in two moves.

Solution of Problem No. 375.

White. Black.  
1. Q to Q B 2 1. any  
2. Mate acc.

## GAME 504TH.

(From Land and Water.)

One of twelve simultaneous games played by Mr. E. Thorold, at the Bristol and Clifton Chess Association on the 16th November last.

(King's Gambit.)

White.—(Mr. Thorold) Black.—(Mr. H. M. Pride ux.)

1. P to K 4 1. P to K 4  
2. P to K B 4 2. P takes P  
3. Kt to K B 3 3. P to Q 4 (a)  
4. P to K 5 (b) 4. R to K 3 (e)  
5. P to Q 4 5. Kt to K 2  
6. B takes P 6. P to K R 3  
7. B to Q 3 7. Kt to B 4  
8. Castles 8. B to K 2  
9. P to B 3 9. Kt to Q 2  
10. Q Kt to Q 2 10. Kt to R 4  
11. P to K Kt 4 (d) 11. Kt to R 5  
12. P to K R 3 12. P to K R 4 (e)  
13. P to Kt 5 13. Kt takes Kt (ch)  
14. Kt takes Kt 14. B takes R P  
15. Q to Kt 3 15. B takes R  
16. B takes B 16. Q R to Kt sq  
17. P to B 4 17. P to Q B 3 (f)  
18. P takes P 18. Q takes P  
19. B to Q B 4 19. Q to K 5  
20. B takes P (ch) 20. K to Q sq  
21. Q to K 3 (g) 21. Q takes Q (ch)  
22. B takes Q 22. Kt to Q 2  
23. P to K 6 (ch) 23. Kt takes P  
24. Kt to Kt 5 (ch) 24. K to Q 3  
25. Kt to Kt 6 25. B takes P (h)  
26. B to B 2 26. P to R 5  
27. Kt takes R 27. R takes Kt  
28. K to R sq (i) 28. R to K B sq  
29. B takes Kt 29. K takes B  
30. K to Kt 2 30. K to Q 4  
31. R to K sq 31. B to B 3 (j)  
32. R to Q sq 32. P to K Kt 4  
33. P to Kt 4 33. R to K sq (k)  
34. R to Q B sq 34. B takes P  
35. B takes B 35. K takes B  
36. K to B 3 36. R to K 4  
37. R to Q sq (ch) 37. K to B 5  
38. R to B sq (ch) 38. K to Kt 4  
39. P to R 3 39. K to R 5  
40. R to B 3 40. P to R 6  
41. K to Kt 3 41. P to R 7  
42. K takes P 42. R to K 7 (ch)

43. K to Kt 3 43. R to Q R 7  
44. R to B 5 44. K takes P  
45. P to Kt 5 45. P takes P  
46. R takes Q Kt P (l)

## NOTES.

(a) Courteously declining the Allgater-Thorold attack which would doubtless have followed.

(b) Not so good as 4 P takes P, which yields White some superiority.

(c) B to K 2, threatening B to R 5 (ch) would be an advantageous continuation.

(d) Too early. Our choice is 11 Q to B 2, which serves development and reserves promising lines of play.

(e) Skillfully played, and gain of some kind must accrue to him therefrom.

(f) As the result of Mr. Thorold's prompt sacrifice of the exchange, Black is subject to some embarrassment. The correct move here is 17 Kt to K 3.

(g) According to our opinion 21 B to R 2 is very much superior. Had that move been made we would take White's game for choice.

(h) The position is here highly interesting and particularly difficult. Black, however, shows himself fully equal to the occasion. The move selected by him is the best on the board, and it yields him a decided superiority.

(i) White must expect the worst of it in any case, but his best resource, according to our notions, is 28 R to K sq. Kt to B 5, 29 B to Q Kt 3.

(j) Black could here force the game, e.g., 31 P to R 6 ch, 32 K takes P, R takes B, 33 R to K 5 ch, K takes P, 34 R takes B, R takes P, winning easily; or, 31 P to R 6 ch, 32 K to Kt sq, or Kt 3, R takes B, winning still more easily.

(k) By this and other moves afterwards he lengthens the game. The correct play here is 33 P to Kt 5.

(l) Mr. Thorold, who lives at Bath, had now to leave for his train. Black has a clear win by 46 P to Kt 9; not, however, that the other side should resign, for similar endings have been drawn before now, even between first-rates.

## Montreal Post-Office Time-Table.

APRIL, 1882.

DELIVERY.		MAILS.		CLOSING.	
A. M.	P. M.	ONT. & WESTERN PROVINCES.		A. M.	P. M.
8 9 00		(A) Ottawa by Railway		8 15	8 00
8 8 40		(A) Province of Ontario, Manitoba & B. Columbia Ottawa River Route up to Carleton		8 15	8 00
		QUE. & EASTERN PROVINCES.			
		Quebec, Three Rivers, Sherbrooke, Sorel, per steamer.			
	5 35	Quebec, Three Rivers, Sherbrooke, &c., by Q. M. O. & O. Railway		1 50	8 00
8 00		(B) Quebec by G. T. Ry.		8 00	
8 00		(B) Eastern Townships Three Rivers, Arthabaska & Riviere du Loup R. R.		8 00	
	12 50	Occidental Railway Main Line to Ottawa.		7 00	
9 20		Do St. Jerome and St. Lin Branches		4 30	
	8 00	Do St. Jerome & St. Janvier		7 00	
10 00		St. Remi, Hemmingford & Laprairie Railway		2 15	
8 00	12 45	St. Hyacinthe, Sherbrooke, Coaticook, &c.		6 00	2 15
8 00		Acton and Sorel Railway		8 00	
10 00		St. Johns, Stanbridge & St. Armand Station		7 00	
10 00		St. Johns, Vermont Junction & Sheffield Railway		2 15	
9 00		South Eastern Railway		4 45	
8 00		(H) New Brunswick, Nova Scotia & P. E. I. Newfoundland, forwarded daily on Halifax, whence despatch is by the Packet leaving Halifax on the 10th and 24th April.		8 00	
		LOCAL MAILS.			
9 45		Valleyfield, Valois & Dorval.		4 30	
11 30		Beaubien Route.		6 00	
11 30		Boucherville, Contrecoeur, Verennes & Vercheres.			
9 00	5 30	Cote St. Antoine and Notre Dame de Grace.		9 00	1 45
9 00	5 30	Hochelaga.		8 00	1 00
11 30		Huntingdon.		6 00	2 15
10 00	5 30	Lacluse.		6 00	2 00
10 30	3 00	Laprairie.		7 00	2 00
10 30		Longueuil.		6 00	2 15
10 00		New Glasgow, St. Sophie, by Occidental Railway Branch.		1 45	
10 00		Longue Pointe, Pointe-aux-Trem. & Charlemagne.		8 00	4 30
8 30	2 30	Point St. Charles.		2 00	
11 30		St. Onogene.		6 00	1 15
10 00		St. Lambert.			
	1 30	St. Laurent, St. Martin & St. Eustache.		7 00	2 15
11 30	5 30	Tanner's West (St. Henri de M.).		6 00	
10 00		Sault-au-Recollet & Post Vian (also Bongie).		2 00	
10 00	6 55	St. Jean Baptiste Village, Mile-End & Coteau St. Louis.		7 00	3 30
				11 45	3 30
		UNITED STATES.			
8 9 40		Boston & New England States, except Maine.		7 00	
8 8 40		New York and Southern States.		6 00	5 40
8 00	12 30	Island Pond, Portland & Maine.		2 15	5 40
8 8 40		(A) Western & Pacific States.		8 15	2 30
					8 00
		GREAT BRITAIN, &c.			
		By Canadian Line on Thursday			7 00
		By Canadian Line for Germany on Thursday			7 00
		By Cunard on Monday			2 15
		Do. Supplementary, 11th and 25th December.			
		By Packet from New York for England, on Wednesday.			2 15
		By Hamburg American Packet to Germany, Wednesday.			2 15
		By White Star and Isman Lines 14th and 28th April.			2 15

(A) Postal Car Bags open till 8.45 a.m., and 9.15 p.m.  
(B) Do 9.00 p.m.

Mail for St. Thomas, W.I. Brazil, Argentine Republic and Montevideo will be despatched from Halifax N.S., once a month—date uncertain.

## Mails leave New York by Steamer:

For Bahama Islands, April 12th.  
" Bermuda, April 6th, 13th, 20th and 27th.  
" Brazil, April 5th and 11th.  
" Cuba and Porto Rico, April 8th and 22nd.  
" Cuba, Porto Rico & Mexico, April 6th, 20th & 27th.  
" Cuba and W. I. via Havana, April 15th and 29th.  
" Santiago and Cienfuegos, Cuba, April 25th.  
" South Pacific and Central American Ports, April 1th, 20th and 29th.  
" Windward Islands, April 5th and 29th.  
" Venezuela and Curacao, April 15th.

## Mails leave San Francisco:

For Australia and Sandwich Islands, April 8th.  
For China and Japan, April 19th.

## THE COOK'S FRIEND

## BAKING POWDER

Has become a HOUSEHOLD WORD in the land, and is a HOUSEHOLD NECESSITY

in every family where Economy and Health are studied. It is used for raising all kinds of Bread, Rolls, Pancakes, Griddle Cakes, &c., &c., and a small quantity used in Pie Crust, Puddings, or other Pastry, will save half the usual shortening, and make the food more digestible.

## THE COOK'S FRIEND

SAVES TIME. IT SAVES TEMPER. IT SAVES MONEY.

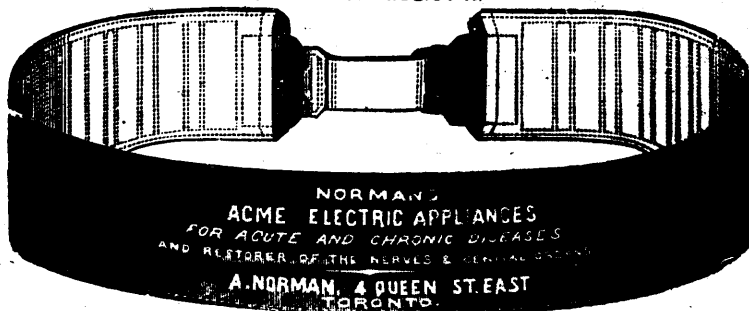
For sale by storekeepers throughout the Dominion and wholesale by the manufacturer.

W. D. McLAREN, UNION MILLS,

27-32-362 College Street.

## NORMAN'S ELECTRO-CURATIVE BELT INSTITUTION.

(ESTABLISHED 1874.)



A. NORMAN, Electrician.

4 QUEEN STREET EAST, TORONTO, ONT.

CONSULTATION FREE. Large Circulars, with Testimonials, may be had on application.

## LEA &amp; PERRINS' SAUCE



In consequence of Imitations of THE WORCESTERSHIRE SAUCE which are calculated to deceive the Public, Lea and Perrins have to request that Purchasers see that the Label on every bottle bears their Signature thus—

Lea &amp; Perrins

without which no bottle of the original WORCESTERSHIRE SAUCE is genuine.

Ask for LEA and PERRINS' Sauce, and see Name on Wrapper, Label, Bottle and Stopper. Wholesale and for Export by the Proprietors, Worcester; Crosse and Blackwell, London, &c., &c.; and by Grocers and Oilmen throughout the World.

To be obtained of MESSRS J. M. DOUGLASS & CO., MONTREAL; MESSRS. URQUHART & CO., MONTREAL.

## CANADIAN PACIFIC RAILWAY CO.

The CANADIAN PACIFIC RAILWAY COMPANY offer lands in the FERTILE BELT of Manitoba and the North-west Territory for sale at

\$2.50 PER ACRE.

Payment to be made one-sixth at time of purchase, and the balance in five annual instalments, with interest at six per cent.

A REBATE OF \$1.25 PER ACRE

being allowed on certain conditions, for cultivation and other improvements.

## THE LAND GRANT BONDS

of the Company, which can be procured at all the Agencies of the Bank of Montreal, and other Banking Institutions throughout the country, will be

RECEIVED AT TEN PER CENT. PREMIUM

on their par value, with interest accrued, on account of and in payment of the purchase money, thus further reducing the price of the land to the purchaser.

Special arrangements made with Emigration and Land Companies. For full particulars apply to the Company's Land Commissioner, JOHN McTAVISH, Winnipeg, or to the undersigned.

By order of the Board,

CHARLES DRINKWATER, Secretary.

Montreal, Dec. 1st, 1881.

## Cadbury's COCOA ESSENCE.

PURE, SOLUBLE, REFRESHING.

It is often asked, "Why does my doctor recommend Cadbury's Cocoa Essence?" The reason is that being absolutely genuine, and concentrated by the removal of the superfluous fat, it contains FOUR TIMES the AMOUNT OF NITROGENOUS or FLKSH-FORMING CONSTITUENTS of the average of other Cocoa which are mixed with sugar and starch. Beware of imitations, which are often pushed by shopkeepers for the sake of profit.