

MUNICIPAL ENGINEERS, CONTRACTORS, AND MATERIALS.

J. M. SHANLY
 M. CAN. SOC. C. E. M. AM. SOC. C. E.
CIVIL ENGINEER.
 STANDARD BUILDING MONTREAL
 Surveys, Plans, Estimates, &c., for Water Works,
 Sewerage, Water power projects, Bridges, Railways, &c.
 . . . CONSTRUCTION SUPERINTENDED . . .

WILLIS CHIPMAN, B. A. Sc.,
 M. Can. Soc. C. E.; M. Am. Soc. C. E.;
 M. Am. W. W. Ass'n.
CIVIL AND SANITARY ENGINEER
Water Works - Sewerage
Sewage Disposal
 103 BAY STREET - TORONTO.

J. McDOUGALL, C. E.,
 ENGINEER OF THE COUNTY OF YORK
GENERAL MUNICIPAL ENGINEER
 Consulting Engineer for Municipalities in regard to
 Electric Railway and other Franchises.
 Specialties: Bridges, Foundations, Electric Railways,
 and Roads. Surveys made; Plans, Specifications and
 Agreements prepared, and work superintended.
COURT HOUSE, - TORONTO.

JOHN D. EVANS, O.L.S.
 MEM. CAN. SOC. C. E.
LAND SURVEYOR
 Civil Engineer : Architect
 and Patent Solicitor.
 Special attention given to Consulting and
 Municipal Work.
 GRASS' BLOCK, FRONT ST., TRENTON, ONT

JOHN GALT
 C. E. AND M. E., M. CAN. SOC. C. E.,
Consulting Engineer.
 20 Years' Practical Experience in England, United
 States and Canada in Civil, Sanitary, Hydraulic,
 and Mechanical Engineering.
SPECIALTIES
 Waterworks, Sewerage, Electric Railways.
 Office: Rooms 99 and 100,
 CANADA LIFE BUILDING, - TORONTO.

ALAN MACDOUGALL
 M. Can. Soc. C. E. M. Inst. C. E.
CIVIL AND SANITARY ENGINEER
 32 East Adelaide St. - TORONTO

SURVEYS AND ESTIMATES PREPARED for all
 classes of municipal work, water-powers, road
 improvement. Construction superintended.

Fire Bricks and Cement
 DRAIN AND WATER PIPES
 SANITARY EARTHENWARE
 LONDON PORTLAND CEMENT
 GUARANTEED GENUINE.
 Paving and Scoria Bricks for Stables,
 Sidewalks, Yards, etc.
 Large quantities on hand and to arrive. We handle
 only the best quality. Prices lower than ever.

F. HYDE & CO.
 31 Wellington Street, - MONTREAL,
 Sole Agents for
**THE "GRANTRYX" SMOKE TEST AND
 DISINFECTING MACHINE.**

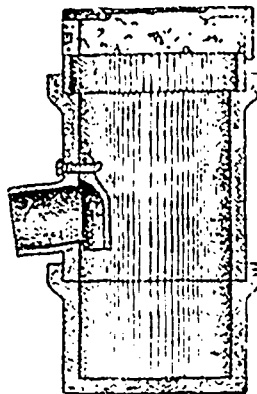
MUNICIPAL OFFICIALS should see to it that in the erection of town and city PUBLIC BUILDINGS, the installation of water works plant, etc., the advantages of . . .
MINERAL WOOL



are made use of for deadening sound in floors and partitions, insulation of heat and cold, fireproofing,
 etc., also SECTIONAL MINERAL WOOL COVERING for steam pipes, boilers, exposed water
 pipes, etc.
CANADIAN MINERAL WOOL CO., Limited, 122 BAY ST., TORONTO
 Montreal Agent: LEWIS SKAIFE 707 NEW YORK LIFE BUILDING

E. D. MORRIS
 Direct Importer and Dealer in
 Best English and Canadian
PORTLAND CEMENTS
Vitrified, Paving and Fire Bricks,
Fire Clay, &c.
 Offices: 8 Market St. - TORONTO

**THE "IMPROVED"
 ST. GEORGE CULLEY**
 OR STREET DRAINING WELL.



PATENTED 1885
 AND 1893.
 Made of cast iron
 and vitrified tile.
**OVER 6,000 NOW
 . . . IN USE.**
 Not ONE com-
 plaint.
 For further par-
 ticulars, apply.

LEWIS SKAIFE, Manager
 New York Life Building - MONTREAL.

Drummond McCall Pipe Foundry Company,
MONTREAL
 MANUFACTURERS OF
CAST IRON WATER AND GAS PIPES
 WORKS: LACHINE, QUE. PRICES ON APPLICATION.

CANADA PIPE AND FOUNDRY CO. . . .
 MANUFACTURERS OF
Cast Iron Pipes and Special Castings
 Works: MONTREAL AND ST. HENRI, QUE.
 CORRESPONDENCE SOLICITED.

HAMILTON AND TORONTO SEWER PIPE CO.
 - FOR -
**SEWERS,
 CULVERTS,
 AND
 WATER PIPES.
 INVERTS**
 Fire Brick Sewers
Write for Descriptive
 HEAD OFFICE AND FACTORY: HAMILTON, CANADA.



STEAM AND POWER

FOR ALL DUTIES

Pumps
 & HYDRAULIC
 MACHINERY

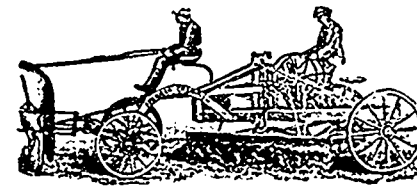
**NORTHEY CO.
 LTD.**
 Toronto
 Ont.

**Artificial . . .
 Granite Stone
 . . Pavements**
 . . . FOR . . .
 STREETS, SIDEWALKS, BASEMENT
 FLOORS, ETC.

The attention of municipalities and others inter-
 ested is called to the excellence of this material.
A. GRAHAM
 Sole Proprietor and Patentee
 226 Picadilly St., - LONDON, ONT.

Municipal Officers, Contractors and others are
 requested to mention the CONTRACT RECORD
 when corresponding with advertisers.

THE COPP BROS. CO., (LIMITED)
 The only Manufacturers in Canada and Sole Owners
 of the Canadian Patents of the American
**CHAMPION ROAD MACHINES
 CHAMPION ROCK CRUSHER
 CHAMPION SGEEL ROAD ROLLER**
 Catalogues Free. Correspondence Solicited
 ADDRESS: COPP BROS. CO. - HAMILTON, ONT.



THE STANDARD DRAIN PIPE CO.
 OF ST. JOHNS, P. Q., (LIM.)

**Standard
 SALT GLAZED FIRE CLAY
 SEWER PIPE.**

Manufacturers of
 Salt-Glazed
 Vitrified
**SEWER
 PIPES**
 Double Strength
 Railway Cul-
 vert Pipes,
 Inverts, Vents.

AND ALL KINDS OF FIRE CLAY GOODS.

THE G. & J. BROWN MFG. CO.
 Railway and Contractors' Plant.
BRIDGE BUILDERS
 BELLEVILLE, ONT.