

A. B. C. & A. 1 Codes Used.

Telegraphic Address, Latch, Haymills

LATCH & BATCHELOR, L^td.

AMALGAMATED WITH
WEBSTER & HORSFALL,
(ESTABLISHED 1730.)

Works : HAYMILLS, BIRMINGHAM, ENGLAND.

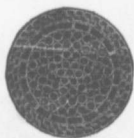
AGENT: H. M. WYLDE, P O Box, 529 HALIFAX N. S.

Patentees and Manufacturers of

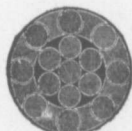
Locked Coil and Flattened Strand WIRE ROPES.

Manufacturers of all Kinds of WIRE ROPES for

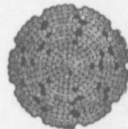
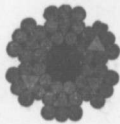
Mines, Tramways, Aerial Ropeways, Suspension
Bridges, Cranes, Elevators, Transmission of
Power, Steam Ploughing and General
Engineering Purposes.



Locked Coil Winding Cable.



Locked Co'l Aerial Cable or Colliery Guide.



Lang's Lay or ordinary Patent Flattened Strand Winding or Hauling. Patent Flattened Strand, (non spinning)

DRAWERS OF all Sections **STEEL-WIRE.**
HIGH CLASS
for Ropes, Springs, Pianos, Needles, Fish-Hooks
Binding Armatures and all other Purposes.