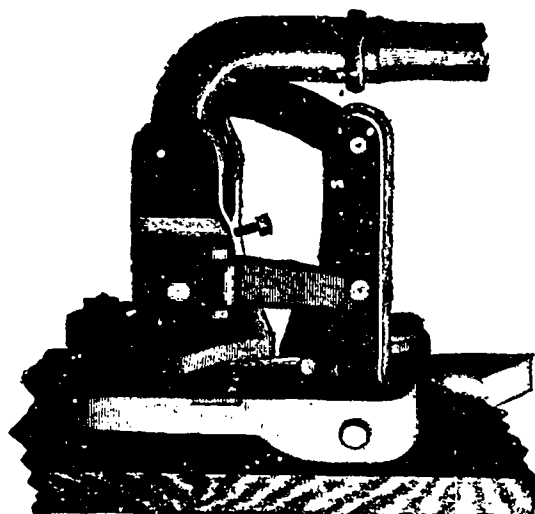


THE WM. HAMILTON MANUFACTURING CO'Y LIMITED.

Peterborough, - Ontario

Manufacturers of Saw Mill and General Machinery.



(EXTERIOR VIEW)

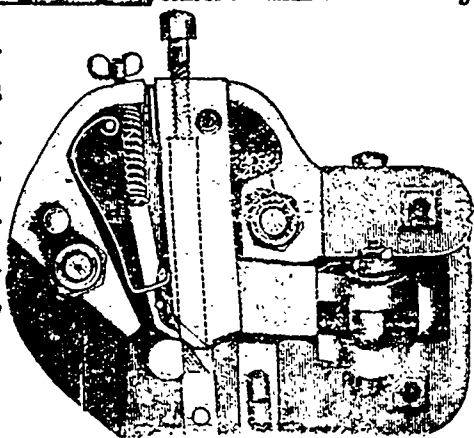
IMPROVED PRESSURE SWAGE

This SWAGE has been constructed to fill any conceivable wish of those who are favourable to, and think it the only

kind that can be successfully used. There is no Swage of the kind on the market that will do as perfect and satisfactory work as this, and in so saying, I know what I am talking about.

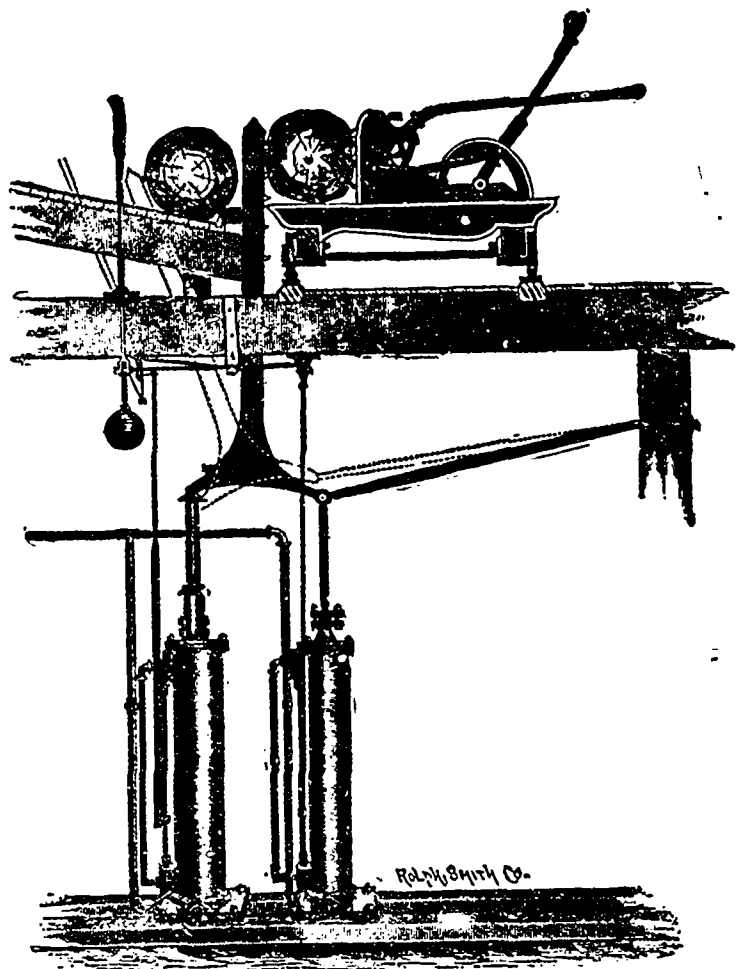
TRY IT!

Price \$100, Cash 30 days.



(INTERIOR VIEW)

THE KALAMAZOO STEAM "NIGGER"

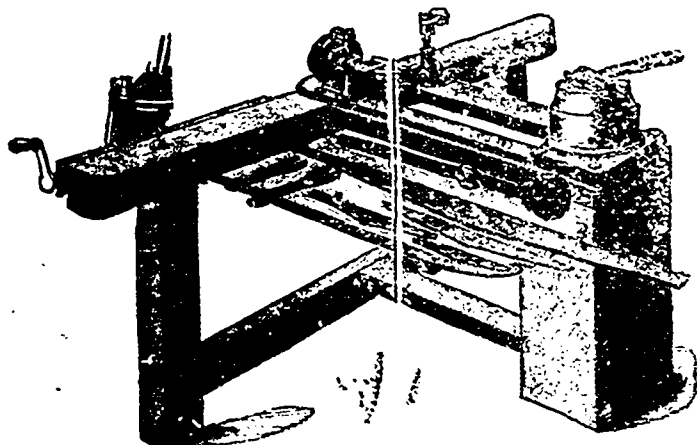


Ralph Smith Co.

It is four machines in one—Log Loader, Log Turner, Hand Spiking Machine, and Machine for Springing Timber Straight on Sawmill Carriages. It saves time, which is money. Is durable, being made entirely of iron, steel and brass. It is very quickly and easily controlled, the machine being worked by direct steam, is elastic in its movements (thereby obviating its liability to breakage) which is a very desirable point in a machine. By using this machine your circular mill will saw from five to seven thousand feet more per each eleven hours, according to cutting capacity of mill. We guarantee this machine to be first-class in workmanship, durability and utility. It has given entire satisfaction to every one using it. They are very cheaply set up in mill requiring only a base for the cylinders on lower floor, and no bridge-trees shafting, boxes, pulleys, belts or chains. Both cylinders are supplied with steam by a one and a half inch steam pipe. It requires less steam to work it than it takes to overcome the friction on the old style friction turners. It works only while turning or loading logs—balance of time it is entirely idle. Another important use to which we direct your notice, is in springing and straightening long timbers. We would be pleased to receive your order for one or more of the above Machines, feeling confident that it will give you entire satisfaction.

Covel's Improved Saw Bench

Price \$50, Cash 30 Days.



Price \$50, Cash 30 Days.

This is without doubt, from my knowledge of what is wanted in every mill, together with the many testimonials I have received from those using them, the best outfit for hammering and the general care of Saws, that has ever been introduced, and accompanying each Bench is my "Handy Guide" book, giving all necessary instructions how to remedy any or all defects in the Saw. I have added improvements to it since I got the cuts out represented in the "Handy Guide" and done away with some parts there represented, leaving the Bench a model acquisition for the File Room.

We Guarantee each Machine in every Particular.