

usive
Millinery

Wm. Foreman & Co.

Household
Linen

WASH COLLARS AND BELTS—You'll be delighted with this store's showing of Wash Collars and Belts at each 25c. See the stylish Roman striped silk, also the new Leather Belts for summer wear, the next time you are down town.

HIGH-CLASS WASH FABRICS MOSTLY WHITE

Opportunity comes with such suddenness that only they who are prepared for it may seize it. This has been a season of dull and prolonged cold weather, but notwithstanding the coolness of the season we have bought, and we have here more wash goods, better wash goods and more exclusive wash goods than ever before.

When the warm balmy weather suddenly bursts upon us you appreciate the store with the stock of warm weather goods. See our Window Display of Wash Fabrics, Embroideries and Laces this week.

Beautiful Dotted Swisses, at per yard, 12 1-2c, 15c, 20c, 25c, 30c, 35c, 45c, 50c, 55c and 60c.

White and a L'ens, extra qualities, at per yard, 12 1-2c, 15c, 18c, 20c, 22c, 25c, 30c, 35c, 37 1-2c and 40c.

White Tussine Lawns at per yd., 25c.

White Wash Organdies, very popular this season for fine dresses, at per yard, 22c, 25c, 30c, 35c, 40c and 45c.

White Mercerized Batistes, sheer and beautiful for fine dresses, at per yard, 35c, 45c, and 50c.

Mercerized Batistes, in white, in exclusive designs, for summer dresses and waists, at per yard, 50c.

White Sheer Mercerized Waists, in exclusive designs, at per yd., 15c, 20c, 25c, 30c and 35c.

Beautiful White Sheer and Melton Weights in a l'pre linen for summer gowns and suits, at per yard, 40c, 50c and 60c.

Wm. Foreman & Co.

DON'T BE CUT TO PIECES!

MEN AND WOMEN—We guarantee to cure tumors, Goiters, Strictures, Varicocele and Piles without the knife. Don't be cut to pieces when there is a better way. We have no hobby and make no effort to cure diseases by any PET method. We use all modern methods, such as electricity, X-Ray Light, Leucodermat Light, Mechanical Vibration,

Massage, Hot Air Baths, Specific Medicines, and any and everything that tends to facilitate a cure. We treat and cure most chronic ailments.

An experience of 26 years enables us to tell at once whether your case is curable. If we cannot cure you we will frankly tell you so.

Office hours—9 to 4, and 6.30 to 8. Sundays and holidays—11 to 1.

DR. WESLEY ROBBINS SPECIALIST

Over 208 Woodward Avenue, Detroit. Entrance 3 and 7 Wilcox Street.

BURROWS & SONS,
UNDERTAKERS AND
EMBALMERS
OPPOSITE POST OFFICE, OPEN DAY
AND NIGHT.
Telephone No. 408.

DR. A. A. HICKS
...DENTIST...
OFFICE: 26 KING STREET WEST
OVER TURNER'S DRUG STORE
PHONE 33

Dr. Neil Smith
...DENTIST...
Office over A. J. McCall & Co's Drug Store
Cor. King and Fifth Sts.
Phone 164.

Chatham's Nicest Store | H. W. Ball & Co. | Chatham's Nicest Store

H. W. BALL & CO.'S Coats, Skirts and Suits

Big Selling the past few days on our Cloak Room Floor. The biggest values you could find anywhere.

Five Thousand Dollars Worth

Of Women's Suits. Coats for Women and Girls. Skirts for Women and Girls. Bought at 50c on the dollar. Only one of a kind in most of the garments. Every one made for this season.

Come on in, if only to look, buy if you want.

We feature two lines of Special Priced Garments
60 Lovely Coats **130 Skirts**

Made of Fawn Covert Cloths and Tweeds, light and dark. The cloths are good qualities, the tailoring is the best—none better no matter what you would pay, all sizes for women, also a few nice ones for misses—these coats are worth up to \$12.00, while they last

\$5.00

Made of tweeds, plain cloths, lustrous, mohairs and Panama, strictly up-to-date in every detail. These Skirts were bought from one of the best manufacturers at 50c on the dollar. Some of the Skirts are worth as much as \$10, while they last

\$3.50

Quite a number of Suits have been sold, don't delay getting your choice. Some special values. You will be sorry if you miss.

H. W. Ball & Co., King Street, Chatham

THE STAGE

ANNOUNCEMENTS.

(Supplied to The Planet by Press Agents.)

At the Brisco Theatre—
Uncle Josh Spruceby—May 29.
East Lynne—May 31.

"UNCLE JOSH SPRUCEBY."
(TO-NIGHT.)

The theatre-going public will hail with delight the good news that our old friend, "Uncle Josh Spruceby," is to visit us this evening at the Brisco Theatre. This company, which has made an exceptionally strong impression wherever it has appeared, has many friends here who will await their coming with interest. The organization this year is better than ever, all the old favorites being retained and capable new ones added, and now takes rank with the best dramatic companies touring the country. The play is one of those homely New England dramas with a beautiful story running through it. Comedy, sensation and pathos abound. Attention has been paid to detail and a full new set of scenery has been painted for this season. Undoubtedly a big crowd will attend to welcome "Sally," "Dutey," "Out o' Sight," the Hayseed Band, and "Uncle Josh" himself. No theatrical season is complete without the joy afforded by "Uncle Josh" and his fellow "Rebblers." The elegant orchestra so long a feature of this company is still retained and, as usual, is still a source of delight.

JOSEPH KING'S "EAST LYNNE." Local theatre patrons will be afforded an opportunity next Friday night, at the Brisco Opera House, of witnessing a highly artistic and enjoyable presentation of the great set emotional drama, "East Lynne," by Joseph King's New York company.

The intense scene in which the unfortunate heroine's child breathes its last is the supreme dramatic moment of the play. The performance throughout is maintained at a high standard of artistic excellence. Nothing has been left undone in the way of scenic aids and accessories and competent stage direction will insure a harmonious performance.

MR. THOMAS SCULLARD WAS APPOINTED

Tilbury, May 28.—The town have appointed W. A. Burke, of the Canada General Electric Company, Toronto, as their arbitrator in the matter of fixing the value of the electric light plant to be taken over by the corporation from D. W. Kett, has appointed Thomas Scullard, barrister, of Chatham, as his arbitrator. The two arbitrators will meet in the near future, appoint a third arbitrator, and get down to business. The decision of any two of the three will be final.

WALLACEBURG MAN ATTEMPTS SUICIDE

Wallaceburg, May 28.—Thomas Murphy, a glass blower, of this place, attempted to drown himself about a quarter to four o'clock this afternoon. Mr. Wm. Riddell, who was standing near the Empire Hotel at the time, saw Murphy throw off his hat on the dock and then jump off the dock immediately in the rear of the hotel.

Had it not been for the timely assistance of Mr. Riddell and some others, the man would have drowned. Mr. Riddell grabbed him by the neck and called for help. The man was placed on the dock and afterwards taken to Samuel Taylor's livery barn.

Good counsel never comes too late.

Jahnke & Hinnegan
Funeral Directors and
Embalmers
King St. East, four doors east of Market
Latest Appliances
Open Day and Night Phone 14

A BIG STRIKE IN TILBURY OIL FIELD

Tilbury, May 28.—The Amalgamated Oil Company, in which London men are largely interested, has struck another big oil well on the John H. Cooper farm, Tilbury East. The well started flowing natural over 100 barrels a day. This is the third well on the property and they are all gone over.

The Amalgamated is practically the only Canadian firm that is operating in the field and they are among the biggest producers.

They have secured a large acreage and purpose doing a great deal of development during the present season.

Large quantities of fish are dead in the ditches and creeks that run from the shallow oil field, there being so much oil in the water that the fish are unable to live in it.

C.C.C.C.

The best Sewing Machines on the market, latest and up-to-date. Needles, Oils, Machines to rent. Pianos, Organs, Edison Records and Phonographs, all on easy terms and prices.

TYRRELL'S MUSIC STORE King St W Chatham



THE INSTRUCTOR SHOE

"The only Child's Shoe made in Natural Shapes of Solid Leather."

The way your children's shoes wear out often surprise you. They seem to fall to pieces, or the soles wear out as if they had been held to a grindstone.

Instructor Shoes Are made from the very best leather and are put together by high class skilled labor. The Instructor Shoe is built on lasts modelled from children's feet. The shape permits the foot to lie perfectly flat—each toe out straight—growing as nature intended. One pair will outwear two ordinary pairs.

A Full Line in Stock

**GEO. W.
COWAN**

A FEW WORDS ABOUT

..REX FLINTKOTE ROOFING..

THE basis of this Roofing is a selected long fibre wool felt saturated with a carefully prepared non-combustible compound rolled under a pressure of 30,000 pounds. There is not a particle of paper or tar used in its manufacture. We guarantee it to be absolutely water and wind proof and practically fire proof. It is light, warm, and will last a lifetime if painted once in six years. Rex Flintkote has been on the market for upwards of 30 years, and is, therefore, no experiment.

We recommend it for all kinds of buildings.

Put up two square in a roll with everything necessary to put it on with.

One-ply - - - - \$2.60 per square
Two-ply - - - - 3.75 per square

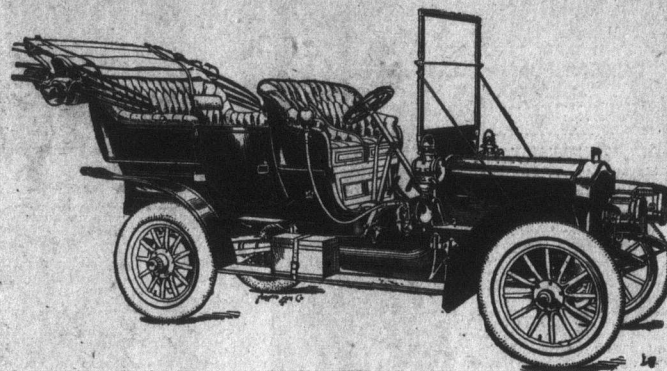
George Stephens Phone 6 D. H. Douglas

THERE IS A SAYING—

If You Have a Good Thing Push It Along!

WE HAVE THREE GOOD THINGS—

But you do not need to push them along. They run along themselves, and run a long time, growing in the owners' estimation.



"RUSSELL" CARS ARE GREAT CARS

It is a great source of satisfaction to the owner that, behind the RUSSELL is a factory, always near enough to look after him, and always determined to please him.

RUSSELL MODEL D has a two-cylinder motor of 18 h.p. under the bonnet in front, with shaft drive, metal disc clutch, selective sliding gear transmission, nickel steel in all gears and shafts, positive lubricating and circulating systems, and powerful double sets of brakes on the rear wheels. Handsome, roomy and comfortable. \$1600.00.

RUSSELL MODEL E—A powerful roomy car of handsome lines and exquisite finish, has a four-cylinder 25 h.p. motor. This model is particularly quiet and flexible in operation. \$2,500.

RUSSELL MODEL F—A high-powered car of the luxurious type, with capacity for seven passengers—has a 40 h.p. engine—pressed chrome steel frame and general appointments of the strongest and most expensive type. \$3,750.

WRITE FOR CATALOGUE AND BOOKLETS FROM SATISFIED OWNERS.

CANADA CYCLE & MOTOR CO., LTD.

TORONTO JUNCTION,

CANADA.

BRANCHES:

OTTAWA, WINNIPEG, VANCOUVER, MELBOURNE, AUS.

Extra Special Sale This Week.

BARGAINS AT THE

NEW YORK CLOAK STORE

King Street, Chatham.

Folks come here not to admire and pass along but to admire and buy, so attractive are the useful and seasonable goods.

Ladies—See our Window Display of Beautiful White Wear Specialty. On Sale This Week—Special Ladies' Suits, made of fine lawn, Ladies' Waists, Underskirts, Corset Covers, Night Gowns, Vest Belts and Collars.

Beautiful White Lawn Suits, trimmed with lace tucks and insertion, from \$3.50 to \$7.50. A large assortment of Ladies' Lawn and Organdie Waists, trimmed with tucks and insertion, from 45c up to \$3.

Ladies' White Pique Skirts and Linen Skirts, 9-gored plaited skirts, folds and insertion, from \$1.65 to \$2.50. Skirts sold at actual Half Value.

Ladies', Misses', and Children's Hose, all colors and all sizes, reg. 15c., to be sold at 2 for 25c.

M. SHAPERO, King Street,

JAMES B. WATSON & CO.,

BROKERS AND GENERAL AGENTS

Office 45 Queen Street, - - - - - Ottawa, Ont.
Chatham Office, Rispin Block, - - - - - King Street

J. P. DICKSON,
Manager, Chatham Branch

COBALT AND OTHER STOCKS BOUGHT AND SOLD

CLOTHES CLEANED PRESSED & REPAIRED

At Lowest Prices

We carry a large range of Suitings, and guarantee a perfect fit.

JAS. E. GOODALL,
TAILOR
5th St.—Over the Bridge next the Laundry

Blake Bros.,

PAPER HANGERS
DECORATORS
AND PAINTERS

Estimates promptly furnished for House Painting.

Shop: Queen St., 4th door South of G. P. R. Track, Queen St.
Or address Chatham P. O.