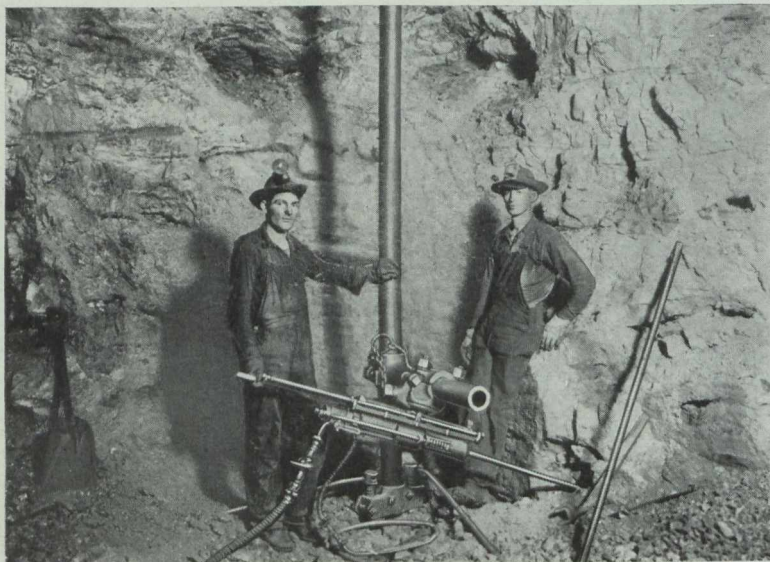


Sullivan "DR6" Hammer Drills Have Made Good at Joplin



The Joplin District—in southwest Missouri and northeast Oklahoma—contains drilling conditions of great difficulty :—hard, tough flint and chert, seams, pockets, soft ore, in which drilling is slow at best, and repairs apt to be costly.

SULLIVAN "DR6" DRILLS

under these conditions, are drilling the flat, deep stope holes—the hardest work done—faster and at lower cost for repairs than any other drills in use. Reasons for DR-6 supremacy in this field include :

1. **HARD BLOW.**
2. **POWERFUL ROTATION.**
3. **AIR AND WATER JET, which expels the cuttings from the drill-hole.**
4. **DROP FORGED OR BAR-STEEL CONSTRUCTION THROUGH-OUT.**

LOW STEEL BREAKAGE, CONVENIENCE IN OPERATION and FREEDOM FROM THE DUST NUISANCE are other reasons for DR-6 popularity at Joplin. ONE COMPANY ALONE has more than a hundred DR-6s in use.

If the "DR6" can make good at Joplin, don't you think
it's worth a trial at YOUR mine? ASK FOR
THE BULLETIN, No. 670-C.

SULLIVAN MACHINERY COMPANY

122 So. Michigan Ave., Chicago, U.S.A.

Boston, Mass.
Butte, Mont.
Cobalt, Ont.

Ishpeming, Mich.
Juneau
London

Nelson, B.C.
New York
Paris, France

San Francisco
Spokane
Sydney, N.S.W.

Toronto
Vancouver, B.C.