

WARTS ON TEATS.

I have a heifer coming three year old which I expect soon to calf. Her teats have a great number of warts all in clusters on them, which will make her very awkward to milk. Could you give me any remedy which would be likely to cure the warts.

J. H. S.

Ans.—Warts on teats are often very troublesome to treat. Any that have a neck sufficiently long to permit of a strong piece of string or silk, being passed around, should be tied very tightly, when the growths will usually slough off in a few days. Those with a flat or broad base should be painted with Fowler's solution of arsenic morning and evening (after milking, if the cow is milking). A tablespoonful of the same medicine should be given in drinking water or mash morning and evening. If this treatment fails, clip them off with a pair of sharp scissors and cauterise the raw surface with nitrate of silver. We have also had success by touching the warts every other day with pure carbolic acid.

THE PRE-EMPTION LAW.

Would you be so kind as to publish the new pre-emption law?

Harding, Man.

G. W. W.

Ans.—A full copy of the act may be obtained from the department of the Interior, Ottawa, but we publish below the main features of the act. It will be noticed that applications for pre-emptions may be made on or after September 1st next, and that the pre-empted area is the southern part of western Saskatchewan and eastern Alberta.

Pre-emptions may be taken on either odd or even numbered sections south of township 45, east of the Calgary and Edmonton railway and the west line of range 26, and west of the third meridian and the Soo Railway line, but townships within that area in which a railway company has selected eight sections of its land grant are excluded from the pre-emption privilege.

Persons entitled to a pre-emption entry holding homesteads within townships in which pre-emptions may be taken, and alongside whose homestead there is a quarter section available as a pre-emption, are entitled, if the first applicant, to enter for such quarter section as a pre-emption on or after September 1st next.

If such homesteader, whose entry must be in good standing, notifies in writing over his own signature, or by telegraph from a Sub Land Agent, the Agent of the Land District in which his homestead is situated, before September 1st, that he desires to pre-empt an available quarter section lying alongside his homestead, or separated from it by only a road allowance, the Land Agent shall hold such quarter section reserved from homestead entry, and for pre-emption entry only, until the end of September 15th, but no longer.

If more than one homestead adjoins a quarter section available for entry as a pre-emption in connection with such homestead, and if notice has been given as above provided, that one of the homesteaders desires it as a pre-emption, the pre-emption entry for such quarter section shall not be granted until the Agent has decided which homesteader has the first right to the pre-emption entry.

The Agent shall decide on or before September 15th which of the homesteaders has first right to the pre-emption under Sub-section 6 of Section 27 of the Dominion Lands Act, which provides that the homesteader in good standing who holds the first entry for his homestead has the first right to the pre-emption, and the Agent shall give the pre-emption entry accordingly.

A homesteader who holds entry in a township which is not available for pre-emption, if there lies alongside his homestead in an adjoining township available for pre-emption an available quarter section, may pre-empt such quarter section.

Index maps showing the pre-emption tract and the townships not available for pre-emption are available for free distribution at all land agencies in Manitoba, Saskatchewan and Alberta.

OPEN SEASON

What is the open season for hunting deer, prairie chicken and ducks in Manitoba?

J. T. S.

Man.

Ans.—Deer, from the 1st to 15th December. Grouse, prairie chicken or partridge, from 15th to 31st October. Ducks, from September 1st to November 30th. Non-residents must procure a license from the Minister of Agriculture & Immigration, entitling them to hunt, shoot at, kill, wound or destroy any animal or bird mentioned in "The Manitoba Game Protection Act," or any other bird or animal, whether protected by Act or not, and avoid any unpleasantness or risk of being prosecuted.

CALF CHOKES—OBSTRUCTION IN MILK DUCT.

1. Calf eats well and looks well, but after drinking a few mouthfuls it chokes and coughs and the milk runs from its mouth.

2. Heifer had lump in teat last year, but it did little harm. This year there appears to be an obstruction about the center of the teat, and the milk comes in a very small stream. If allowed to go dry will she give as much milk out of the other three as she should from four teats?

V. M. C.

Ans.—1. The calf drinks too greedily. There is probably a constriction in the gullet which might be dilated by passing a probang, but treatment is seldom successful. Give the milk out of a wide, shallow vessel, which will force it to drink slowly. As it can eat all right it may gradually get better. If it does not improve in a few weeks, I would advise you to send it to a butcher.

2. This is a fibrous growth in the milk duct. An operation by a veterinarian, with an instrument especially designed for the purpose, effects a cure in many cases until next calving, when the trouble may recur. She will not give a normal quantity of milk with one quarter dry. I would advise you not to breed her again. Her heifer calves will be predisposed to the same trouble.

V.

PLEURO-PNEUMONIA

Large and very fat colt, whose dam was worked some, became sick on Monday morning. It was dull, breathed heavily; its temperature 105 degrees. It would not nurse, but would drink large quantities of water. We treated it, but it died on Sunday morning. A post-mortem revealed a paillful of yellowish fluid in the lung cavity, and about half-inch of yellowish stuff about the heart. What was the disease?

J. B.

Ans.—The foal had pleuro-pneumonia (inflammation of the pleura and lungs). It is very seldom a cure can be effected in such complications.

V.

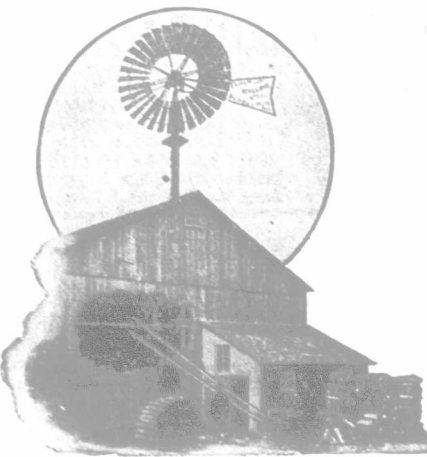
FEEDING FLAX

How should flax be fed to milch cows and to oxen?

T. S. T.

Ans.—At the Iowa Experiment Station flaxseed was fed to cows and oxen at the rate of eight pounds per head daily, and no bad results followed this heavy feeding. But we do not approve of such excessive feeding of this seed, and believe it should be fed in limited quantities only. Good results follow when two pounds per head daily of the ground seed is fed, mixed with the usual grain and bran ration. Flaxseed contains a cathartic principle, for this reason it should not be fed in large quantities, besides the food ingredients in it may be supplied cheaper in some other grain. Flax is a high-priced grain, and while a little is very beneficial, it is too expensive to feed very liberally.

Owing to its exclusive devices, such as the melodant, the phrasing lever, the melody button and the diaphragm pneumatics, the Goulay-Angelus piano plays with all the individuality and authority of a virtuoso. It was the first on the scene, and from its marked superiority it is still entitled to the last word.



\$====100====\$

Is all we ask for a

Star Windmill

GUARANTEED FIRST-CLASS OR MONEY REFUNDED

Caters Wood and Iron Pumps, made specially for the West at reasonable prices. Aermotor repairs kept in stock. Catalog free. Address

Brandon Pump & Windmill Works

Dept. A.

BRANDON, MAN.

Harrow While Plow
Make one job out of the two, and get your ground in finest condition by harrowing when the soil is first turned up.
Kramer's Rotary Harrow Plow Attachment
Attaches to any gang or sulky and levels, pulverizes and makes a mulch of the "moist soil" that is not possible after the ground dries and "sets." Draft only slightly heavier—you'll be surprised to see how little. A great time and labor saver. Quick Canadian Shipments. Stock now carried at Winnipeg, Regina and Calgary. No Custom House or other delays. Write for catalog No. 4.
THE E. M. KRAMER CO., Paxton, Illinois

VALUABLE PREMIUMS FREE

YOU will be surprised how easy it is to earn one or all of these valuable premiums if you will only make the attempt. You no doubt read the

FARMER'S ADVOCATE AND HOME JOURNAL

regularly and know what a valuable paper it is to have in your home. Perhaps your neighbor does not take it. If he does not, point out to him that he can secure the paper every week of the year for only \$1.50. Tell him what you think of it yourself, and you will have no difficulty in securing his name.

Send us the names and money and choose your own premiums.

THE KNIFE A genuine two-bladed Joseph Rogers. Can't be purchased retail for less than \$1.00 ONE new subscriber and the knife is yours.	THE WATCHES For THREE new subscribers we will send you a nickel case, seven jewel, stem wind, Gentleman's watch. For FOUR new subscribers you can have a Lady's watch, handsomely engraved, illuminated dial—a little beauty.	THE RAZOR A Carbo-Magnetic of best steel; costs in the ordinary way \$2.50. Send us THREE new subscribers and shave with this razor.
THE ATLAS 16 full-page maps, names of cities of the world and their population, name and population of every town in Canada of over 1,000. Send us ONE new subscriber and we will mail it to you.		

To secure a Premium, subscriptions must be new ones, not renewals.

Subscription Price \$1.50 per year.

Address:

The Farmer's Advocate of Winnipeg, Limited.