

QUESTIONS AND ANSWERS.

Miscellaneous.

SEEDING TO ALFALFA.

I am desirous of seeding some land to alfalfa this spring. The piece that I think will be the best adapted to it on my farm is sown to wheat. Is it likely to be a success if I sow it there about May 1st, and harrow well after?

W. A.

Ans.—It may, possibly, do fairly well, but as a rule alfalfa is not very successfully seeded with wheat.

ALFALFA ROOTS AND DRAIN TILES.

Have been told that alfalfa roots will grow down and completely clog under-drains. As our land is drained where I am going to sow the alfalfa, and is a sandy loam, would be pleased to have your opinion.

J. E.

Ans.—Experience has indicated little or no trouble from alfalfa roots obstructing tile drains, providing the tile are clean and free from silt.

MILK PANS IN WINTER.

What is the best place to keep milk in pans in winter? Is the cellar floor too cold?

L. W.

Ans.—Milk pans can be kept in any clean, cool place, where there are no foul odors, and where the milk or cream does not freeze. In the ordinary cellar, it is not often that the floor is too cold. A temperature of 50 to 60 degrees Fahrenheit is recommended, but below 50 degrees is satisfactory. Drafts should be avoided.

STEER HAS COUGH.

I have a yearling steer, in good condition, bright and lively, except at times, when he stands with his head hanging; has a short, smothered cough (only while the spell lasts), and passes large quantities of very bloody water. The first spell was noticed in December, but they are becoming frequent. He eats well, but seems to drink very fast, taking great gulps. What is the cause, or what to do for him?

F. S. R.

Ans.—Since he is doing fairly well, it is probable that no medicinal treatment is necessary, and the cough will probably cease when he gets on the grass. A level teaspoonful of saltpetre given twice a day in feed for three or four days, will act upon the kidneys and improve the condition of the urine.

CEMENT OR PLANK SILO.

What is the cost of building a round cement silo 16 x 30 feet? Does the corn keep as well as in a plank silo?

J. D. M.

Ans.—The cost will vary with the distance you have to haul the sand, gravel and cement, provided you take into account labor for men and teams. Some men are so located that there is little expense connected with placing the sand or gravel on the spot. An approximate cost would be \$175, but you will have to figure it out for yourself, taking into consideration the convenience of materials, your chances for renting curbing, etc. Opinions differ, but it is generally agreed that corn keeps as well in a properly-constructed cement silo as in a wooden structure.

FEEDING BRAN—ECZEMA.

1. What do you consider the best way to feed a cow bran to produce the most milk, fed dry, or as a hot mash?

2. I have a cow whose hair is coming off in patches. I cannot see any vermin on her to cause it. Please let me know the cause and cure?

NEW SUBSCRIBER.

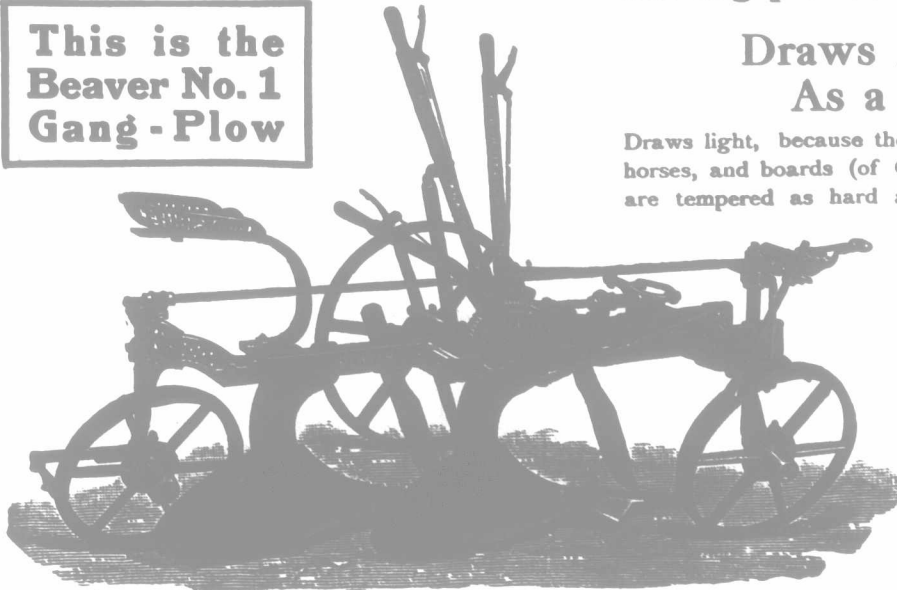
Ans.—To produce the most milk, we think the hot mash would be the most effective, though it is questionable whether sufficient to pay for the extra time involved in preparation and feeding. Experiments have proven that, as a rule, cooking food for stock has little, if any, advantage in results over feeding it in the raw state.

2. Give her a thorough washing with warm, strong soapsuds, applied with a scrubbing brush, and rub with straw wisps and cloths until dry. Then dress with a solution of corrosive sublimate, 25 grains to a quart of water. There may be small white lice present, scarcely visible to the naked eye; if so, the above solution will destroy them.

This Plow Saves You Money

Three horses and an untrained BOY can do more plowing and BETTER plowing in a day, with this gang-plow, than two skilled men and four horses, using walking plows! Think what that SAVES!

This is the
Beaver No. 1
Gang-Plow



Draws Almost As Light
As a Walking Plow

Draws light, because the draft is straight, no neck-weight on the horses, and boards (of Cockshutt Special soft-centre crucible steel) are tempered as hard as glass and polished like cutlery—they'll scour in ANY soil. Anybody who can guide a team straight can do better plowing with this gang than an expert with ordinary plows. It is THE plow for unskilled labor—once adjusted, it cannot go wrong. Little strength needed to operate levers; they are fitted with our new "helping spring," which makes the lift so easy a child can handle them readily.

Plus-Strength—
Minus-Draft

Like all the Cockshutt Line, this Gang-Plow has Plus-Strength built into it—strength to stand usage that would wreck an ordinary plow—more strength than it will probably ever need, but MAY need—strength to insure you against breakdowns in busy-time. And it has Minus-Draft designed into it—all the ways to reduce draft and friction that thirty-two years' experience in building implements for the practical farmer have taught us. You pay nothing more to get these extra-value features found ONLY in the Cockshutt Line; but you save a lot by getting them. Send to-day for illustrated details. Write direct to us.

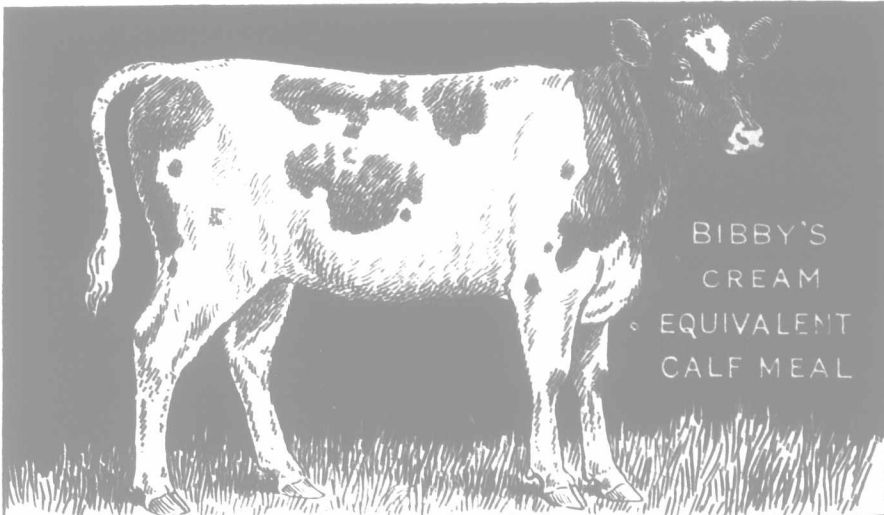
The Steadiest-Running Plow Built

No matter what the soil nor how rough and uneven the land, the Beaver Gang will cut every furrow the same depth and width. That is due to the EXTRA-LARGE land wheel—it rides smoothly over things that would bump another plow out of the ground. Steady, too, because the cushion-spring on land-wheel axle-arm absorbs shocks and concussions, and the plow goes steadily ahead. Cockshutt Straightener Device corrects crooked furrows. Readily handled by a mere boy—can't go wrong. Adjustable Frame changes the furrow width in a jiffy; while new Fine-Adjustment Ratchet alters furrow depth by fractions of inches—merely pull a handy lever. Can be supplied with three styles of bottoms for different kinds of plow-work, from very wide to very narrow. Dust-proof wheel bearings; perfect oiling device; a dozen other BETTERMENTS that put the Beaver Gang ten years ahead of them all. Investigate and know that for yourself. Do so NOW—it will save you money, time, horseflesh, bother with labor, and give you better plowing in far less time.

The Cockshutt Line built right to farm. right, includes not only more than 120 styles of plows—ranging from light garden plows to huge 12-furrow engine gangs—but also all styles of seeders, cultivators and harrows. Write us for details of the kind of implements the business farmer ought to buy this season.

(Would you like a handsomely-colored hanger, showing two items of the Cockshutt Line? Glad to send you one if you'll just enclose two-cent stamp for postage.)

COCKSHUTT PLOW CO.
LIMITED
BRANTFORD - ONTARIO



BIBBY'S
CREAM
EQUIVALENT
CALF MEAL

THE COST OF CALVES

The average dairyman is unable to raise young stock profitably because of the expense of feeding the amount of new milk necessary for the thrifty growth of young calves. Even when ordinary calf-foods are used it is necessary to add so much milk that the cost of feeding is excessive—and there is the added expense of risking scoured and pot-bellied calves. Yet here is a food, which when simply added to water, half-a-pound to six quarts, makes a gruel which contains all the elements of nutriment found in a like quantity of fresh milk, and which can be fed with perfect safety to the youngest stock. In fact, there is no other food, save fresh milk itself, which contains so much nutriment as

BIBBY'S CREAM EQUIVALENT

Sold by most dealers, or direct from WM. RENNIE CO., Ltd., Toronto, Montreal, Winnipeg, Vancouver. 2

BRAMPTON JERSEYS

CANADA'S PREMIER HERD.—Strengthened regularly by importations from United States, England and the Island of Jersey. We have animals of all ages and both sexes for sale, and the largest herd in Canada to choose from. Write for prices and particulars. Long-distance telephone at farm.

B. H. BULL & SON,

BRAMPTON, ONT.

WANTED—HERDSMAN

Capable of taking charge of show and breeding herd. Apply, giving full particulars, to J. A. WATT, SALEM, ONT., ELORA STATION, G. T. R. AND C. P. R.

Glen Gow Shorthorns

Our present offering is 9 bulls from 6 to 14 months of age, sired by imp. Ben Loman and imp. Joy of Morning, and out of imp. and Canadian-bred cows. Also a number of very choice heifers. No fancy prices asked. Long-distance phone. WM. SMITH, Columbus, Ontario Brooklin and Myrtle Stns.

Shorthorns, Cotswolds, Berkshires.

Nine bulls from 9 to 14 months, from imp. and home-bred cows, and sired by Pride of Day 55192; also cows, heifers and heifer calves. Nothing to offer in Cotswolds or Berkshires.

Chas. E. Bonnycastle, Campbellford, Ont. Post Office and Station.

MAPLE HOME SHORTHORNS

Our present offering: Two choice young bulls; also some good heifers and young cows. Away above the average. Pure Scotch and Scotch-topped.

A. D. SCHMIDT & SONS, Elmira, Ont.

CLOVER DELL SHORTHORNS

My herd are profitable milking Shorthorns. For sale are a few females and two good red bulls, of good milking dams, for spring service. L. A. Wakely, Belton, Ont., P.O. and Station. Farm within 1/2 mile of station.

Brownlee Shorthorns Three young bulls left yet, 14 to 16 months. Will sell at a bargain. Also a few heifers. Very reasonable. Good milking strains.

C. P. R. station. D. BROWN, AYR, ONT.

ARE YOU IN WANT OF A CHOICE BULL TO HEAD YOUR HERD?

We are offering choice bull calves sired by Fountain's Boyle, who won first prize at Toronto, London and Ottawa, who also headed first-prize herd at Toronto and Ottawa. Also offering some choice heifers.

D. DUNCAN, DON, ONT.
DUNCAN STATION, C. N. O.