



Basting Line and Added Seam Allowance) Two-Piece Skirt, 34 to 32 waist.



One-Piece Gown, 34 to 42 bust.



Basting Line and Added Seam Allowance) Skirt with Yoke, 34 to 32 waist.



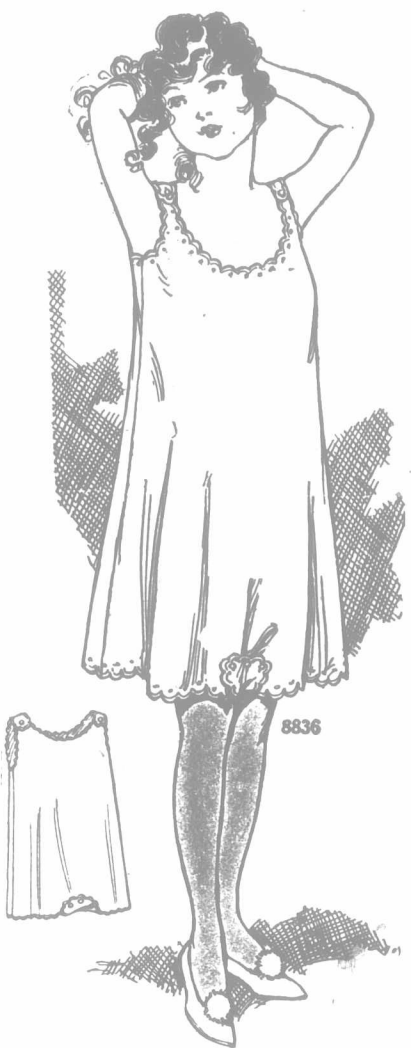
One-Piece Dress, Misses and Small Women, 16 and 18 years.



8870 Girl's Dress, 8 to 14 years.



8802 (With Basting Line and Added Seam Allowance) Gown with Over-Bodice, 34 to 42 bust.



8836 (With Basting Line and Added Seam Allowance) Girl's Combination, Under Garment, 8 to 14 years.



8831 (With Basting Line and Added Seam Allowance) Child's Fur Set consisting of Neck Piece, Muff and Cap, 2 sizes 2 or 4, 6 or 8.



8876 Child's Dress, 1, 2, 4 and 6 years.



8827 (With Basting Line and Added Seam Allowance) Combination Corset Cover and Envelope Drawers, 31 to 42 bust.



8854 Girl's Coat in Russian Style, 8 to 14 years.



8833 (With Basting Line and Added Seam Allowance) Coat with Plaits for Misses and Small Women, 16 and 18 years.

8798 (With Basting Line and Added Seam Allowance) Skirt with Plaits for Misses and Small Women, 16 and 18 years.



8844 Gathered Coat, Small 34 or 36, Medium 38 or 40, Large 42 or 44 bust.



8851 Two-Piece Skirt, 24 to 34 waist.



8799 (With Basting Line and Added Seam Allowance) Fancy Waist, 34 to 42 bust.

8785 (With Basting Line and Added Seam Allowance) Straight Skirt Small 26 or 28, Medium 30 or 32, Large 34 or 36 waist.

## The Beaver Circle

### OUR SENIOR BEAVERS.

[For all pupils from Senior Third to Continuation Classes, inclusive.]

#### The Jolly Tree.

By Pauline Frances Camp.

If you never have planted a Jolly Tree,  
Don't wait for an Arbor Day,  
But take a bit of advice from me,  
And do it without delay.  
It starts from a little, smiley seed,  
And quick as a flash 't will sprout;  
And when you have tasted the fruit,  
Indeed,  
You never will be without.

As soon as the smiley seed is in,  
At once it begins to grow;  
And the dear little giggly-buds begin  
Their gay little heads to show.  
And truly amazing it is to see,  
How in less than a wink and a half,  
A giggly-bud can grow to be,  
The jolliest kind of a laugh!

The fruit is a cure-all, doctors say—  
The very thing for the blues;  
And when 'tis applied in the proper way,  
Is good for a bump or bruise.  
Plain bread and butter, a treat will be,  
With Jolly sauce on the tray.  
Oh, come, let us plant a Jolly Tree,  
Nor wait for an Arbor Day.

#### Funnies.

Little Helen, the minister's four-year-old daughter, was an interested witness at a wedding ceremony performed at the parsonage.

The next day she was discovered with her small brother and a child from over the way lined up before her, remarking in tones of awful solemnity: "Will you have thith lady to be your couthin?"

Callers were at the door and Bobbie was told to show them into the parlor. He did so, and while his mother was fixing herself up, he sat there rather em-