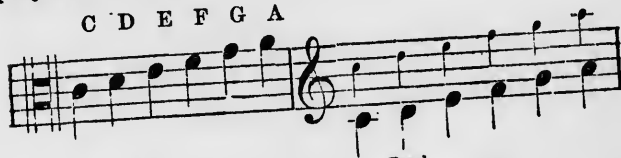


Q. How do you transpose from the *contralto* to the treble clef?

A. By reading every note a degree higher, and playing the notes an octave lower.

C D E F G A

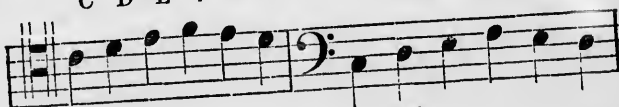


Q. How do you transpose from the tenor to the bass?

A. By reading the notes four degrees lower, and playing them an octave higher.

C D E F E D

*Played an octave higher.*



Q. How do you transpose from one key to another?

A. By adding, after the clef, the sharps or flats which belong to the new key, and reading the notes according to the new tonic.

Q. How do you transpose from the key of C to that of D, a note higher?

A. Having placed after the clef two sharps, viz., F and C, which are necessary for the key of D, I read or play every note a degree higher.

GOD SAVE THE KING, IN THE KEY OF C.

