

**Overland**  
TRADE MARK REG.

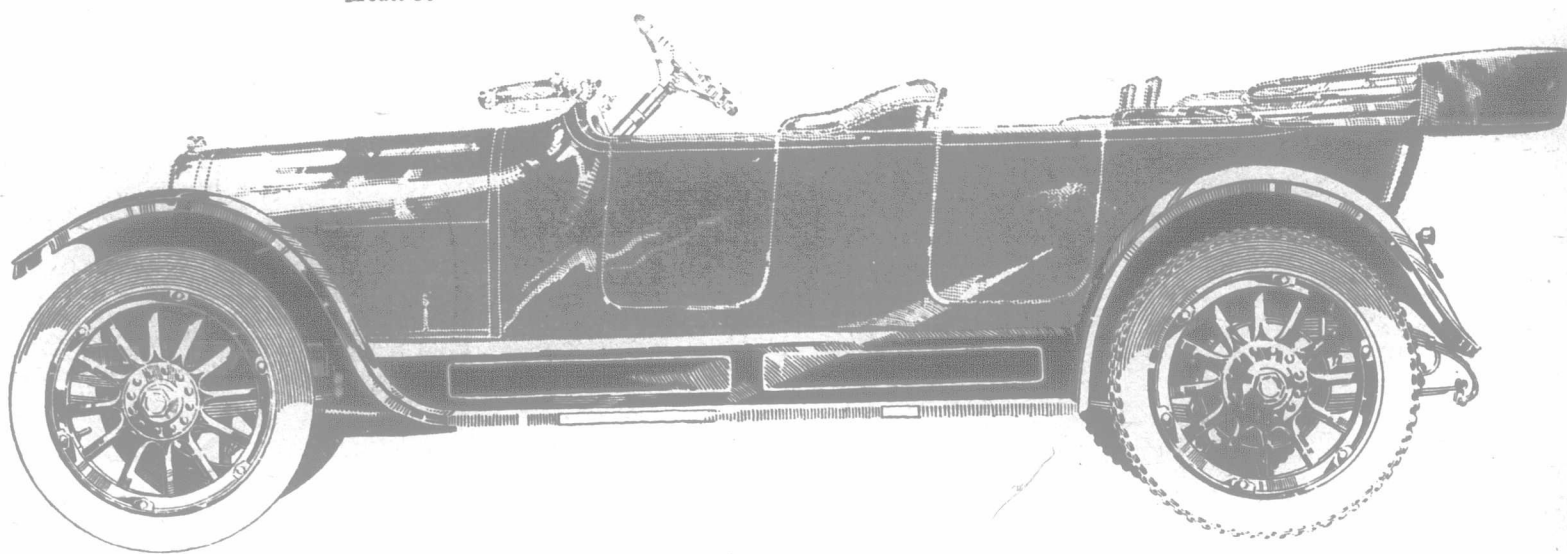
**"Six"**

Model 86

--

**\$1600**

f.o.b. Hamilton, Ont.



## Just "Six" Facts—

To you who are confused with and weary of long drawn out aside-from-the-point arguments, we present these Six important basic facts:

The Overland Six has a wheelbase of one hundred and twenty-five inches.

Many a Six—costing more—has a *shorter* wheelbase.

The Overland motor develops full forty-five horsepower.

Many a Six—costing more—has considerably less power; considerably less speed.

The Overland is a roomy Six—seating seven adults with ease.

Many a Six—costing more—has a smaller tonneau; hence less comfort.

The Overland Six has 35"x4½" tires with non-skids on the rear.

Many a Six—costing more—has smaller tires.

The Overland Six has high tension magneto ignition.

Many a Six—costing more—has not.

Overland electric control buttons are on the steering column—within reach.

On other Sixes, that cost more, they are not as conveniently located.

These few major items alone should, we believe, convince any intelligent buyer of the downright wisdom and out-and-out economy of selecting an Overland Six.

Handsome catalogue on request. Please address Dept. 494



**The Willys-Overland of Canada, Limited, Hamilton, Ont.**

Model 83

Four-Cylinder 5-Passenger Touring Car - - \$1050  
Roadster - - - - - \$1015

f.o.b. Hamilton, Ont.