

THE customs revenue shows fairly well. The collections for the month of October amounted to \$1,993,271, as compared with \$1,744,127 for the same month in 1897, an increase of \$249,000.

THE growing shoe business of J. D. King & Co., requires them to procure another factory. They have therefore leased premises in Levis, Que., where they will employ 50 to 100 hands.

IN July of last year, J. F. O'Neill, Jr., succeeded to the grocery business of his father at Point Edward. Since that time his position financially has gradually grown worse. Now he is obliged to assign.—G. A. Rosbach, butcher in Toronto, has made an assignment.

THE firm of Currie Bros. & Co., doing a general and lumbering business at Andover, Victoria county, have assigned for the benefit of creditors, among whom are St. John and Fredericton parties. A meeting of the creditors was to be held this week in St. John, for the purpose of appointing an inspector.

JAMES LAWSON, of the British Columbia box factory at Vancouver, is about to start a new industry in the manufacture of cigar boxes. Machinery has been ordered from San Francisco. The capacity will be 1,000 boxes a day. This will be the only cigar box factory west of Toronto. Honduras cedar will be used in making the boxes.

THE town of Galt has a problem on its hands. The rate-payers of the town passed a by-law to expropriate the gas and electric light works. On conferring with eminent legal authorities in Toronto, Mayor Radford discovered that there was nothing in the Ontario statutes warranting the expropriation by a municipality of electric plants.

MANY will regret to learn that the five-story printing office and stationery establishment of J. & A. McMillan, of St. John, which is one of the oldest firms in Canada, and has a continental reputation, was completely gutted by fire on Saturday. The loss is probably \$40,000, insurance \$16,000.

THE Patent Cloth Board Co., of Parry Sound, are rapidly turning out clothboards for the English market. This week a car load of boards has been shipped by them, we are told, to Manchester, England. Besides this branch of manufacture, the company have now orders for carloads to Paisley and Glasgow. They also make veneers for organ-builders, at such points as Guelph and Bowmanville. This is one of the industries for which Ontario is well adapted, and its growth and development may be predicted with reasonable safety.

A PEAT fuel company will shortly commence operations in Simcoe county near Barrie. The plant required is a large one, costing \$13,000. The manufactured peat is sold in cylinders, ranging from two to three inches wide, and during a recent test at the power house of the Toronto Metropolitan Railway, it was shown that 100 lbs. of peat were equal to 98 lbs. of coal, and that there was only 4 per cent. of ash from the former, whereas coal has from 7 to 20 per cent. The market price of the new fuel will be between \$3.50 and \$4 per ton.

A LONG hidden deficiency, reaching about \$57,000, has been discovered in the accounts of the late John H. Alleman, cashier of the First National Bank of Hanover, Penn., who died about three weeks ago. The dead man had been cashier for 28 years, and covered up his stealings by keeping drafts afloat at a distance.

A DESPATCH of Tuesday, from Ailsa Craig, Ont., says that Isaac Grossman, dry goods merchant, of that place, is missing, and detectives are searching for him. It is charged that Grossman obtained a large amount of goods, estimated at from \$10,000 and \$17,000 from various Canadian wholesale firms, and then quietly disposed of them. The chief creditors of the missing man are said to be in London, Toronto and Montreal. In the present proceedings, R. C. Stuthers, of London, who was nearest the scene of action, took the initiative. It is the general belief that Grossman has crossed the line.

IT was announced on Saturday last that the grain freight rate will go up one and one-half cents per hundred pounds on Nov. 10th. The advance is based as usual on the Chicago-New York rate, and applies to east bound traffic to Boston, New York and west St. John. The present rate is 14 cents per hundred pounds, so that after the tenth it will be 15½ cents. At the same time the C.P.R. announced their import freight tariff from West St. John, taking effect on November 15th. This is in view of the approaching season of navigation, and only applies to cargoes from ocean vessels.

THE annual meeting of the Consumers' Gas Company was held on Monday last, when the fiftieth annual report of the directors was adopted. The output of gas for the year ending September 30th, last, was 707,122,000 cubic feet, its illuminating power over 20 candles, the net price 90 cents per thousand cubic feet, and the number of meters in use 24,257. The receipts were \$628,416.03, the expenditure, \$373,547.52. There was \$170,000 paid in dividends; \$42,101.58 carried to profit and loss, while \$50,000 was set aside for depreciation in plant. The members of the board were re-elected, as follows: Messrs. Samuel Alcorn, J. L. Blaikie, Henry Cawthra, George R. Cockburn, Isaac C. Gilmor, George Gooderham, James Henderson, Thomas Long, Dr. L. W. Smith (president), Sir Frank Smith (vice-president), A. J. Somerville, and Thomas R. Wood.

STOCKS IN MONTREAL.

MONTREAL, Nov. 2nd, 1898.

Stocks.	Highest.	Lowest.	Total.	Closing Prices.		Average, 1897.
				Sellers.	Buyers.	
Montreal	247	247	1	250	246	240
Ontario				114	110	99½
Molson's				205	200	195
Jac. Cartier					110	
Toronto				250	240	237
Merchants	182½	182½	2	185	180	186½
Commerce				150	150	137½
Union				11	105	103
M. Telegraph	177	177	92	180	175½	176
R. & O. Nav. & Id	96½	96	150	96	95	110½
Street Ry.	280	276½	18 6	276½	276½	229½
do. New... ..	274	271	966	274	270½	227
Gas	193	191	2382	191½	191½	187½
C.P.R.	82½	81½	6663	81½	81½	8½
Land Grant bds.					110	109
Bell Tele.	173½	173	149	173½	173	177½
do. new						
N. W. Land pref				55	51	50
Mont. 4% stock						

Debentures.

Municipal Debentures bought and sold, also Government and Railway Bonds. Securities suitable for Investment by Trustees and Insurance Companies and or Deposit with the Government, always on hand.

GEO. A. STIMSON & CO.,

24-26 King St. West

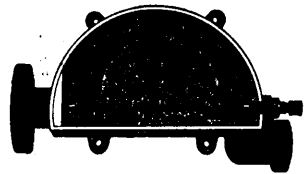
Toronto, Ont

THE

HEINTZ
TRAP
SAVES
STEAM

and increases the productive power

Write for Circular D.
Interests all Steam Users.



The James Morrison Brass Mfg. Co
LIMITED,
Adelaide West, Toronto
Engineers' & Plumbers' Supplies

\$4,000.00

An incorporated company having a profitable patent for which there is a large demand, is desirous of increasing its capital to the extent of \$4,000. Correspondence solicited. Address "Confidence," care of Monetary Times.

Notice to Shareholders

Dominion Building and Loan Association,
now known as the
DOMINION PERMANENT LOAN CO.

Shareholders having Terminating Share Certificates, issued during the years 1890-1-2, payable at the expiration of eight years from the date thereof are requested to, at once communicate with the undersigned if they wish to test the right of the Association to cancel the said shares at the discretion of the Directors.

H. GUMMER,
"Herald," Guelph, Ont.

GRAND TRUNK RAILWAY
SYSTEM
REACHES

Hunting and
Fishing Resorts
THAT ARE UNSURPASSED AND
That Abound in all Kinds of Fish
and Game.

Open season for Deer, November 1st to 15th, inclusive.
Open season for Ducks, September 1st to December 15th, inclusive.
Open season for Geese, September 15th to May 1st, inclusive.
Open season for Grouse, September 15th to December 15th, inclusive.
Open season for Hares, September 15th to December 15th.
Open season for Partridge, September 15th to December 15th.
Hunting and Fishing Guide and all information from any agent of Grand Trunk Railway or from
M. C. DICKSON, D.P.A., Toronto