

Church's Cold Water Alabastine.

The Best
Wall Coating
On the Market.
Sold by
Paint and Hardware
Dealers everywhere.
New Advertising
Features
This Season.
150 Newspapers
Educating the
People.
Order now.
Invoices dated
April 1st.

Our Travellers now on the
road.

THE ALABASTINE CO., Ltd.
PARIS, ONT.

Band Saw Mills

Do not longer put off en-
quiring thoroughly into the advan-
tages of the Band over the Circular
or Gang. They are many and great,
and mean a handsome profit where
with circular there is little or none.
We build the new "ALLIS" Band
and everything needed in a modern
saw mill. Write to-day.

WATEROUS,
BRANTFORD, Can.

1, \$17.50; Ferrona, No. 1, \$17.50; machinery
scrap, \$14 to 15.00; common do., \$12 to
13.00; bar iron, Canadian, \$1.50 to \$1.60;
British, \$2.00 to 2.15; best refined, \$2.40;
Low Moor, \$5.00; Canada plates—
Blaina, or Garth, \$2.15, 52 sheets to box;
60 sheets \$2.20; 75 sheets \$2.25; all
polished Canadas, \$2.30 to 2.75; Terne
roofing plate, 20x28, \$5.75 to 6.00; Black
sheet iron, No. 28, \$2.50; No. 26, \$2.40;
No. 24, \$2.30; Nos. 17 to 20, \$2.25; No. 16
and heavier, \$2.50; tin plates—Bradley char-
coal, \$5.50; charcoal, I. C., Alloway, \$3.15; do.
I. X., \$3.90; P. D. Crown, I. C., \$3.75; do.
I. X., \$4.75; Coke I. C., \$2.75 to \$2.80; coke-
wasters, \$2.65; galvanized sheets, No. 28, ordi-
nary brands, \$3.75 to 4.15; No. 26, \$3.50 to 3.90;
No. 24, \$3.65 in case lots; Morewood, \$5.15 to
5.40; tinned sheets, coke, No. 24, 6c.; No. 26,
6½c.; the usual extra for large sizes. Canadian
bands, per 100 lbs., \$1.85; English ditto, \$2;
hoops, \$2.15. Steel boiler plate, ½ inch
and upwards, \$1.90 to 2.00 for Dalzell, and
equal; ditto, three-sixteenths inch, \$2.60;
tank iron, ½ inch, \$1.50; three-sixteenths do.,
\$2.25; tank steel, \$1.70; heads, seven-six-
teenths and upwards, \$2.00; Russian sheet iron,
9 to 10c.; lead, per 100 lbs., pig, \$3.15;
sheet, \$4 to 4.25; shot, \$6 to 6.50; best cast
steel, 9 to 10c.; toe calk, \$2.25; spring, \$2.50;
sleigh shoe, \$1.90; tire, \$2; round machi-
nery steel, \$2.50; ingot tin, 16c. for best;
Straits, 15½c.; bar tin, 16½ to 17c.; ingot cop-
per, 11½ to 12c.; sheet zinc, \$4.50 to 4.75;
Silesian spelter, \$4.25; American do., \$4 to 4.25.
Antimony, 9 to 9½c.; bright iron wires, Nos.
0 to 8, \$2.60 per 100 lbs.; annealed and
oiled, do., \$2.70; galvanized, \$3.15; the trade
discount on wire is 20 per cent. Barb
and twisted wire and staples, 3½c.; freight paid on
half-ton lots.

OILS, PAINTS AND GLASS.—While business
is reported fair, orders are hardly up to last
year at this date. In oils there are no changes
within the week. Paris green is very firm at
the late advance, from 13 to 13½c. being quoted
in bulk, and 15c. in small packages. Dry leads
are stiffening at home, but no change has been
made here. Manufacturers' agents are quoting
higher prices for whiting, and new supplies will
cost about two cents a hundred dearer. We
quote: Turpentine, 46c. per gal. for single brls.,
2 to 4 brls., 45c.; 5 brls. and over, 44c. Lin-
seed oil, raw, 55c. per gal.; boiled, 58c.;
4 to 9 brl. lots, 1c. less; olive oil, machinery,
90c.; castor, in lots, 6½c.; single cases, 7c.;
tins, 7½c.; Nfld. cod, 34 to 35c. per gal.;
Gaspe oil, 35c. per gal.; steam refined seal, 42
to 43c. per gal. in small lots. Leads (chemi-
cally pure and first-class brands only), \$4.75 to
5.00; No. 1, \$4.50 to 4.75; No. 2, \$4 to 4.25;
No. 3, \$4; dry white lead 4½ to 5c.; genuine
red do., 4½ to 4¾c.; No. 1 red lead, 4c.; putty,
\$1.60 to 1.65 in bulk, \$1.75 to 1.85 in bladders,
\$2 to 2.10 in tins; London washed whiting, 40
to 45c.; Paris white, 85 to 90c.; Venetian red,
\$1.50 to 1.75; yellow ochre, \$1.50 to 1.75; spruce
ochre, \$2.25 to 2.50; window glass, \$1.25 per
50 feet for first break; \$1.35 for second break;
third break, \$2.90.

WOOL.—A fair number of small sales of Cape
wool are reported, but the aggregate of busi-
ness is limited. Some of the mills are reported
to be bringing in moderate lots of low grade
American wool. Purchases on Canadian im-
porters' account have been made at the Cape,
and though stocks on spot are small, there
seems no hurry in having the same forwarded.
There is little or no Australian here. We
quote:—Cape, 14 to 16c.; Natal, 15 to 17c.;
B. A. scoured, 27 to 35c.; domestic fleece, 22
to 25c.; pulled do., 22 to 23c.

TORONTO MARKETS.

TORONTO, Feb. 26th, 1896.

DRUGS.—The distributive movement is not
satisfactory, orders for present requirements
being small. Some business in Paris green
for spring delivery is being done. Values are
well maintained. Opium is firm. Cables from
Salonica report cold weather and serious
damage to the growing plant: It is said that
prices in primary markets have advanced and
some sellers have withdrawn their offers.
Morphine prices are firm in the local market,
but values abroad are unchanged. Quinine re-
mains firm. Insect powder is advancing.
Glycerine is firm. Latest foreign advices on

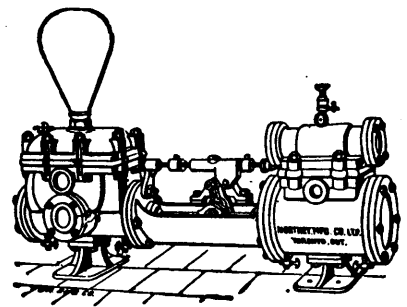
See it

If you haven't seen it. It is a business
paper for everybody. No man engaged in
mercantile pursuits can afford to be without
it. It gives you in a convenient form the
gist of everything published in all of the
most prominent financial and trade papers
in the country, besides an abundance of
fresh and original matter upon the most im-
portant topics affecting the business world.
When you read the "Lawyer and Credit
Man and Financial-Trade-Press Re-
view" you feel as if you had read every-
thing worth reading along business lines—
and you have.

WINSBOROUGH-IRVINE CO.,

Times Bldg., N. Y.

Sample copy sent free if you will men-
on this paper.



Duplex

AND SINGLE

Steam

AND POWER

Pumps

Hydraulic Presses

FOR ALL PURPOSES

Northey
Mfg. Co.
Limited

TORONTO.

LAURIE ENGINE CO., Montreal, Sole
Agents Quebec Province.