

ling of the ceiling. There are also store-rooms, cloak-rooms, lavatories, &c., on each floor. The sanitary & heating arrangements throughout the building are of the most up-to-date character. Luxur prisms are used in a number of transom lights, to afford the greatest amount of illumination. The ground floor is connected with the operating room by pneumatic tubes; telegrams are placed in a small leather box, then inserted in the tubes, electric power turned on, & wind pressure created by means of a small blower. Received telegrams drop from the operating room into the delivery department by gravity. Tubes also connect the Superintendent's office with the operating room & the first floor.

The operating room has a capacity for 15 quartette operating tables, although only 9 are being set up at present. It is lighted by 3 large windows in the front & a skylight in the rear, & the ceiling being 14 ft. high, & the room well ventilated, the operators will have very pleasant quarters. The tables were made in Vancouver according to the standard adopted by the Co. The tops are of red cherry; the legs, etc., are of hard maple. Instead of the tables being divided into 4 spaces by glass partitions, as formerly, the sounders (or reading instruments) are placed in small resonators by which the sound is directed to the operator's ears. The tables are connected by cables through zinc-lined ducts under the floor to a distributing board in the switch cabinet. This cabinet is a novelty on the Pacific coast. The face of it is divided into 3 portions, the first on the left being devoted to the battery switches & appurtenances. These are mounted on a marble slab in order to prevent any danger from fire through the arcing of the electric currents. The centre portion is occupied by what is known as a local switch,

by means of which any duplex, quadruplex or single wire can be connected with any other set in the office, thus permitting wires to be worked through, for instance, from Montreal to San Francisco without the interposition of the operator at Vancouver. The remainder of the centre section is taken up by a number of small electric light switches which are used for varying the power on the different multiplex sets. The right hand section is occupied by the main line switch, a patent especially designed to avoid any arcing of the electric currents, which is very liable to happen in a moist climate when either storage battery or dynamo currents are used. Nearly the whole of the upper portion of the cabinet is covered by incandescent lamps. These are for the purpose of lengthening out the various circuits in the office; they are also frequently of benefit in calling attention to outside interference with the wires, as when any wire becomes earthed or crossed by another wire within 40 or 50 miles of the city the lamps will glow, thus directing the attention of the chief in charge who at once disconnects the battery power & tests out the fault. Inside of the cabinet are two motor generators. These are used to transform the 500 volts electric railway current to 140 & 7 volts, respectively, for the purpose of charging the storage batteries. At the other end of the interior of the cabinet is the before-mentioned distributing board & the terminals of the aerial cables. A number of short cables connect one portion of the distributing board to the various appliances on the face of the cabinet. Connection is made from these cables to the cables from the tables by short pieces of wire. By this arrangement any change that it is desired to make in the wiring of the office can be easily made at this point without altering the connections

CONTINUOUS RAIL JOINT COMPANY OF AMERICA,

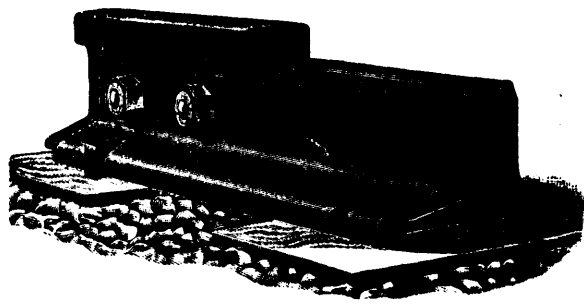
NEWARK, N.J.

Millions in Use on 80
Railroads.

**Fewest Parts.
Strongest and Safest.
Provides for increased ton-
nage up to date.
Steel Castings.**

CANADIAN FACTORY:

F. E. CAME,
17 Place d'Armes Hill,
MONTREAL



LELAND HOTEL, Winnipeg Man., W.
D. Douglas, Proprietor. Rooms en suite with baths and all modern conveniences. Rates \$2 to \$4 a day. Special rates for families and large parties, according to accommodation and length of time. Though moderate in price the Leland is first-class in every respect. It is especially adapted to please the commercial trade. It is in the centre of the wholesale and retail district. It is in direct communication with all parts of the city by car lines. It is supplied with the purest spring water from flowing well on the premises.

The Canadian Pacific Railway Company.

Dividends for the half-year ended 31st December, 1899, have been declared as follows:—

On the Preference Stock three per cent.

On the Common Stock three per cent.

Warrants for the Common Stock dividend will be mailed on or about 2nd April to Shareholders of record at the closing of the books in New York and London respectively.

The Preference Stock dividend will be paid on Monday, 2nd April, to Shareholders of record at the closing of the books at the Company's London Office, 1 Queen Victoria Street, London, E.C.

The Common Stock Transfer books will close in London at 3 p.m. on Tuesday, 27th February, and in Montreal and New York on Friday, 9th March. The Preference Stock books will close at 3 p.m. on Tuesday, February 27th.

All books will be reopened on Thursday, 5th April.

By Order of the Board,

CHARLES DRINKWATER,

Montreal, 12th February, 1900.

Secretary.

THE FIRSTBROOK BOX CO.,

LIMITED.

CROSS ARMS, TOP PINS,
AND SIDE BLOCKS,

✻ ✻ TORONTO. ✻ ✻

The Canadian Pacific Railway Company.

NOTICE TO SHAREHOLDERS.

The Nineteenth Annual Meeting of the Shareholders of this Company for the election of Directors and the transaction of business generally will be held on Wednesday, the fourth day of April next, at the principal office of the Company at Montreal at 12 o'clock noon.

The Common Stock transfer books will close in London at 3 p.m. on Tuesday, 27th February, and in Montreal and New York on Friday, 9th March. The Preference Stock books will close at 3 p.m. on Tuesday, February 27th.

All books will be reopened on Thursday, 5th April.

By Order of the Board,

CHARLES DRINKWATER,

Montreal, 12th February, 1900.

Secretary.



IF time has a commercial value;
promptness secures business
immediate information is required:
an answer is wanted, and wanted quick:
you are not in business for exercise:

**STAY AT HOME
AND TELEPHONE.**

The Bell Telephone Company of Canada

will be pleased to furnish details.

STEEL, PEECH & TOZER, LIMITED,

SHEFFIELD, ENGLAND.

**STEEL AXLES, TYRES, AND
SPRING STEEL.**

"PHENIX" Loco. Spring Steel is the
accepted Standard in Canada.

SOLE AGENTS:

James Hutton & Co., Montreal.

UNIFORM CAPS

For Steam and Electric Railway, Steam-boat, Yacht, Express and Telegraph Officials, Messengers, etc. Also Hats and Helmets.

Embroidery in Gold and Silver Bullion,

As Letters, Badges, Wreaths, &c., &c.

W. H. CODDINGTON,
Hamilton, Ontario.

NOTICE is hereby given that The Dominion Atlantic Railway Company will apply to the Parliament of Canada, at the next session thereof, for an Act confirming the company's issues of capital stocks, the conveyance to the company by the Windsor and Annapolis Railway Company, dated the thirty-first December, 1895, the Mortgage Trust Deeds made by the company, and the first and second debenture stocks, issued and to be issued, thereunder, to the amount of 940,000 pounds (sterling), and also to enable the company to increase the capital stock, borrow and secure money upon ships and other outside property of the company, to create reserves, and for other amendments to the Act incorporating the company.

CHRYSLER & BETHUNE,

Solicitors for the Company.

Dated the 7th November, 1899.

THE HUNTER, ROSE CO.,

All kinds of... Limited.

PRINTING, BOOKBINDING,
OFFICE STATIONERY
AND ACCOUNT BOOKS.
Temple Building, • • Toronto.