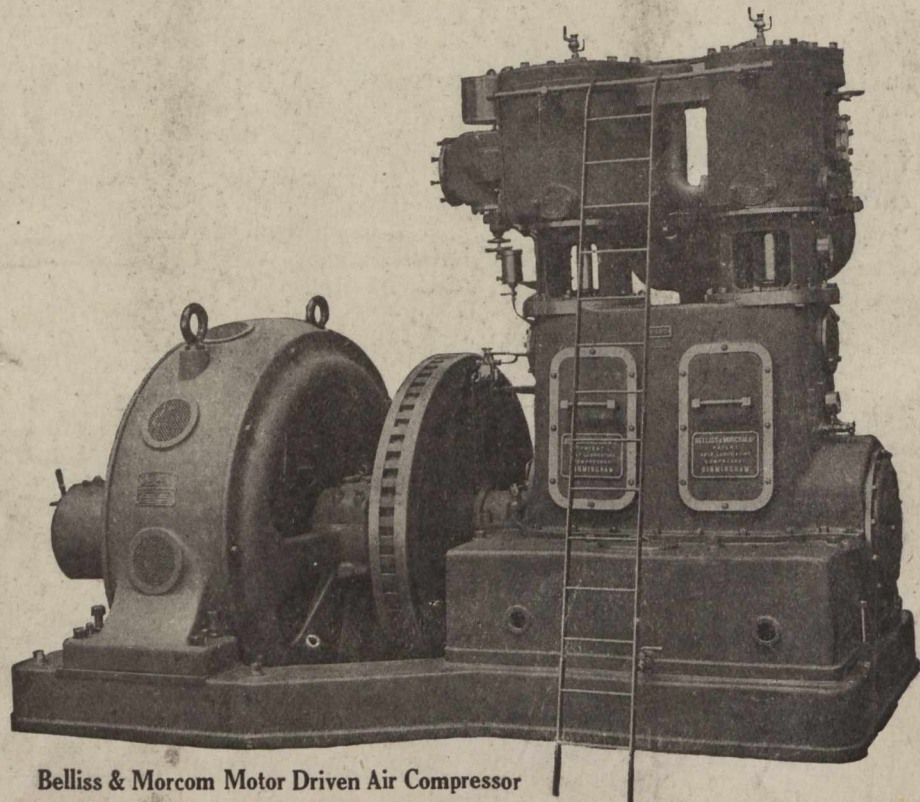


# BELLISS & MORCOM

Air Compressors  
Diesel Engines  
Steam Turbines  
Steam Engines  
Condensers

**LAURIE  
& LAMB**

211 Board of Trade Bldg.  
MONTREAL



Belliss & Morcom Motor Driven Air Compressor

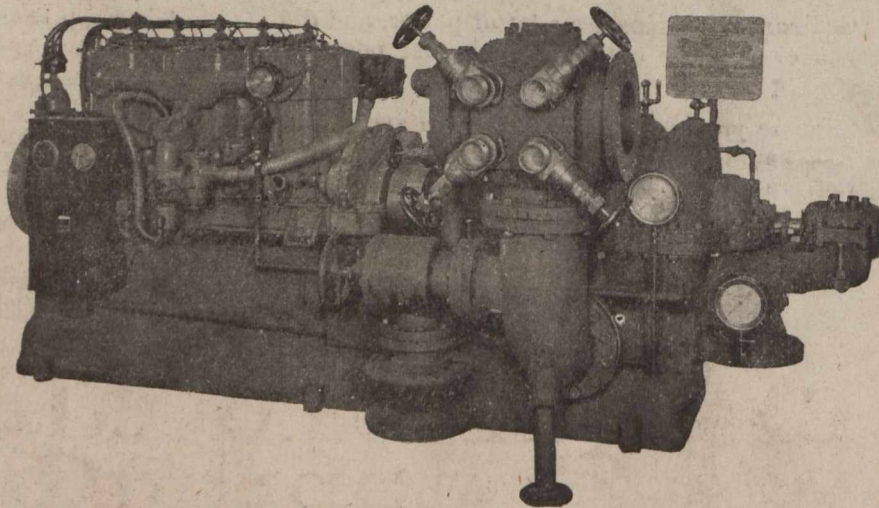
## Lea-Courtenay self-contained fire pump unit for the protection of the isolated plant.

The first successful  
self-contained fire  
pump equipment was  
a

### LEA - COURTENAY CENTRIFUGAL PUMP

coupled to a gasoline  
engine. There are no  
stand-by charges for  
electrical current. Its  
operation does not  
rely on your Power  
Plant or the Central  
Station.

Lea-Courtenay Centrifugal Pumps are built on insurance standards; in capacities of 500, 750, 1,000 and 1,500 G.P.M., to be operated by gasoline engine, steam turbine or electric motor; singly or in combination for emergency. Ask for bulletin giving details.



**FRASER & CHALMERS OF CANADA, Limited**

GUARANTEE BUILDING

::

::

MONTREAL, QUE.