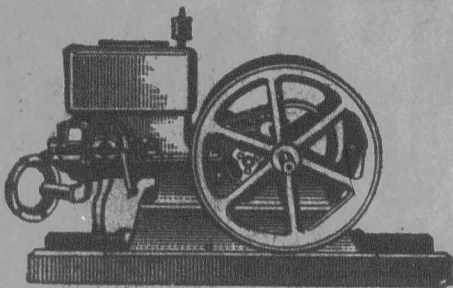


**QUALITY—DURABILITY—EFFICIENCY**

ARE COMBINED IN THE MAKING OF JOHN DEERE IMPLEMENTS

**"WATERLOO BOY" KEROSENE ENGINES**



The gold medal winner at numerous competitive international expositions. Over 25,000 manufactured and sold in a single year. Twenty-three years the recognized leader in reliable economical power. Built in sizes from 2 to 25 H.P.

The "Waterloo Boy" is built upon ORIGINAL kerosene principles.

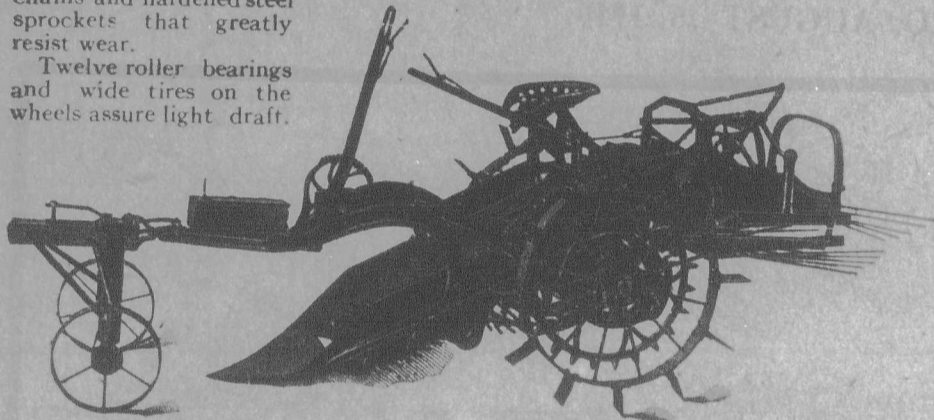
**THE HOOVER POTATO DIGGER**

THE HOOVER POTATO DIGGER digs up all the potatoe in the field and piles them in neat rows where they can be handled with minimum labor.

The shovel is of best quality high-carbon crucible steel and shaped so as to gather the potatoe with the least possible loss. No danger of cutting the potatoe to the extent that a plow or hoe does.

Solid steel frame, strong main sides of Bessemer steel, beams of best quality charcoal malleable castings, and steel chains and hardened steel sprockets that greatly resist wear.

Twelve roller bearings and wide tires on the wheels assure light draft.



Four Sizes:—No. 300, 304, 308, and 311  
4 HP Cushman Engines can be supplied to all sizes of Hoover Diggers



**THE JOHN DEERE LOW-DOWN  
"The Spreader with the Beater on the Axle"  
MANURE SPREADER**

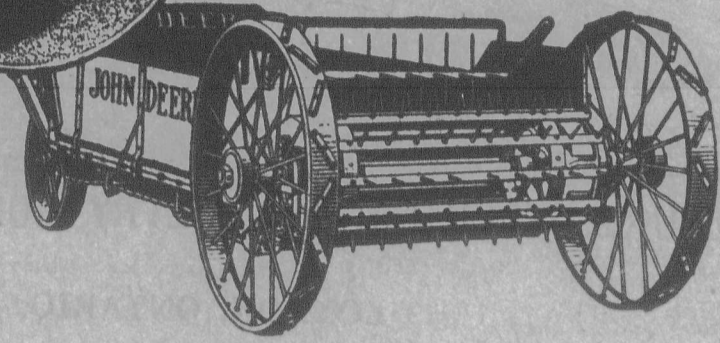
Below is an extract from a letter received from a customer in Eastern Ontario:

John Deere Mfg. Co. Ltd. Welland, Ont., May 13th, 1919

Gentlemen:— I have made considerable enquiry re your machinery especially your Manure Spreader, and this morning was advised by my brother, who spent four years with the Co. as salesman, to buy a John Deere Spreader. I would like the large "C" size fitted with wide-spread and three-horse trees.

We have omitted the name of the above company, but do not hesitate in saying that it is one of the largest Manure Spreader manufacturers in Canada.

Each day's mail brings us recommendations from farmers who realize the superiority of John Deere Implements



**CONSIDER THE EXCLUSIVE ADVANTAGES OF THE JOHN DEERE MANURE SPREADER**

The PATENTED FEATURE of mounting the Beater on the Axle of the JOHN DEERE SPREADER has practically revolutionized the art of spreader building. It has made possible the Low-Down machine without sacrificing the LARGE DRIVE WHEELS, and has eliminated nearly 150 WORKING PARTS AND CASTINGS that are necessary on other makes of Spreaders on the market TO-DAY. This insures LIGHT DRAFT and practically NO TROUBLE.

The John Deere Low-Down Manure Spreader is GUARANTEED to give satisfaction TO THE MOST PARTICULAR FARMER.

See your nearest John Deere dealer, or write direct. Beautifully illustrated folders on request. Make it a point to see our exhibit while at Toronto.

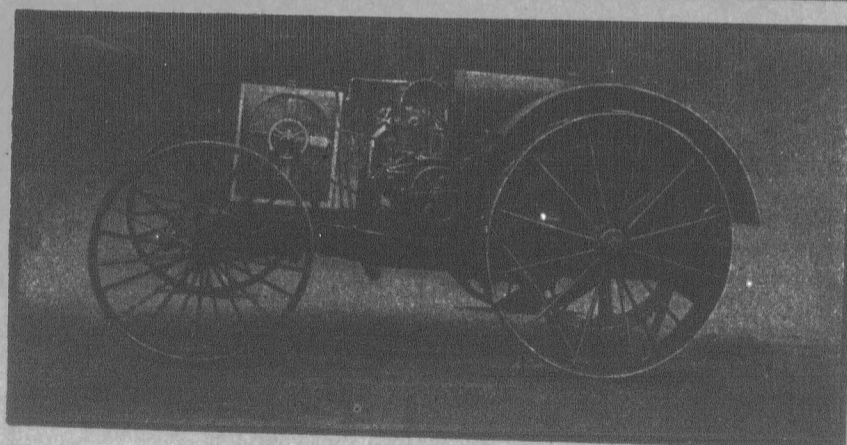
John Deere Mfg. Co. Ltd.

GET QUALITY AND SERVICE



JOHN DEERE DEALERS GIVE BOTH

Welland, Ontario



**Use this Kerosene Tractor for all work**

IT IS the all-year-round helper that takes the "arm" out of "farm."

Built to last and give thorough satisfaction at every point. Its light weight causes it to run on less fuel than others, and prevents it packing the soil; yet it has plenty of power for its work and is strongly constructed to meet the hard usage a tractor will get.



sets new standards among tractors for Economy, Simplicity and Durability. It will do all kinds of field work and all your heavy belt work besides. Forty years of experience makes it make good. Read how it works for you all year 'round:

- |   |  |  |   |
|---|--|--|---|
| <b>SPRING</b>   | <b>SUMMER</b>  | <b>AUTUMN</b>  | <b>WINTER</b>   |
| Plow, harrow, drill, pull manure spreader, cultivate, haul loads. | Pull binder, hay loader, drive clover huller, thresher, plows. | Run cutting box, corn sheller, hay baler, plow, haul grain, fill silos, etc. | Run saw, feed grinder, and do all other belt work you have. |

Write for illustrated folder, "Doing the Impossible."

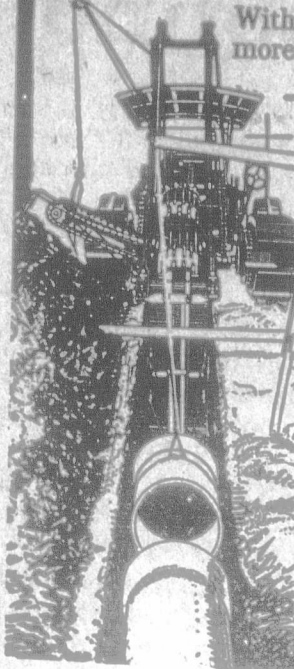
**E. LEONARD & SONS LIMITED** London Canada

**Mason Made \$2500 Net In Five Months**

Nice amount of money for five months' work, isn't it? You can do it as well as Mr. Mason and hundreds of others are doing. The demand for traction ditching is enormous. You can make big money with a

**READ THIS LETTER**  
Work has been so plentiful that I have turned away more than I have done. The machine has given entire satisfaction and far exceeded my expectations. I find it very easy to average 130 rods working ten hours. The machine has been in operation for five months and during that time I have done work amounting to \$4000 which netted me \$2500.  
VICTOR MASON  
Mt. Pleasant, Iowa

**BUCKEYE Traction Ditcher**



With one helper you can dig more ditches each day than can fifteen men by hand. You make a perfect ditch at one cut. Farmers want traction ditching—it's better, can be done quicker and at less cost. When they know you have one, you'll be kept busy; you won't have to look for work, it will come to you. Many Buckeye owners have six to twelve months' work ahead. \$15 to \$20 daily is the net average earnings of hundreds of Buckeye owners. Here is a proposition that will give you a standing and make you a big profit each year.

**Send For Free Book**

A book of solid facts, tells how others are coining money, how they get the work, how much it costs to do it and all the details of operating. Our service department is at your call to get you started and keep you going, to tell you the prices to charge and how to make big money with a BUCKEYE. Send now for the book, you can make big money too.

**THE BUCKEYE TRACTION DITCHER CO.**  
201 Crystal Ave., Findlay, O.

When writing advertisers will you kindly mention The Farmer's Advocate.