

## Ring-Bone

There is no case so old or bad that we will not guarantee

### Fleming's

**Spavin and Ringbone Paste**  
to remove the lameness and make the horse go sound. Money refunded if it ever fails. Easy to use and one to three 45-minute applications cure. Works just as well on Sidebone and Bone Spavin. Before ordering or buying any kind of a remedy for any kind of a blemish, write for a free copy of

**Fleming's Vest Pocket Veterinary Adviser**  
Ninety-six pages of veterinary information, with special attention to the treatment of blemishes. Durable, bound, indexed and illustrated. Make a right beginning by sending for this book.

**FLEMING BROS., Chemists**  
75 Church St. Toronto, Ont.

## Louden Barn Equipments

SAVE Time—Save Labor—Save Expense

Our new catalogue describes every kind of device for money-making and labor-saving on farms. Write to:  
**LOUDEN MACHINERY CO.**  
Dept. 1 Guelph, Ont.

## H. Fraleigh, Forest

LINSEED MEAL  
FLAX SEED  
OIL CAKE  
COTTON SEED MEAL  
Write for Prices.

## ALLOWAY LODGE STOCK FARM

ANGUS SOUTH DOWNS, COLLIES,  
PRIZE BULL CALVES AND  
RAMS, COLLIE PUPS.

**ROBT. McEWEN,** R. R. 4,  
London, Ont.

## MARDELLA SHORTHORNS

Bulls, cows, heifers. Have size, quality; breeding dual-purpose cattle over 40 years. Have great milkers and beefers. Glad to have you see them, or write—**Thomas Graham, Port Perry, R.R.No.3**

**Northlynd** R.O.P. Shorthorns and Jerseys—Butterfly King 19th heads our Shorthorn herd. Edgeley Prince Snnbeam heads our Jersey herd. For sale: A few young heifers and bulls, the get of these great bulls, out of high-record cows. **G. A. Jackson, Downsview, Ont.**

## Beaver Hill Aberdeen-Angus

Males and females, all ages, for sale. Prices right.  
**ALEX. McKINNEY**  
Cheltenham, G.T.R. R.R. No. 1, Erin, C.P.R.

**Foaline**  
TRADE MARK

Given to the pregnant Mare for sixty days before foaling

**PREVENTS**  
**Navel Disease and Joint Ill**  
**in the Foal**

**Price \$3.00 Per Bottle**  
(Delivery Charges Prepaid)

One bottle required for each Mare treated

**GUARANTEED EFFECTIVE**  
**OR MONEY REFUNDED**

**Foaline Laboratory of Canada**  
WINNIPEG - MANITOBA

ORDER NOW

FOALINE LABORATORY OF CANADA, Winnipeg

Please forward.....bottles of  
FOALINE, for which I enclose \$.....

Name.....

Post Office.....

## Questions and Answers.

Miscellaneous.

### Pumping By Engine.

I have a gas engine and a double-gear jack hitched to a two-way pump handle. The jack pulley turns 16 times to lift and lower bucket once. The jack end of handle is 9 inches, pump end 6. It raises bucket 6 inches. It does not pump fast enough. Can you advise me how to hitch it to make it pump faster?

A. S.

Ans.—The jack apparently is run by a belt from the engine. It is intended to reduce the speed and cuts it down too much. To remedy this use a smaller pulley on the jack, or a larger one on the engine. If you want to pump twice as fast as now make the jack pulley one-half or the engine pulley twice the present size.

W. H. D.

### Painting a Silo.

1. Should a stave silo built of yellow pine be painted on the inside as well as on the outside? Should all silos with cement floors have a hole left in the centre for drainage?

2. I want to put in a greater acreage of corn next summer than I will have manure for, and am thinking of trying commercial fertilizer. Should I sow broadcast or put a handful in each hill when planting? We use a marker and plant with a hoe. Is fertilizer generally sown from the grain box of a seed drill or is there a special drill used for sowing it?

J. E. C.

Ans.—1. It is not essential that it be painted on both sides, although we find that many do so and claim that it tends to preserve the wood. Drainage from the silo is not absolutely necessary. The advantage of having a drain is that, should the corn be put in when fresh, any surplus moisture will drain away rather than remain in the silo to sour the silage at the bottom.

2. Both methods of applying fertilizer are followed. By putting it in the hills the corn gets a quicker start, as the nourishment is right at the base of the roots. However, it must be remembered that as the crop grows, the roots spread out and practically cover the ground. If the fertilizer is only in the one place the later rootlets do not get the good of it. For this reason we prefer sowing fertilizer broadcast. There is a special fertilizer drill on the market. We have known cases where the seed drill was used with very good satisfaction when applying a light dressing of fertilizer, but there was a tendency for the fertilizer to rust out the castings of the drill.

### Pickling Beef.

Will you please publish in your paper a recipe for curing beef for summer use. I have pickled pork and it has kept very well during the summer, but I know nothing about the method of handling beef.

SUBSCRIBER.

Ans.—There are several recipes which give fairly good results. They vary somewhat in the amount of salt and sugar used. For 50 lbs. of meat take 2 gallons of water; 4 lbs. of salt; 2 lbs. of brown sugar, and one ounce of saltpetre. Boil for ten minutes, then skim to remove any scum which may rise to the top. Remove from the fire and allow to stand until cold. The pieces of meat should be put in a cask or crock and covered with the brine. It will be necessary to weigh the meat down so as to keep it covered. Should the brine become sour, drain it off, boil and pour back on the meat when cold. It is essential that the brine be kept sweet. Another recipe which varies slightly from the one already mentioned is to each gallon of water add 1½ lbs. of salt; ½ lb. of sugar; ½ ounce of saltpetre, and ½ ounce of potash. These should be boiled together and the top skimmed off; when cold pour it over the meat. It is advisable to sprinkle the meat lightly with saltpetre before putting it in pickle, so as to remove the surface blood. A recipe for corned beef is as follows: Use 8 lbs. of salt to 100 lbs. of meat. Place a layer of salt in the bottom of a barrel sprinkle salt on the meat and put a layer of salt between each two layers and a thick layer on top. After standing for twelve hours add, for each 100 lbs. of meat, a solution of 4 lbs. of sugar, 2 ounces of baking soda, and 4 ounces of saltpetre in a gallon of water. Add enough water to cover all the meat. Watch the meat to see that it is covered with brine at all times.

## 50c. BUTTER

Makes Imperative the Use of an Improved

## DE LAVAL CREAM SEPARATOR

WITH the certainty of the highest prices ever known for butter this winter, no producer of cream can afford to run another month without a modern De Laval Cream Separator.

This is true whether you have no separator, or an inferior make of machine, or even an old model De Laval machine.

The waste of butter-fat is relatively greatest in winter, either with gravity skimming or a poor separator.

At present cream and butter prices, a new De Laval machine will almost surely save its cost within three months, and go on doing so thereafter.

There can surely be no good reason to delay the purchase another week, and if it may not be convenient to pay cash, it may be purchased on such terms that the machine will easily pay for itself.

See your De Laval agent immediately, or, if you don't know him, address the nearest De Laval main office as below for any desired particulars.

### THE DE LAVAL COMPANY, Limited

LARGEST MANUFACTURERS OF DAIRY SUPPLIES IN CANADA. Sole distributors in Canada of the famous De Laval Cream Separators and Alpha Gas Engines. Manufacturers of Ideal Green Feed Silos. Catalogues of any of our lines mailed upon request.

MONTREAL PETERBORO  
WINNIPEG VANCOUVER  
50,000 BRANCHES AND LOCAL AGENCIES THE WORLD OVER



## HOLSTEINS—26 HEAD

CLEARING SALE OF PURE-BRED HOLSTEINS

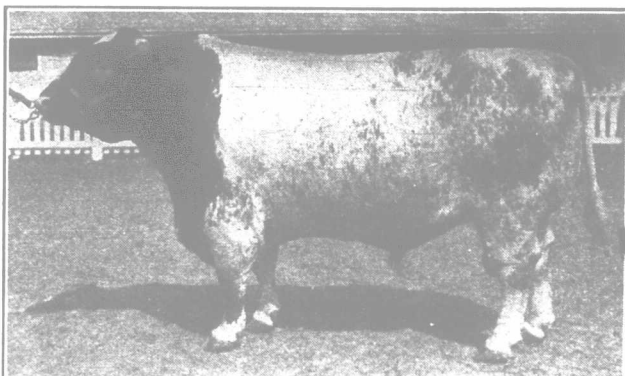
Horses, Hay, Grain and Ensilage. To be held on

**Tuesday, Jan. 2nd, 1917**

at the farm 20 rods from C.P.R. station, **Stratfordville**. Sale commences at 1 p.m.

Herd consists of 23 females of milking age, (fresh milkers and springers) three bulls ready for service. The families of King Segis, and Idalines' Paul Veeman are well represented. Terms:—Eight months on approved notes. 6% discount per annum, for cash. No reserve, as proprietor is going to New Ontario for his health. Write for catalogue.

Auctioneers, **LINDSAY & POUND**  
**CECIL NEVILL, Proprietor**



**GAINFORD MARQUIS Imp.** Canada's Greatest Shorthorn Sire

**Creekside Farm Shorthorns** We have for sale at present, a number of young things by our former herd sire, **Chin Alpine**, (the Claret bred bull by Proud Monarch). We like them, so will you. If it's young bulls, or a few females you need, we would welcome a visit from you. Write or phone, visitors met by appointment.  
**Geo. Ferguson, Elora Sta. C.P.R., G.T.R., Salem, Ontario**

**WILLOWBANK STOCK FARM SHORTHORN HERD**  
Established 1855. This large and old established herd has at the head the two great bulls: Imported **Ross Chief** = 60865 =, a butterfly, and the prizewinning bull, **Browndale** = 80112 =, a Mina. An extra good lot of young stock to offer of either sex. Splendid condition. Good families of both milking strain and beef.  
**JAMES DOUGLAS CALEDONIA, ONT**

**SCOTCH SHORTHORNS**  
We are offering this fall the choicest lot of young herd headers we ever bred, several are of serviceable age, high in quality, rich in breeding. Also a number of heifers.  
**GEO. GIER & SON, WALDEMAR, R.M.D. Grand Valley Sta.**

When writing mention **The Farmer's Advocate**

### Salem Shorthorns

We have at present a real Christmas offering in extra well bred young bulls and a few choice females. The bulls are the best lot we ever offered. Several are by our undefeated herd sire, **Gainford Marquis**, others are by his illustrious son, **Gainford Select**. Two are by the noted champion, **Browndale**, while several others are by the good breeding bull, **Oakland Star**. If you are in need of a herd sire we would like to have you see these. Our females, too, are bred along these same lines. They are right individuals; they are bred right and will be sold right. Visitors welcome.

**J.A. WATT, Salem Stock Farm ELORA, ONT.**

### Cost

The be

### Ste

measure  
They are  
They have  
lift roof-l  
and "A  
cost will  
wood fra

Send f  
"The Ste

The  
Sidi

Preston,

Keep  
Your  
Horse  
and C  
Healt

Prevent d  
and build  
sickly an  
by adding

**Pr**  
**ANIM**  
**REGU**

to the fo  
regulates  
organs,  
into run  
Will giv  
horses, a  
and rich  
pails at  
**Pr**  
and Be  
around t  
bottles,  
P--11 F  
687 C

FOR SA

**SHO**

Royal War

Rosel  
Newt  
exten

H.  
Elmhurst St

### Glenf

Large sele  
from the be  
extra choic  
younger on  
worth the m

**Stewart M**

**MESSRS.**  
**Hickman &**  
**Kent, Engla**

**PEDIG**

of all descript  
Beef and Dair  
Sheep. Illust  
application  
Now is the tin  
better, and ins  
covered by pa

**DUAL-PU**  
Plaster Hill  
fifteen months  
with high reco  
F. Martindal