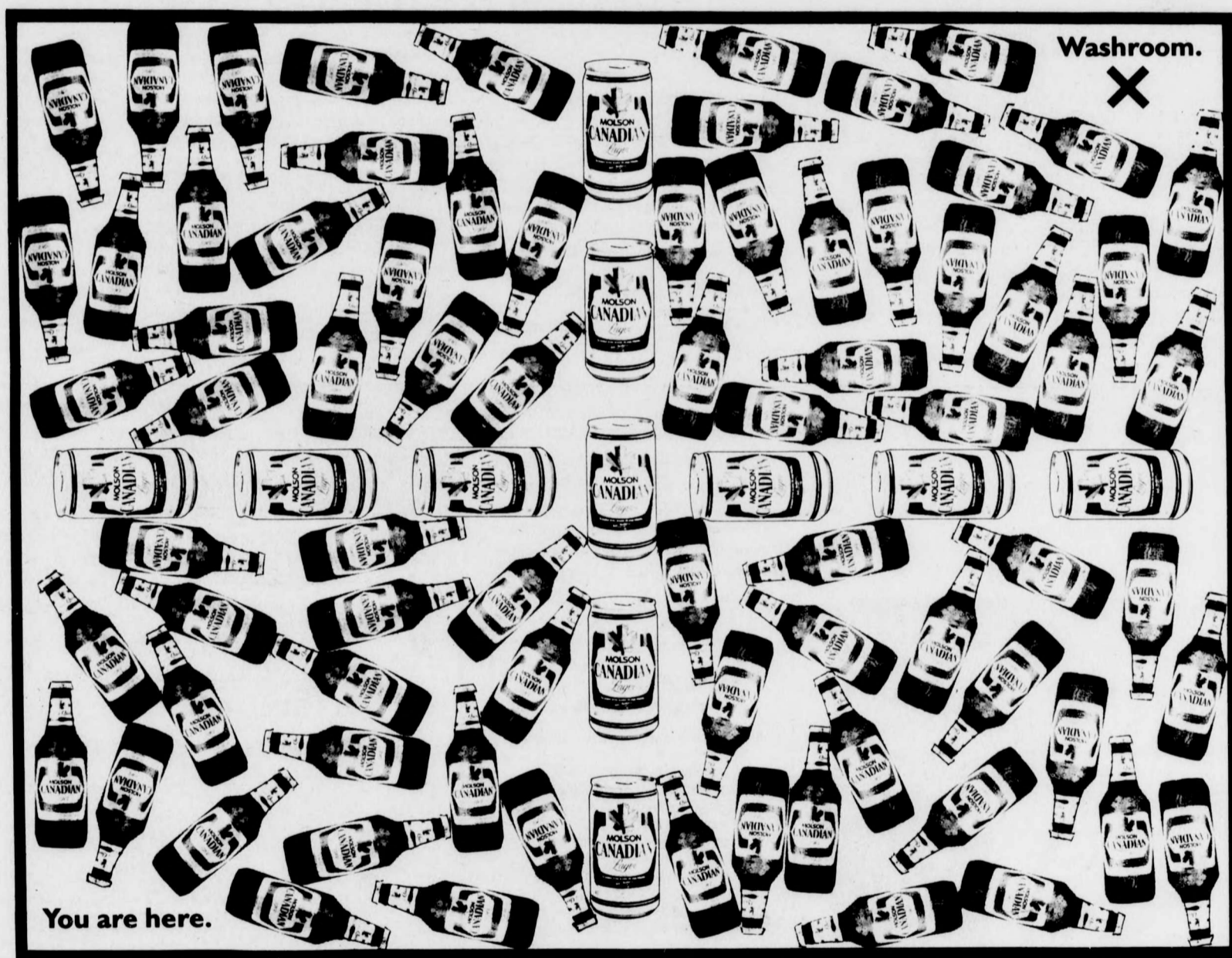


F I G U R E O U T

WHAT IT'S

A L L

A B O U T



S'CUSE ME, EH. Imagine this room is a party. All the bottles and cans represent people at the party. Imagine you're at the party and you really need to use the washroom, but it's on the other side of the room! See how long it takes to get to the washroom without getting stuck. Better hurry, eh.

MOLSON CANADIAN. WHAT BEER'S ALL ABOUT.