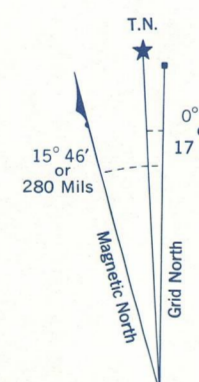
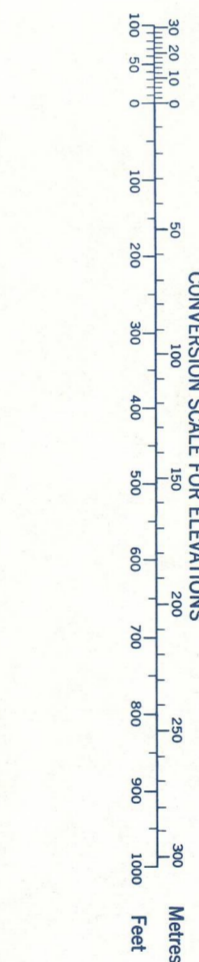
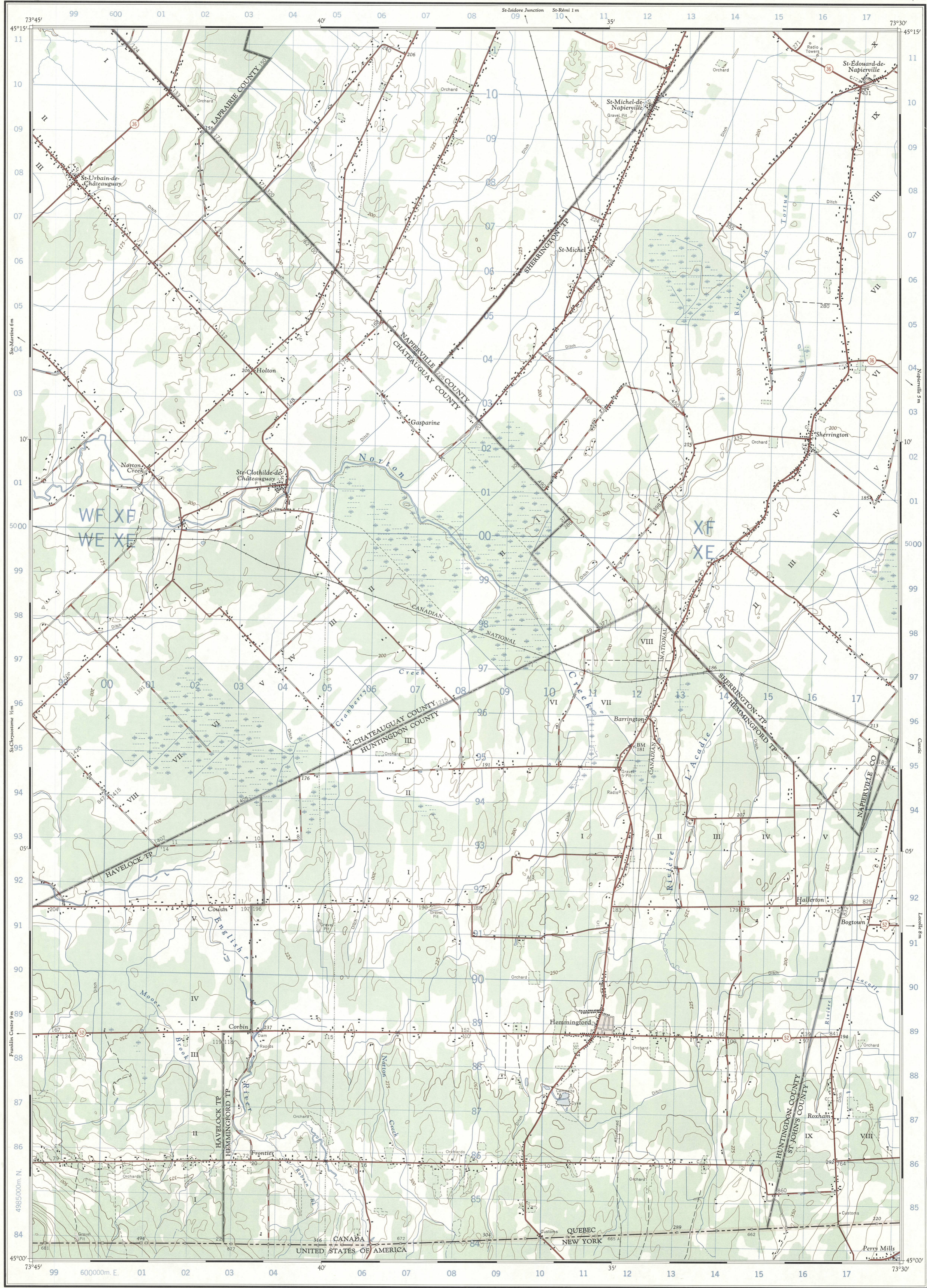


Refer to this map as: 31 H/4 E EDITION 4 ASE SERIES A 761



Use diagram only to obtain numerical values. APPROXIMATE MEAN DECLINATION FOR CENTRE OF MAP 1965. Annual change decreasing 0.6'

Table with 2 columns: GRID ZONE DESIGNATION (18 T) and 100,000 M. SQUARE IDENTIFICATION (WF XF WE XE).

TO GIVE A REFERENCE TO NEAREST 100 METRES. EXAMPLE: RADIO TOWER. EASTING: Road number on grid line immediately to left of point. Estimate tenths of a square from this line eastward to point. NORTHING: Road number on grid line immediately below point. Estimate tenths of a square from this line northward to point. MILITARY GRID REFERENCE: 117943. Nearest similar grid reference 100,000 metres (about 63 miles).

ONE THOUSAND METRE UNIVERSAL TRANSVERSE MERCATOR GRID ZONE 18

Produced 1964, by the SURVEYS AND MAPPING BRANCH, DEPARTMENT OF ENERGY, MINES AND RESOURCES, from aerial photographs taken in 1963. Field surveys 1961 and 1963. Culture check 1964. Printed 1967.

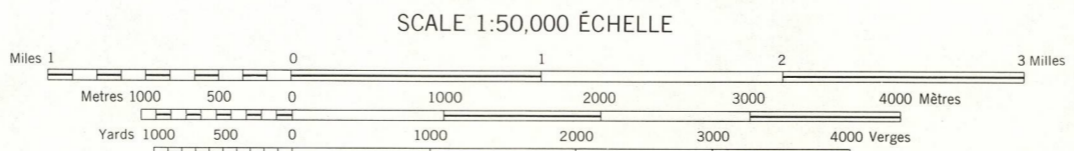
Copies may be obtained from the Map Distribution Office, Department of Energy, Mines and Resources, Ottawa.

ST-CHRYSOSTOME QUÉBEC - NEW YORK

Établi en 1964, par la DIRECTION DES LÉVÉS ET DE LA CARTOGRAPHIE, MINISTÈRE DE L'ÉNERGIE, DES MINES ET DES RESSOURCES, à partir de photographies aériennes prises en 1963. Levés sur le terrain en 1961 et 1963. Vérification des ouvrages en 1964. Imprimé en 1967.

Ces cartes sont en vente au Bureau de distribution des cartes, ministère de l'Énergie, des Mines et des Ressources, Ottawa.

Legend table with 2 columns: Roads (hand surface, loose, stabilized, etc.) and Rivers (single, double, etc.).



CONTOUR INTERVAL 25 FEET Elevations in Feet above Mean Sea Level. ÉQUIDISTANCE DES COURBES 25 PIEDS Élévations en pieds au dessus du niveau moyen de la mer.

Some names on this map are not yet official. Corrections or additions are invited by the Surveys and Mapping Branch. Certains noms inscrits sur cette carte ne sont pas encore officiels. La Direction des levés et de la cartographie saurait gré au public de lui signaler corrections et additions.

Legend table with 2 columns: Building, School, Church, Mine or Open cut, Lighthouse, Power transmission line, River with bridge, Span, Lake intermittent, Marsh or Swamp, Depression contours.

SUPERSEDED EDITION

MCGILL UNIVERSITY MAP COLLECTION MAY 13 1969 GEOGRAPHY DEPARTMENT MONTREAL

TABLEAU D'ASSEMBLAGE DU SYSTÈME NATIONAL 7400 DE RÉFÉRENCE CARTOGRAPHIQUE

Index table showing grid coordinates 31H/5W, 31H/4E, 31H/3W, etc.

INDEX TO ADJOINING SHEETS OF THE NATIONAL TOPOGRAPHIC SYSTEM

ST-CHRYSOSTOME 31 H/4 E EDITION 4 AMS 6274-II SERIES V721