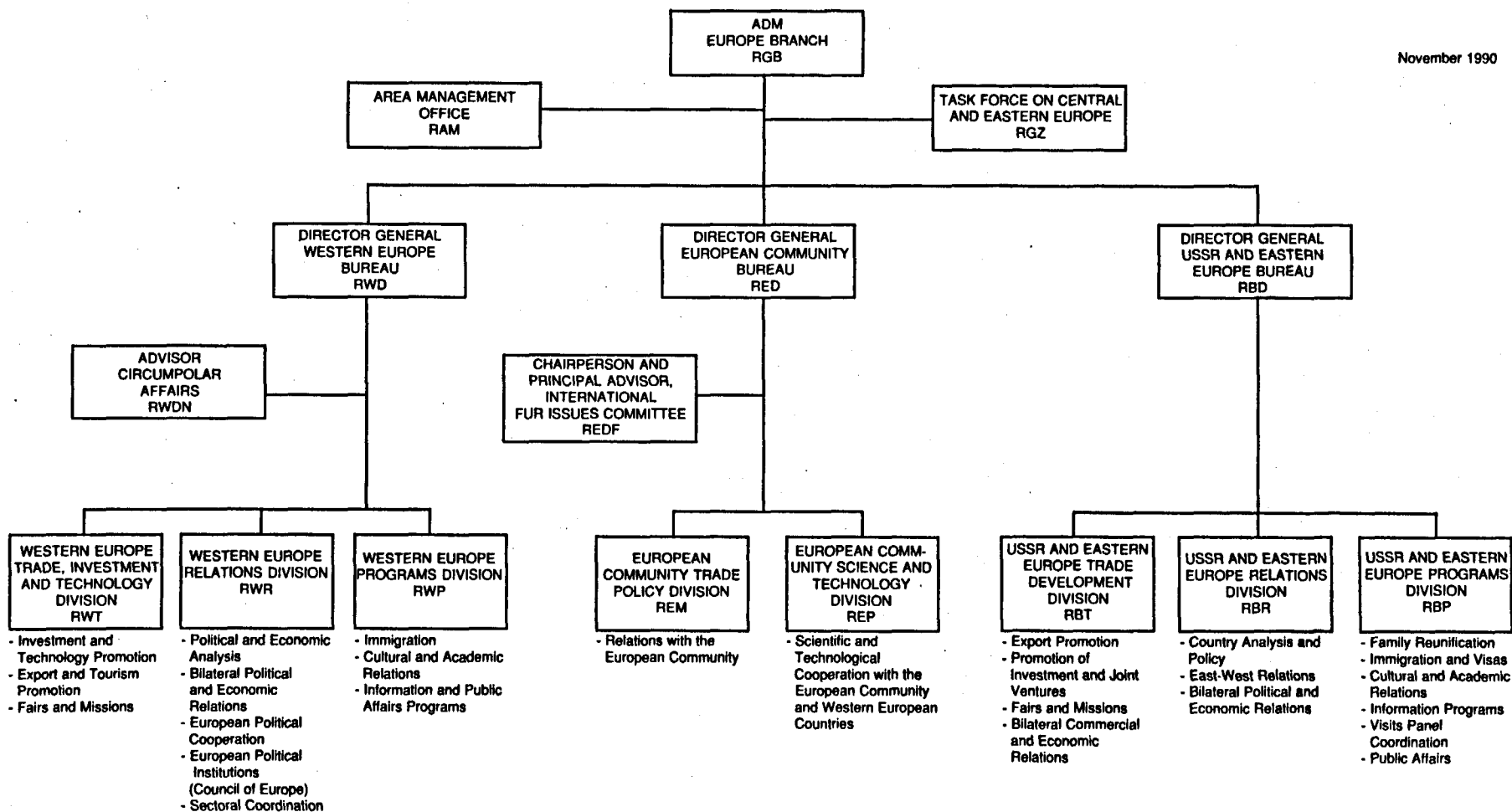


November 1990



France, Italy, Malta, Germany, United Kingdom, EC-Political and Institutional, Council of Europe, Belgium, Austria, Cyprus, Denmark and Greenland, Spain, Finland, Greece, Ireland, Iceland, Luxembourg, Norway, Netherlands, Portugal, Switzerland, Turkey, Vatican.

Albania, Bulgaria, Hungary, Mongolia, Poland, Romania, Czechoslovakia, USSR, Yugoslavia, (Austria / Immigration).