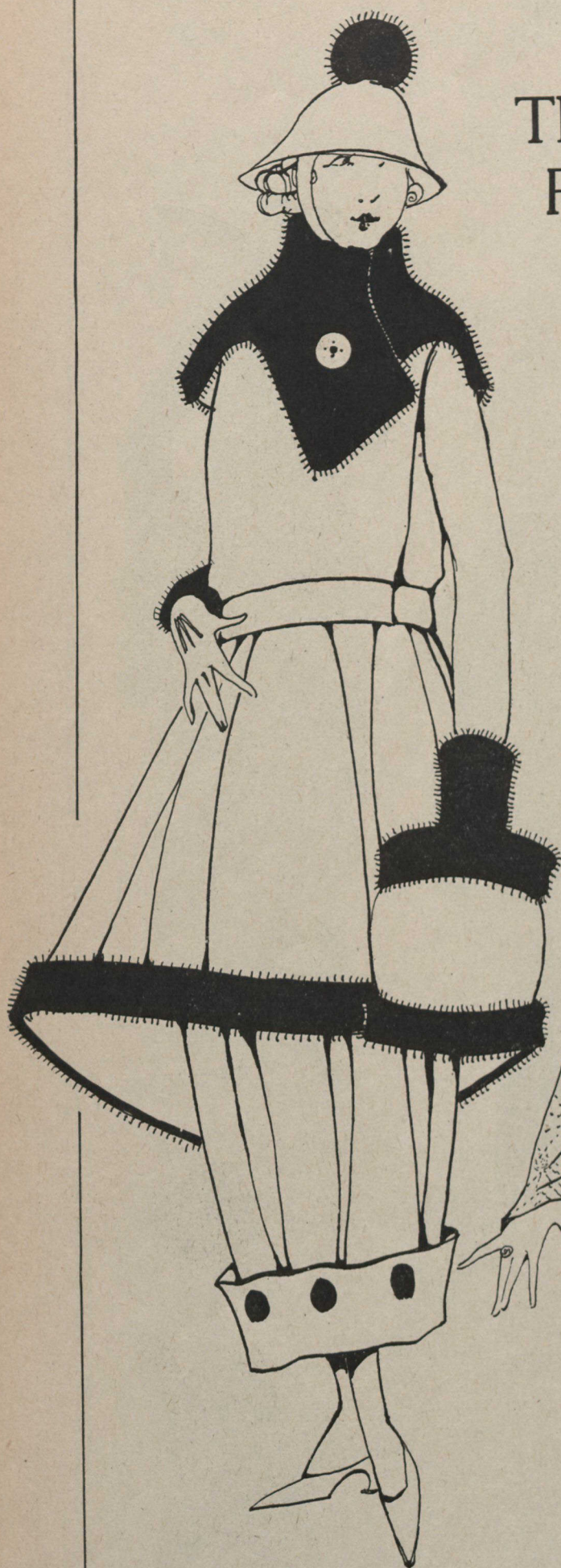


Fashions That Come With Falling Leaves



Evening Dresses are Simple

The new evening dresses which are just making their appearance in Paris may well be taken as indicative of the trend of Fashion, and it is interesting to note the tendency toward simplicity in both fabric and trimming. There seems to be a determined effort on the part of the designers to put a ban on ostentation; if the gowns are cut low in back they are veiled in front and vice versa, and frequently they have a transparent covering over both neck and shoulders.

A charming model is of black satin with the sleeves and upper part of the bodice of tulle. The satin over-drapery on the bodice ends in a point in front at the neck-line, where it is held in place by a necklace of flat jet; the underbodice of dull old-gold net is embroidered in an Egyptian design. The straight skirt hangs from a very low waist-line. The square black satin train, held to the sides of the skirt at the feet by jet ornaments, is loosely tacked at the top to each shoulder, and at the normal waist-line it is slightly bloused; these lines are such as give a very good effect when one walks.



Some Charming Hats

The large mushroom brimmed hat is one of the first of the fall styles. Its underbrim is of black velvet, and the satin on the upper brim and crown is encircled with row after row of the narrowest velvet ribbon to match the satin. A soft velvet ribbon encircles the crown and ties in a bow at the front.

Small shapes of combined materials, tall crowns and assorted Tam-O'-Shanters will all be found in Autumn millinery. One tall hat of black satin has the rakish look of a Dumas hero, the crown can be crushed in any shape most becoming to the wearer. A chic motor hat combines a soft crown of grey and an upturned brim of grey felt closely stitched round and round with grey silk. A jet buckle in front is its only adornment.

Ina E. Puffer