

ton ; Ryan bridge, parish of Eldon, Restigouche county, to G. C. Sutherland, of Bathurst.

LONDON, ONT.—The following tenders have been accepted for annual supplies for the city: Paving crossings and gutters and cedar block crossings, Baldwin & Bldwin; Lumber, Dymont, Baker Lunber Co.; glazed pipe, John Mann & Sons; Portland cement, John Mann & Sons; nails, James Cowan & Co.; iron castings, London Foundry Co.; concrete pipe, E. North.

**THE DOMINION ESTIMATES.**

(Continued from last issue).

**HARBORS AND RIVERS.**

Ontario.—Cobourg, repairs to piers and dredging, \$5,000; Collingwood, harbor improvements, \$25,000; Colpoys bay, extension of pier, \$1,400; Goderich harbor, dredging, \$7,000; Goderich harbor, reconstruction of breakwater and repairs to pier, \$2,000; general repairs and improvements to harbor, river, and bridge works, \$15,000; Hawkesbury, dredging, \$6,000; Lake Temiscamingue, wharfs, \$1,000; Lancaster, wharf, \$3,500; Leamington pier, \$16,000; Meaford harbor, dredging and pile work, \$41,000; Midland harbor, dredging, \$8,500; Owen Sound harbor, dredging and extension of pile protection works, \$8,500; Point Pelee Island, wharf, \$2,500; Port Burwell, improvement of harbor, \$23,000; Port Hope, repairs to piers, \$3,700; Port Hope, dredging, \$5,000; Providence bay, wharf, \$1,300; Rondeau harbor, dredging, \$5,000; Rondeau harbor, to complete repairs to pier, \$10,000; Sheguindah, landing pier, \$3,300; South Nation river, towards improvements at the

Pitch-off, \$5,000; Toronto harbor, works at eastern entrance, &c., \$22,000; Trenton, dredging channel, Murray canal to Central Ontario railway dock, &c., \$5,000; Warton, landing pier, \$4,500.

Quebec.—Baie St. Paul, repairs to piers, \$1,500; Cap Sante, wharf, \$2,500; Carleton, extension of landing pier, \$4,000; Chicoutimi pier, combined freight shed and waiting room, \$1,500; Coteau landing, dredging, \$5,000; Father point, landing pier, \$15,000; Gatineau river, protection work on east side of river, \$1,000; Grande Vallee, pier, \$5,000; general repairs and improvements to harbor, river, and bridge works, \$15,000; Hull, landing pier, \$38,500; Ile aux

Grues, North shore, construction of wharf and purchase of land, \$500; Les Boules, wharf, \$10,000; Lower St. Lawrence, removal of rocks, \$2,000; Magdalen Islands, breakwaters, \$7,000; New Carlisle, repairs to wharf, \$700; Newport breakwater, \$5,000; Nicolet harbor, repairs to

(Continued on page 6.)

**BONDS**

For Permanent Investment

We have purchased, after careful investigation, various issues of Government, Municipal and First Mortgage Electric Light, Telephone and Street Railway Bonds which we now offer, to yield from 3 1/2 per cent. to 5 1/2 per cent.

Send post card for full information to THE CENTRAL CANADA Loan & Savings Company, TORONTO, CANADA.

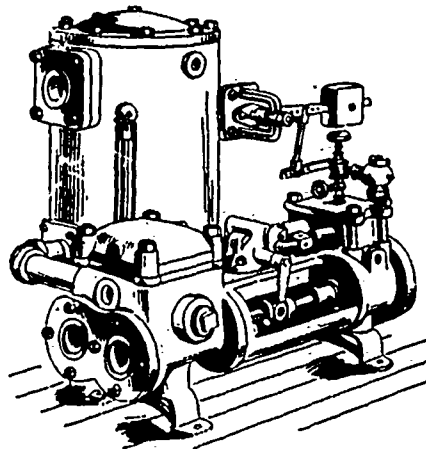
**A. E. AMES & CO.**

BANKERS.

18 King Street East, TORONTO.

Buy and Sell GOVERNMENT, RAILROAD and MUNICIPAL SECURITIES.

**THE NORTHEY AUTOMATIC FEED PUMP AND RECEIVER**

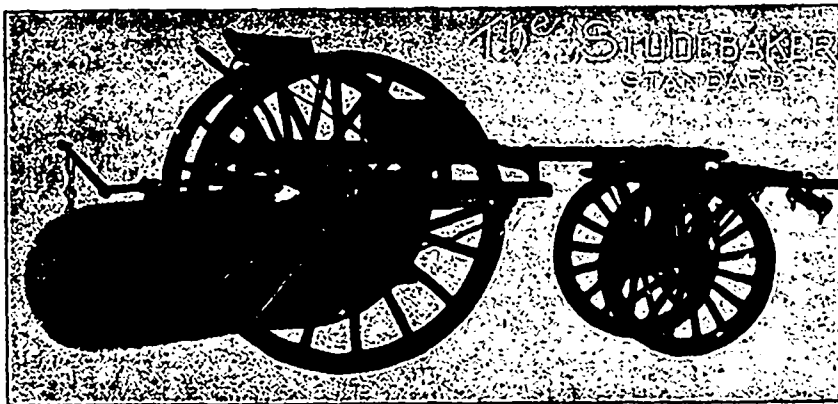


The most successful device in the market for returning water of condensation from pipes and coils of steam-heating systems at the highest possible temperature to the boilers. By keeping the pipes clear for the steam it ensures a quickly operated, noiseless, regular heating service. Takes up little room. A favorite with prominent Engineers and Architects.

Send for New Free Pump Catalog containing designs of Pumps for every conceivable duty. Should be in the hands of every Architect and Engineer.

The Northey Co. Limited TORONTO 1015 King Street, Subway.

**SAYLOR'S PORTLAND CEMENT**  
Has no superior.  
WORKS: COPLAY, PA.  
Western Agency:  
**JNO. MANN & SONS**  
London, Can.  
Write for prices before you purchase.  
Delivery Toronto and all points west.



**Studebaker Sprinkler**

(PATENT IMPROVED.)

Does not clog or get out of order. Greatest width of spray Can be graded from driver's seat to any volume. We also make an . . .

**IMPROVED VERTICAL SPRAY**

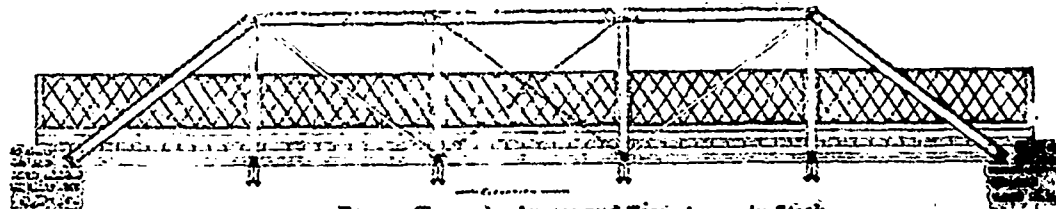
. . . for Pavements

Geo. Heaman, Mfr., London, Ont.

**Street Sweeping Machine**

Because no sweeper so effectually does the work for which it is designed as "The Studebaker." It Sweeps Clean. No sweeper is constructed with the same degree of care and mechanical precision. It Wears Well. "The Studebaker" has the smallest possible number of working parts, and has less scaring than any other sweeper made. It is free from unnecessary complications. With reasonable care it will not get out of order. Send for complete descriptive catalogue.

**THE HAMILTON BRIDGE WORKS CO. LIMITED, HAMILTON, CANADA**  
Manufacturers of . . . **STEEL RAILWAY AND HIGHWAY BRIDGES**



Steel Roofs and Every Description of Steel Lattice and Girder Work

Estimates Furnished on application.

Beams, Channels, Angles and Tees always in Stock