

A SONG OF SPRINGTIME

It is springtime in the orchard and the beauty here displayed,
Presents a glorious picture in this valley God has made,
We note the signs of summer while the trees are blooming out,
And we almost hear their music, as we go around about,
Would that we could catch their keynote in these welcome days of spring,
And join the happy chorus in the glorious song they sing.

O the beauty of their coloring, how it stirs the heart of man,
To breathe their perfumed sweetness, and to note their wondrous plan,
First the bud, and then the blooming, then the setting of the fruit,
While the tree is clothed in beauty in its glossy springtime suit,
Each in turn performs its mission with the harvest days in view,
And goes singing long the journey with a song that's ever new.

Could we not as men and women, (in the purpose here displayed)
Learn the lesson of the springtime, and ne'er become dismayed,
But like the perfumed blossoms now arrayed in such display,
Just keep shedding joy and gladness as we journey 'long the way,
And the Hand that placed the fragrance on the blossom laden tree,
Will not forget to recompense, through all eternity.

—George D. Lee, Yucaipa, California.

THEY TELL THEIR NEIGHBORS

Women Tell Each Other How They Were Helped by Lydia E. Pinkham's Vegetable Compound

Woodbridge, Ont.—"I took Lydia E. Pinkham's Vegetable Compound for female troubles. I would have headaches, backaches, pains between my shoulders and under my shoulder-blades and dragging down feelings on each side. I was sometimes unable to do my work and felt very badly. My mother-in-law told me about the Vegetable Compound and I got some right away. It has done me more good than any other medicine I ever took and I recommend it to my neighbors. You are quite welcome to use this letter as a testimonial if you think it will help some poor sufferer."—Mrs. EDGAR SIMMONS, R. R. 2, Woodbridge, Ont.

In nearly every neighborhood in every town and city in this country there are women who have been helped by Lydia E. Pinkham's Vegetable Compound in the treatment of ailments peculiar to their sex, and they take pleasure in passing the good word along to other women. Therefore, if you are troubled in this way, why not give Lydia E. Pinkham's Vegetable Compound a fair trial.

This famous remedy, the medicinal ingredients of which are derived from roots and herbs, has for forty years proved its value in such cases. Women everywhere bear willing testimony to the wonderful virtue of Lydia E. Pinkham's Vegetable Compound.

FALL FAIR DATES

- Strathroy Sept. 15-17
- WATFORD Sept. 18-19
- Petrolia Sept. 22-23
- Wilkesport Sept. 23
- Sarnia Sept. 24-26
- Brigden Sept. 29-30
- Forest Sept. 30 Oct. 1
- Theford Oct. 2-3
- Wyoming Oct. 2-3
- Florence Oct. 2-3
- Alvinston Oct. 6-8
- Indian Reserve (Sarnia) Oct. 7-8

Children Cry FOR FLETCHER'S CASTORIA

Lam-Buk
HEALING SOOTHING ANTISEPTIC
For Injuries & Skin Troubles

"TOAST"

What an Appetizing Sound that word has—

"TOAST"

TASTES GOOD SMELLS GOOD MEETS EVERY TEST

Of Whole Digestible Food. OUR BREAD IS MADE TO GIVE YOU THE BEST FOOD.

TRY IT AND TOAST IT!

F. H. Lovell

BAKERY & CONFECTIONS

Your ad. on this page would pay!

"Memory brings back the time," remarks the Man on the corner. "When I stood up in Sunday School and sang 'I want to be an Angel' when what I really wanted was to go fishing."

Shrubs For Home Decoration

(Experimental Farms Note).

There are few general rules governing to arrangement of shrubs, which if kept in mind will enable almost anyone to place their plants so that effect will be pleasing.

Shrubbery is necessary to take away the bare appearance so very often noticeable around buildings. They branch low and gracefully and blend naturally into the lawn surface. They can be made into dense and massive groups to close out undesirable views out of buildings, drying yards, and other places it is not necessary to have in view, or they can be arranged in light and graceful groups so as not to conceal beautiful adjacent features. An over-use of shrubbery should be avoided, as the house should not look as though it were in a thicket.

Group planting is more attractive than single specimen planting. Three specimens planted to form a group are more pleasing than the same three plants set singly at different points. The plants in a group are set three to four feet apart, and with no mathematical precision as to location within the group. Five plants of a kind make a good group, and three may be sufficient for many places.

A group made up of one kind of plant is usually more attractive than a group with each plant different. It is allowable of course to have variety by introducing a specimen or two of another kind. If, for example, a group is made up of five plants of bush honey-suckle, one or two plants of Japanese barberry may be used in the front of the group to advantage, but in such planting one kind should predominate. A group consisting of three spruce trees and three pine is not so effective as a group consisting of five spruce and one pine or of five pine and one spruce.

The groups should be arranged so that as much open lawn as possible remains unbroken by the planting. They should be placed at sides and corners of the house, near the entrance, and around the edge of the lawn. Irregular border planting can be had by grouping plants of different character and height along the border. In such planting care should be taken not to shut out desirable views.

The following are suggested as among the most satisfactory:—
Bridal wreath spirea, bloom to last of June. Height 6 to 7 feet.
Tartarian bush honey suckle, bloom middle to last of June. Large pink blossoms. Height 6 to 8 feet.
Mock orange syringa, bloom second week in July. Height 6 to 8 feet.
Japanese rose, bloom first half of July, height 5 feet.
Japanese barberry, height 3 to 4 feet.

Japanese hydrangea, bloom during the latter part of August and early September.
Snowberry, height 5 to 6 feet.
Dwarf late flowering Japanese spirea. The variety anthony waterer is the best. Height 2 feet, bloom early in August.
Weigela eva rathke, this with its red bloom is one of the best of the weigelas.

For taller groups and for screen planting the lilac, of which there are many fine varieties, is the best. The Siberian pea tree, is also satisfactory. For evergreens the pyramidal arborvitae, thread-leaved retinospora, savin juniper and dwarf mountain pine will be found to be among the best.

Women you envy have only this secret



You, too, may employ it to keep the radiance and bloom of youthful skin

Radiant, with the charm of youth still theirs, millions of clever women are admired—and envied!—today.

Yet they have no difficult, hidden secret—no great gift.

Only this simple method—which is for you, too. To give you, as well, the charm you envy in them.

For one week do this

Cleanse the skin regularly, au-

thorities say, to keep your complexion lovely, radiant, youthful. But beware of harsh cleansing methods. They injure skin.

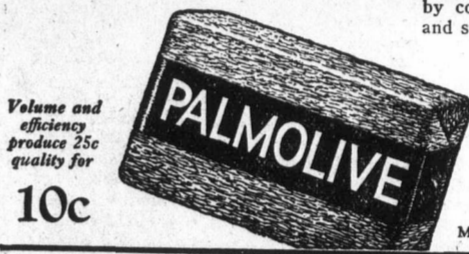
Wash thoroughly with Palmolive Soap—each night before retiring. Rub the creamy, foamy lather well into the tiny pores. Rinse — and repeat the washing. Then rinse again.

Then—if skin is dry—apply a little cold cream. That is all. Skin so cared for is not injured by cosmetics, by wind and sun, or by dirt.

The simple, correct way

You cannot find a more effective beauty treatment. Because Palmolive Soap is blended of rare palm and olive oils—famous for mild but thorough cleansing qualities since the days of Cleopatra. And it is inexpensive, so that thousands now use Palmolive for the bath.

Make sure that you get Palmolive—which is never sold unwrapped. All dealers have it. Get it, and try for one week this simplest of all treatments. See how delightfully and how quickly it benefits your skin.



Volume and efficiency produce 25c quality for 10c

THE PALMOLIVE COMPANY OF CANADA, LIMITED
Winnipeg Toronto Montreal

Palm and olive oils—nothing else—give Nature's green color to Palmolive Soap

MADE IN CANADA

2405

Planting Gladioli

How deep should gladioli bulbs be planted?—Mrs. P. Elora, Ont. Gladioli bulbs should be planted four to six inches deep according to soil texture. If the ground is heavy, it is well to plant a little more shallow than otherwise. These depths are for large bulbs; smaller sizes should

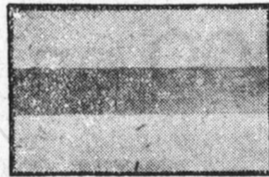
be planted at about three inches deep the ground should be thoroughly dug before planting, and fresh manure must not be allowed to come into direct contact with the bulbs.

The worms that infest children from their birth are of two kinds, those that find lodgement in the

stomach and those that are found in the intestines. The latter are the most destructive, as they cling to the walls of the intestines and if not interfered with work havoc there. Miller's Worm Powders dislodge both kinds and while expelling them from the system serve to repair the damage they have caused.

Cheap Paint? Here is the Answer!

No. 1
(From an actual photograph)
A measure of so called "cheap" paint at \$1.25 per gal., brushed out on wood covered 612 sq. feet.



No. 2
(From an actual photograph)
An equal measure of Lowe Brothers' "High Standard" paint at \$5.75 per gal., brushed out on a similar surface, covered 1,000 sq. feet.



USING an equal measure of each paint, and brushing them out on the same surface, we obtained the results pictured above.

Observe that Lowe Brothers' "High Standard" Paint covered approximately 50% more surface, and covered it better than the so called "cheap" paint.

From this actual test it will be seen that it would take approximately 3 gallons of "Cheap" paint to do a job that would require only 2 gallons of Lowe Brothers' "High Standard" Paint.

Practically applied to a house it would work out this way:—



These houses are both of the same type, and each has a painting area of 2,000 square feet.



To paint this house (2,000 sq. ft.) with "cheap" paint Mr. A. required 6 1/2 gals. at \$4.00 per gal. \$26.00
It takes a painter 1 day to apply 1 gal. of paint therefore to apply 6 1/2 gals. of "cheap" paint it took 6 1/2 days at \$5.00 per day \$32.50
Total cost \$58.50

To paint this house (2,000 sq. ft.) with Lowe Brothers' High Standard Paint, Mr. B. required 4 gals. at \$5.75 \$23.00
A painter can usually apply in a day more Lowe Brothers' High Standard Paint than any other, but figuring on an equal basis of 1 gal. per day, it took 4 days at \$5.00 per day \$20.00
Total cost \$43.00

By using Lowe Brothers' High Standard Paint Mr. B. saved \$3.00 on the cost of paint and \$12.50 on the cost of labor—a total saving of \$15.50 on the complete job.

Never Figure the Cost of Paint by what it costs "per gallon." So-called "cheap" paint is the dearest you can buy measured by "job" cost, which is the only true measure of paint performance.

Before you paint consult us. We will be glad to show you how to paint most economically, and to give you color cards and other information for your guidance.

W. L. McCrae

BRIGHTEN UP NOW FOR "OLD HOME WEEK." SEE US NOW.

EXCLUSIVE DEALERS FOR



Tr follo
Acco Chic
Detro Chic
Onta Chic
Kepp Acco
G. E.
P
W
G
SA
RI
A
HM
Yo Res
studu
our g
suppl
alogu
JAI
L. R. C.
Cor
ford,
Front
Block
C.
Watfo
Reside
hours-
7 to 8
W.
Ontar
rary.
Office
4 an
appoi
GEC
Univel
Dental
Bridge
and P
ods en
teeth.
Store.
G.
Gradu
Dental
Univel
Latest
ances
attenti
Office-
Watfo
V
J.
Surrec
Veteri
special
animal
ciples.
the Gt
Mail
Siddall
J. F.
ser.
Promp
sonabl
the Gt
TY
FAR
I
JOHN
JAMES
ALBEI
THOM
GULF
JOHN
JOHN
J. F. E
ROBEI
ALEX.
P. J. M
W. G.
V
ROY E
Agent