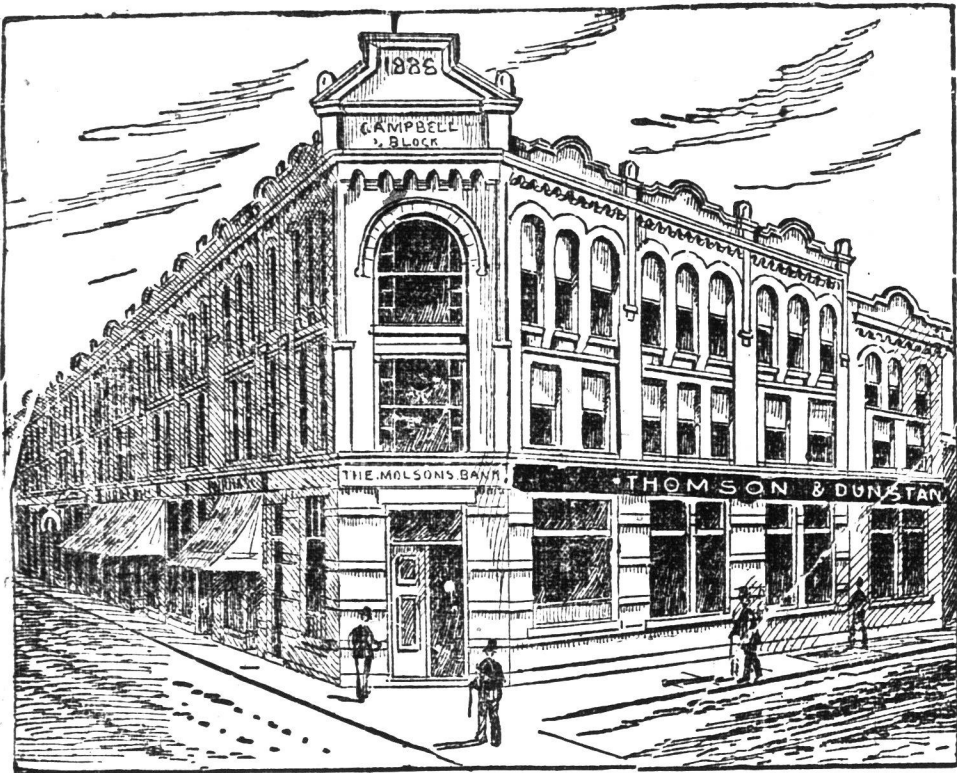


# THOMSON & DUNSTAN

## Real Estate Brokers



WEST TORONTO BRANCH

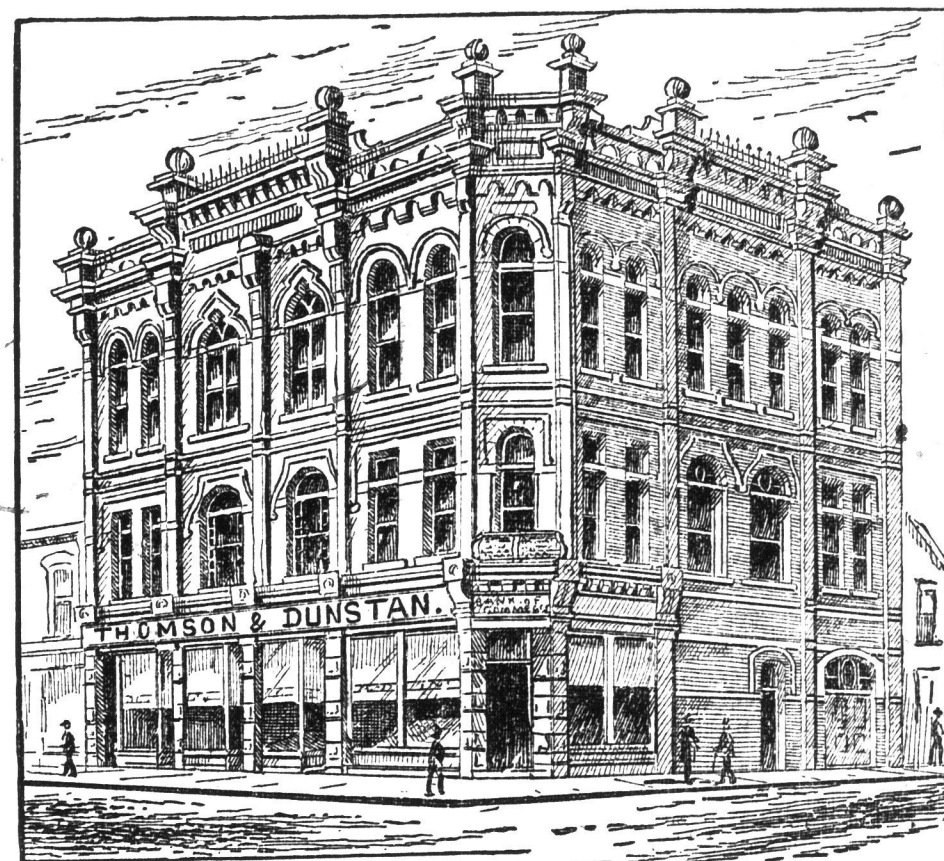


HEAD OFFICE--MAIL BUILDING

Established 1883

\$2,000,000

IN SALES DURING PAST YEAR



EAST TORONTO BRANCH

### LIST

- ALLEN AVENUE--\$9.
- ALDER AVENUE, 100 feet--\$25.
- ALEXANDER AVENUE--\$10.
- ANNETTE STREET, 240 feet--\$25.
- ANNETTE STREET, 70 feet--central--\$25.
- ANNETTE STREET, store and dwelling--\$2500.
- ANNETTE STREET--corner--\$24.
- ARDAGH STREET--\$15.
- BLOOR STREET--\$25.
- BLOOR ST.--\$15.
- CLENDENAN AVE.--\$18.
- CLENDENAN AVE., 150 feet--\$20.
- CLENDENAN AVE.--a beautiful lot--\$70 x 300.
- DURIE ST.--\$10.
- DURIE ST.--\$12.
- DUNDAS ST., 50 feet--\$60.
- DUNDAS ST., 50 feet--\$105.
- DUNDAS ST., 120 feet--\$110.
- DUNDAS ST., 120 feet--\$135.
- DUNDAS ST., 120 feet--\$135.
- DUNDAS ST., 50 feet--\$150.
- ELIZABETH ST.--\$18.
- ELIZABETH ST.--\$19.
- ELIZABETH ST.--\$20.
- FLORENCE AVE.--\$8.
- FAIRVIEW AVE.--\$18.
- FAIRVIEW AVE.--\$19.
- GILMOUR AVE.--\$17.
- GILMOUR AVE.--\$18.
- HENRY ST.--\$10.
- JANE ST.--\$12.
- JOY ST.--\$16.
- KEELE ST.--\$15.
- LOUISA ST.--\$15.
- LOUISA ST.--\$20.
- LOUISA ST., corner, 50 feet--\$30.
- LINCOLN AVE.--\$16.
- LAKEVIEW AVE.--\$23.
- MARIA ST., 250 feet--\$15.
- MURRAY ST.--\$10.
- MURRAY ST.--\$12.
- PEELE ST.--\$10.
- PEELE ST.--\$12.
- QUEBEC AVE.--\$18.
- ROWLAND ST.--\$16.
- ST. CLAIR AVE., 390 feet--\$11.50.
- ST. CLAIR AVE., 100 feet--\$23.
- ST. CLAIR AVE., 50 feet--\$22.
- ST. CLAIR AVE., 200 feet--\$28.
- THOMAS ST.--\$16.
- UNION ST., 120 feet--\$40.
- VINE ST., 100 feet--\$40.
- WILSON PLACE, 50 feet--\$30.
- WILSON PLACE, pair houses--\$4800.
- WOODBURN AVE.--\$18.

J. F. THOMSON.

### LIST

- \$9000--ADELAIDE ST., 56 x 100; good corner.
- \$3000--ADELAIDE ST., 20 x 90; rents well.
- \$60 PER FOOT--Admiral road; 100 feet.
- \$25 PER FOOT--Campbell ave., 400 feet.
- \$40 PER FOOT--Cottingham street, 220 feet.
- \$25 PER FOOT--Dufferin street, 101.
- \$32 PER FOOT--Delaware st., 75 feet.
- \$90 PER FOOT--Huron street, corner Lowther, 114 feet.
- \$20 PER FOOT--Hamburg st., 135 feet.
- \$200 PER FOOT--King street vacant; 200 feet.
- \$30,000--King street--fine block; 51 feet, corner.
- \$35 PER FOOT--Macpherson avenue, 100 feet.
- \$40 PER FOOT--Macpherson avenue, 200 feet.
- \$45 PER FOOT--Macpherson avenue, 200 feet.
- \$75 PER FOOT--Madison ave., 100 feet.
- \$15,000--OLIVE ST., near Don depot, well rented.
- \$20 PER FOOT--Oak street, corner St. Clair, 30 feet.
- \$60,000--QUEEN ST., corner Victoria, well rented.
- \$400 PER FOOT--Queen st., near Victoria, 44 feet.
- \$16 PER FOOT--Radford street, 150 feet.
- \$45 PER FOOT--Roxborough st., 160 feet.
- \$48 PER FOOT--Roxborough st., 200 feet.
- \$50 PER FOOT--Roxborough st., 200 feet.
- \$53 PER FOOT--Roxborough street, 200 feet.
- \$56 PER FOOT--Roxborough street, 150 feet.
- \$60 PER FOOT--Roxborough street, 100 feet.
- \$40 PER FOOT--St. Clair ave., 80 feet.
- \$40 PER FOOT--St. Clair ave., 132 feet.
- \$35 PER FOOT--St. Clair ave., 130 feet.
- \$20,000--SIMCOE ST., with house, 148 feet.
- \$400 PER FOOT--Yonge street, corner Isabella, 92 feet.
- \$11,500--YONGE ST., corner Price.
- \$7000--Yonge street, above Price street.
- \$300 PER FOOT--Yonge street, corner Davenport road.
- \$150 PER FOOT--Yonge street, 252 feet.
- WE HAVE FINE Bay-street Warehouse that pays 5 per cent. net.
- OFFICE BUILDING on Victoria street paying 4 per cent. net.
- BLOCK QUEEN ST. Stores east of York street paying 4 per cent. net.
- BLOCK STORES, QUEEN ST., near Bathurst, north side, paying 3 per cent. net. Best built stores in the city.

SOME MOST DESIRABLE acre blocks for sub-division, on easy terms.

ALSO SOME CENTRAL store properties, paying a very good interest. The land is rapidly increasing in value.

A chance of a lifetime. For full particulars apply to

### LIST

- \$2500 PER ACRE--10 acres of choice property for sub-division; in direct line of proposed Gerrard-street, extension near Coxwell-avenue. Don't miss it.
- 47 ACRES at junction of C.P.R. and Ontario & Quebec R.R. The suburban depot of "Cudmore" is contracted for on this property. This property will give the purchaser a fortune. For particulars and maps apply to Thomson & Dunstan.
- 47 ACRES, running north from Queen-street to Danforth-avenue, known as the Platt Estate. We can sell this at an average price of \$13.50 per foot, and the Queen-street front is today worth \$50. Gerrard-street extension will run through this plot, giving it two important thoroughfares. Thomson & Dunstan.
- 10 ACRES for sub-division on Broadview-avenue, containing some of the most picturesque residential sites in Toronto. Call for full particulars.
- THE FUTURE business block, containing 1176 feet on Gerrard-street, Pape and Carlaw-avenues. Street car terminus, G.T.R. depot, and central. Call for particulars.
- \$22 PER FOOT, about 800 feet of high, level land, with commanding view of Lake Ontario and the city; nothing so cheap in the vicinity.
- \$800 PER ACRE--Salmon-ave., 10 acres; a sure investment.
- WE HAVE a few choice water frontages still for sale on Ashbridge's Bay, after a heavy run. First come, first served; in this grand field for speculation.
- WE OFFER in this list the most valuable business site east of the market, the northwest corner of Broadview-avenue and Queen-street--\$240 per foot. It will never be bought at this price again.
- BROADVIEW AVE., cor. Spark-dale-avenue. Here is the chance to double your money, the speculators' corner, Broadview, 850 (corner) and Sparkdale \$25; nothing like it.
- BRIGHTON AVE., two brick-fronted houses--\$3000.
- BROOKLYN AVE.--\$23.
- BIRTLA AVE.--\$16.
- BROOKE AVE., cheap--\$22.
- BOLTON AVE., corner Cummings street, 100 x 100 feet, and cottage carries itself, a chance--\$3500.
- CYPRESS AVE., near Broadview--\$122.
- CYPRESS AVE., corner Broadview, a beautiful spot for a residence--\$70.
- DANFORTH AVE., corner Ross--a bargain--16.
- DANFORTH AVE., near Logan-avenue, cheap--\$25.
- EASTERN AVE., corner Booth, a good location--\$35.
- EASTERN AVE., near Booth, a good investment--\$32.
- GERRARD ST., near Jones, very desirable--\$23.
- GERRARD ST., corner Broadview, a grand store site--\$50.
- QUELPH AVE., for residence--\$20.
- HAMPTON AVE., near street cars--\$25.
- HERBERT AVE., close to Woodbine, cheap--\$15.
- LOGAN AVE.--Look, near Gerrard--\$23.
- LANGLEY AVE., best residential street--\$33.
- LESLIE ST., corner Doel. Don't miss it--\$25.
- MORSE ST., two houses cheap--\$2500.
- PAPE AVE.--\$18.
- PAPE AVE.--\$25.
- QUEEN ST., near Pape, a chance--\$30.
- QUEEN ST., corner Leslie, a bargain--\$60.
- SMITH ST., corner Logan--\$30.
- SMITH ST.--very cheap--\$27.50.
- SPARKHALL AVE., cheapest property east--\$25.
- VICTOR AVE., corner Howland, rare--\$30.
- VICTOR AVE., near Broadview--the opportunity--\$30.
- WITHROW AVE., corner Broadview, good--\$70.
- WITHROW AVE., corner Logan, a capital investment--\$23.
- WITHROW AVE., near Pape--\$24.
- WILSON ST., beautifully situated and low prices--\$22.
- WHITNEY AVE., county taxes--\$18.
- WILSON ST., good value--\$30.
- BEE ST.--\$6.
- CRONYN AVE.--\$8.
- GAMBLE AVE.--\$10.
- LESLIE ST.--\$8.
- TORRENS AVE.--\$7.

GEO. DUNSTAN.

# THOMSON & DUNSTAN

Real Estate Brokers, Valuators, Renting and Loans

WEST BRANCH: West Toronto Junction,  
CAMPBELL BLOCK,  
ARTHUR MEREDITH, Manager.

HEAD OFFICE:  
MAIL BUILDING,  
TELEPHONE 1327.

EAST BRANCH: 796 Queen-street East.  
TELEPHONE 2096.  
EVELYN MACRAE, Manager.