

## A Great Advantage "SPLITS" OF Apollinaris

Are now supplied by Western Dealers.

APOLLINARIS is bottled ONLY at the Spring, Neuenahr, Germany, and ONLY with its own NATURAL GAS.



And we invite you to ride. The motor power is contained in the exceptionally reasonable prices we ask for our high quality of goods. If you want to figure for yourself—the saving it means to you to buy your table Provisions here glance through the list below.

**CRAWFORD PEACHES**—Finest freestone, preserving or table peach, on sale, per 20 lb. crate ..... \$1.25  
STORE will be closed Monday next, Labor Day.

**FREE DEMONSTRATION**—All this week Miss Wallace will give a demonstration of McLaughlin's Imperial products, consisting of Peanut Butter, Cheese, Prepared Mustard, Jellies, etc. You are cordially invited to call in or order, per quart, these at the demonstration booth.

**NEW B.C. POTATOES**—On sale per bushel ..... \$60  
**BLACKBERRIES**—Fresh, daily, per box ..... \$1.50  
**SWEET POTATOES**—Our first direct shipment from the south per lb. .... \$1.50

**CALIFLOWERS**—Choice, arriving daily, on sale, 2 lbs. .... \$2.50  
**PICKLING ONIONS**—Small white silver, on sale, 2 lb. .... \$2.50  
**VINEGAR**—Extra good grade for pickling or other purposes. Malt, white wine, or cider, per quart ..... \$1.50  
Per gallon ..... \$5.00

**PICKLING SPICE**—Special mixture, 4 oz. .... \$1.00  
Per lb. .... \$3.50  
**PRESERVING PEARS**—Choice Bartlett, on sale, per 40 lb. crate ..... \$2.50  
**PRESERVING PLUMS**—(Italian prunes), on sale per 20 lb. crate ..... \$1.25

**FLOUR**—Best of Alberta, 24 lb. sack ..... \$1.00  
49 lb. sack ..... \$1.50  
98 lb. sack ..... \$3.65  
**FLOUR**—Robin Hood, 24 lb. sack ..... \$1.00  
49 lb. sack ..... \$1.50  
98 lb. sack ..... \$3.75

**COMB HONEY**—Fresh shipment just arrived, per comb ..... \$3.00  
**GREEN PEPPERS**—Nice fresh green peppers, per lb. .... \$1.00  
**MAPLE SYRUP**—From Quebec, medium size cakes ..... \$1.50  
Larger size, per cake ..... \$1.00

In our Meat Department, you will find the very best meats at the following prices:  
**HIND QUARTERS** of Spring lamb, per lb. .... \$2.40  
**FORE QUARTERS** of Spring lamb, per lb. .... \$2.00  
**GOOD LEAN MUTTON CHOPS**—Per lb. .... \$2.00

**BEST LEG MUTTON**, 16 ..... \$2.00  
**SHOULDER OF MUTTON**, 16 ..... \$1.80  
**FOREQUARTER OF MUTTON**, per lb. .... \$1.50  
**STEWING MUTTON** ..... \$1.00  
**FILLET VEAL**, per lb. .... \$2.30  
**SHOULDER ROAST VEAL**, per lb. .... \$1.50

**VEAL CHOPS**, per lb. .... \$1.50  
**STEWING VEAL**, per lb. .... \$1.50  
**LEG OF PORK**, per lb. .... \$2.20  
**GOOD PORK CHOPS** ..... \$2.00  
**FRESH SAUSAGE**—Our own make, per lb. .... \$1.25  
**BEST LOIN PORK CHOPS**—Per lb. .... \$2.10

**LOIN PORK ROAST**, 16 ..... \$2.10  
**PRIME RIBS OF BEEF**, 16 ..... \$1.80  
**BEST SHOULDER ROAST BEEF**, per lb. .... \$1.50  
**LEAN POT ROAST**, 16 ..... \$1.25  
**LEAN STEWING BEEF**, 16 ..... \$1.00

**BEST SHOULDER STEAK**—Per lb. .... \$1.50  
**ROLLED RIB ROAST**, 16 ..... \$2.00  
**HAMBURGER STEAK**, 16 ..... \$1.25  
**CHOICE SUGAR CURED BACON**—Per lb. .... \$2.30  
**CHOICE SUGAR CURED HAM**—Per lb. .... \$2.50

**COOKED MEATS**  
**FINEST COOKED HAMS**—Per lb. .... \$1.50  
**JELLIED TONGUE**, 16 ..... \$1.40  
**VEAL LOAF**, per lb. .... \$1.40  
**CHICKEN LOAF**—Per lb. .... \$1.40  
**CORNERED BEEF**, 16 ..... \$1.35  
**OX TONGUE**, 16 ..... \$1.30  
**JELLIED VEAL**—Per lb. .... \$1.40  
**HEAD CHEESE**, 16 ..... \$1.35  
**JELLIED LIVERS**—Per lb. .... \$1.35

In our Fish Department, we expect the first of our daily direct shipment of fresh oysters from the east today.  
**STEAK HALIBUT**—Per lb. .... \$1.25  
**STEAK COD**—Per lb. .... \$1.25  
**STEAK SALMON**—Per lb. .... \$1.25

**DELIVERIES TO SUBURBS**  
Special deliveries are made to most suburbs every Monday, Wednesday and Friday afternoon. Orders to go on these deliveries must be in by 1 p.m. on day of delivery.

**S. G. FREEZE**  
Distributors of Fine Groceries, Fresh Meats, Poultry, Fruit and Provisions  
233A Eighth Avenue East, Calgary, Canada  
Phones 3667, 3668 and 3559

## SOUTH AFRICAN TAXPAYERS FACE PROBLEM

Public Expenditures Mounting  
Up and Defence Scheme  
Looming Ahead

Falling Drastic Retrenchment  
Country Will Face Deficit  
of \$8,750,000

Cape Town, Aug. 29.—With public expenditure mounting, and additional commitments, such as the defence scheme, looming ahead, the outlook for the taxpayers of the Union of South Africa is not of a very cheerful character. It is predicted that, falling drastic retrenchment, the country will next year be faced, on the basis of the existing revenue, with a deficit of something like \$8,750,000. Reviewing the situation, The Cape Times remarks that the outstanding fact which country would do well to bear in mind and to impress upon its representatives in the various constituencies is that the present scale of expenditure in the Union is very largely in excess of the capacity of the revenue from existing sources to meet it. Last year the expenditure incurred was \$8,100,000. During the current year a budget exceeding this amount by nearly \$2,500,000 is estimated.

**Situation Critical**  
"No doubt General Smuts will follow the excellent example of his predecessor, who issued last year at the close of the session a circular enjoining the strictest economy in all departments, with results which were satisfactory. But the country must be under no illusions. The situation is: The third year of the Union's critical existence will be available. If we assume that ordinary revenue and ordinary expenditure are on the same scale during next year, the country will have to face increased taxation to the tune of some \$6,700,000 in order to make both ends meet. The alternative is heavy retrenchment in every direction.

**Defence Scheme**  
"The capacity of the country to bear increased taxation need not in present circumstances be argued, but before taxation is imposed the government must make clear the case which would alone justify an increased burden on the taxpayer, and must prove that the public expenditure is the lowest scale compatible with efficiency. Next year the country will be called upon to face a heavily increased burden in the way of the defence scheme, which will begin to operate with full effect on January 1, and this additional expenditure, the amount of which has never yet been stated, but which will certainly involve an additional annual outlay of from \$2,000,000 to \$2,500,000, must be added to the prospective shortfalls of \$6,700,000 which we have already referred. Next year, in fact, on the basis of present expenditure, and with the additional cost of defence, there will be a deficit of getting on for \$10,000,000 between revenue and expenditure—and on the wrong side. We state the facts in the belief that the pressure of public opinion during the recess may bring the government to realize that its present methods of happy-go-lucky finance cannot continue if the credit of the Union is to be maintained."

**Botha Makes Reply**  
In his recent speech at Riverdale, General Botha took occasion to reply to criticisms passed in the house of commons on the effect of capital on the Union government's taxation proposals. "I have read the debate," he said, "with great regret, and I think that every friend of the British empire will share the regret. It was said that we desire to prevent capital from coming into South Africa, and I must say that I have never heard any more ridiculous talk. Are we, the population of South Africa, such fools that we should wish to cut our own throats, and have we not shown in the past that we want to get capital into the country to develop our industries and our resources? My government and parliament will never consent to have legislation introduced to prevent the influx of capital. On the contrary, we shall do everything to encourage capital coming into the country, because we feel that there is room for ample development in South Africa, which cannot be achieved by any more industrialization started and have the country developed in every possible direction. "What the fact of our taking steps to impose a reasonable share of taxation on the people who make a lot of money out of South Africa have the effect of stopping the influx of capital? Surely not! But I wish to say this: If in any other part of the world people think that we by our legislation are treating the situation as if it were a game, I can give them the assurance that the government has a sympathetic ear for their grievances if they will bring those grievances before us in the right place."

**DUTCH GOVERNMENT SEEKS  
NEW SHIPPING LAW**

London, Aug. 29.—On what may be described as great authority it is stated that the Dutch government have decided to convene at an early date a conference of the Powers in order to plan and enforce a universal shipping law, i.e., uniform measure and regulations for ensuring the safety of ships, crews, passengers, and cargoes. The idea has arisen from the wreck of the Titanic and other disasters, showing that if similar precautions and similar means of rescue were adopted all the world over, such calamities would be considerably reduced in number and consequences, or perhaps prevented altogether. The Hague being the centre of the unification of peace arbitration, and other international law-making, it has been suggested that the Dutch government that no place is so well equipped for the elaboration of maritime rules of the kind.

**Shortage of Army Horses**  
The present training of the Territorial forces has brought to light in no uncertain fashion the serious shortage in army horses. Nine field batteries now on Salisbury Plain cannot obtain the requisite number of animals, and one London brigade have had to postpone their training for a fortnight as no horses were available. One contingent has overcome the difficulty by borrowing from one another, and a major in command of a Nottingham regiment has, at his own expense, equipped his men with a sufficient number of horses.

## Original Fall Styles

YOU will find our showing of Coats and Suits the most authoritative style display in the city. Values are uniformly of the highest class. Can you appreciate the difficulty of the writer in attempting to describe hundreds of new Fall Suits and Coats of both the strictly tailored and fancy tailored types. You must see them for yourself, the task of description is almost impossible.

In Suits we have Dame Fashion's latest decree, of course the strictly plain tailored models are again much in evidence, also the more elaborate models in novelty fabrics are represented here more completely than ever before, many new weaves are here in diagonals, worsteds, cords, homespuns, etc.

Novelty lines are extensively employed in fancy tailored suits, the cutaway with braid edges and cuffs is very noticeably smart.

The coats of which we received a large shipment (from a leading New York manufacturer) yesterday are beautiful specimens of the Tailor craft, the fabrics are more beautiful than ever, lovely double faced Chinchillas, heavy Scotch and English mixtures and tweeds, there are some very beautiful color combinations, such as King's blue and Old Gold, Smoke Grey and Wine shade, etc.

To fully appreciate our elegant showing, you should come and look and try on for yourself.

## Last Call for Summer Suits \$30 to \$45 Suits for \$15.00

Elegant suits, many of which are heavy enough for Fall wear; we have several whipcords, tweeds and suitings, the price quoted is not the cost of making, but we must have the room for fall goods. Special ..... \$15.00

**JABOTS AND COLLARS** for 25c Each  
Sailor Collars and Jabots of lawn and lace, in white and ecru. These are worth 35c to 40c each. Special today and tomorrow, each ..... 25c

**NECKWEAR FOR 75c EACH**  
A quantity of Neckwear, in embroidery and lace collars and jabots, both in straight and side jabots; also some in the bebe Irish lace jabots. The collars we have in both square and round. These we sold regularly at from \$1.00 to \$2.25. Special today and tomorrow ..... 75c

## White Wash Gowns, \$6.50

Regular up to \$13.50

The remains of our White Lingerie and Cotton Corduroy Gowns, we have been selling all season from \$10.00 to \$13.50. Special today and tomorrow only ..... \$6.50

We have still a few of our New York model Linen Gowns left, which we must clear regardless of cost:

Regular \$13.50, for ..... \$7.50  
Regular \$15.00 to \$20.00, for ..... \$10.00  
Regular \$20.00 to \$25.00, for ..... \$14.75

## BASEMENT ECONOMIES

Petticoats for \$1.50—We have a quantity of dainty White Petticoats, profusely trimmed with lace and embroideries. These garments are all perfect stock. Regular \$1.90 and \$2.00 quality. Special today and tomorrow ..... \$1.50

**Tailored Silk Waists \$3.00**  
A plain man-tailored Waist, made of good quality silk, in shades of light and dark brown; two shades of reseda, two shades of navy, set in sleeves and double collars. Regular \$4.75. Special today and tomorrow ..... \$3.00

**Waists for \$1.25**—White Lawn sailor styles, with navy or cadet blue collar and cuffs, navy with white dots and white collar and cuffs, also white lawn with embroidery and lace fronts. Regular \$1.90 to \$2.00. Special today and tomorrow ..... \$1.50

**White Lawn Aprons, 75c each**  
—A large size, embroidery trimmed, many pretty designs. Regular 95c and \$1.00. Special today and tomorrow, each ..... 75c

**Ladies' and Children's Underwear, vests and drawers,** with long or short sleeves or without sleeves at all, summer weight, in white and natural. Special today and tomorrow, per garment, 15c, 20c, 25c, 30c and ..... 35c

**Combinations, 40c Garment**—Ladies' Combination Underwear in white only, extra fine quality. Regular 50c. Special today and tomorrow, garment ..... 40c

**Combinations at 75c Garment**—Women's fall weight combinations, long sleeves and ankle length, excellent value. Special today and tomorrow, pair ..... 75c  
Also over sizes at, pair \$1.00

## Three Hosiery Specials

**Heavy Hose for 15c pair**—A good strong union, 2 and 1 rib Hose for fall wear; all sizes, 6-12 to 9-12. Special today and tomorrow, pr 15c

**Ladies' Hose for 15c pair**—Clear line of Ladies' Colored and Black Cotton Hose, in stripes and dots. Regular 25c. Special today and tomorrow, pair ..... 15c

**Ladies' Hose for 35c Pair**—In tan and black, a good lisle thread, with lace ankle. Regular 35c; sizes 8-12 to 10. Special today and tomorrow, pair ..... 25c

## Gloves Underpriced

**Long Lisle Gloves, 35c pair**—18 to 20 inches long, in tan, fawn, navy and black; also chambrasse, in broken sizes only. Regular up to 50c pair. Special today and tomorrow, pr 35c

**Cape Walking Gloves, \$1.00**—Ladies' Heavy Cape Kid Walking Gloves, with one dome fastener, sizes 6 to 7 1/2. The best value ever offered in a kid glove. We got a great price concession by buying a large quantity. This glove was never sold less than \$1.25 before. Special today and tomorrow, pair ..... \$1.00

## B.C. BINNING & CO.

112 EIGHTH AVENUE EAST

## MAIL TRAIN WAS ROBBED BY RAVING MANIAC

Remarkable Revelation Follows  
Investigation Into Extraordinary Crime

Wanted to Buy Menagerie and Become Famous as Wild Animal Trainer

Paris, Aug. 27.—Eight months of inquiry into the sensational robbery of the Indian mail train between Paris and Dijon, on the night of Nov. 16 last, has proved that the extraordinary feat, which it was supposed, only a thoroughly organized band could accomplish, was committed by a single man, a single-handed. The express, which left the Gare de Lyon in Paris at 8.35 p.m., consisted almost exclusively of mail vans. Three of them were broken into while the train was going at a speed of sixty or eighty miles an hour. About 100 mail bags were ripped open, bonds and scrip of various descriptions were stolen, and a certain amount of cash disappeared. Suspicion fell on a former postal employee named Bazencourt, who was traced to Belgium, and who was arrested as he was trying to negotiate some of the scrip, on which he had made clumsy forgeries and changes. He was extradited, and in the course of the examination it was learned that he had been discharged by the postal authorities on account of his eccentricities. There was a suspicion that he was not entirely sane.

## WHERE FOOT OF WHITE MAN NE'ER TROD BEFORE

Word Received From Bridgeman, Explorer of Interior of Labrador

Land of Surpassing Beauty; Delighted With Saint Augustine River

New York, Aug. 28.—Herbert L. Bridgeman, of Brooklyn, announced today that he had received a telegram from Henry G. Bryant, President of the Philadelphia Geographical Society, giving the first news of Mr. Bryant's exploring trip in Labrador.

Mr. Bryant left this city on June 22 last, and St. Augustine, Labrador, on July 12, for a reconnaissance in a part of Labrador never before travelled by a white man. He returned to St. Augustine on Saturday and the following telegram was received today by Mr. Bridgeman:

"Aug. 28, 1912.  
"Arrived today. The expedition was fairly successful. Am the first to explore and map the St. Augustine river from its mouth to its source, a distance of 141 miles.  
"We travelled a region fairly timbered, but unsuited to agriculture.  
"The scenery of the central plateau of Labrador is of surpassing beauty. Our provisions were ample. The Indians deserted after four days, but we successfully made two-thirds of the distance to Hamilton, when we were obliged to return, owing to the serious condition of one of the Newfoundland canoe men, who had injured a leg in running the rapids.  
"His disability increased the hardships of the portage, the longest and most difficult in all my experience.  
"The topographical results are important and will essentially change the maps of the river. This and the geological specimens and photographs pay me for the disappointment that I was unable to explore the southeastern part of the Labrador peninsula."  
"Russell Porter, of Port Hope, was the topographer of Mr. Bryant's expedition, which included canoe-men from Newfoundland and Indian guides."

## SPY MANIA INDICATIVE OF NATION'S NERVOUSNESS

London, Aug. 28.—A West-end doctor, referring to the spy mania which seems to have broken out, states that it is simply a manifestation of a nation's nervous system being out of order. "Just as suspicion of people may become a disease in an individual, so it can affect a whole nation. The worst of it is that, like some other troubles, such as measles, it is difficult to stamp out. Hypochondria is closely allied to suspicion, and the nation or individual who is suspicious is generally tending towards hypochondria. The same law which applies to a man applies to a nation in this matter."

## LEST YOU FORGET

All copy and changes for insertion in The Albertan must be in The Albertan office as follows:

Not later than midnight	For insertion
Friday	Monday
Saturday	Tuesday
Sunday	Wednesday
Monday	Thursday
Tuesday	Friday
Wednesday	Saturday
Thursday	

A proof will be delivered to the advertiser the afternoon before publication when requested.

## "It Costs No More"

TO TRAVEL VIA

EDMONTON

And

TO  
SASKATOON, WINNIPEG and EASTERN CANADA

Electric lighted sleepers with reading lamps in upper and lower berths. Electric lighted diners. Smooth roadbed, polite employees.

Tickets, rates and full particulars from

**NIBLOCK and TULL, Ltd.**

CITY PASSENGER AGENTS  
Grain Exchange Bldg. Calgary, Alta.  
OCEAN TICKETS

## C. P. R. MAKE MANY IMPROVEMENTS

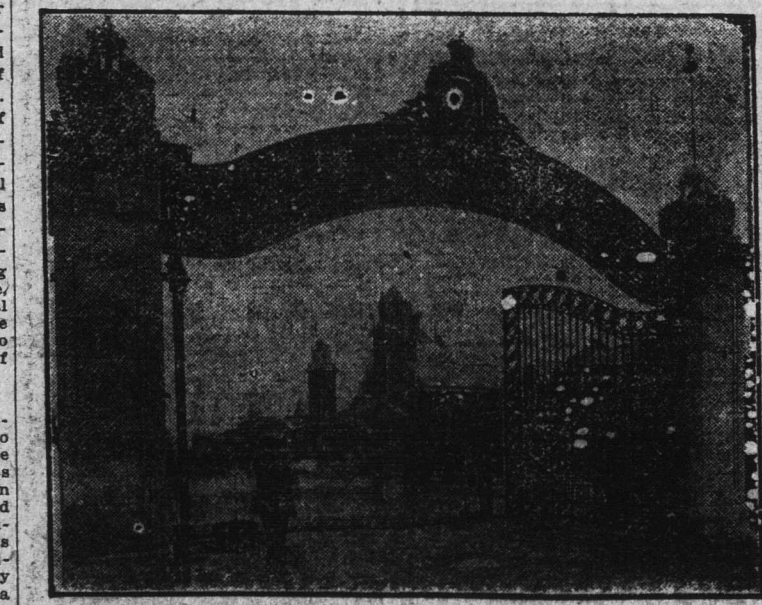
Lacombe, Aug. 29.—The C. P. R. has a large scale of improvements in Lacombe at the present time, carrying out the programme of improvements decided on by the company this spring.

The freight sheds are now being erected on Minto street, and will be ready for occupancy in a few days. The great amount of business transacted at Lacombe has made the necessity of more trackage apparent for years, and at long last the company has got to work on the extensions. No less than five tracks will be put down on the town side of the main line.

Four of these will be for freight, while the other will be used by the express, that train, as soon as the track is completed, coming in on the north side of the present passenger platform. The platform at the depot will be extended a couple of hundred feet east to accommodate the express trains from the branch.

The new switches will make it much easier for the transfer companies and business men generally. Instead of having to cross the main line and wind in and out among the tracks to unload their cars, there will be a special siding for Lacombe freight on the town side.

The C. P. R. in general with every one else, knows that Lacombe is going to start growing soon, and is preparing for the rush.



DUFFERIN MEMORIAL GATE—A stinging monument at the entrance of the Canadian National Exhibition, Toronto, to Lord Dufferin, former Governor-General of Canada, and patron of the exhibition.