

## SIMPLE RELIABLE DURABLE



*The "Midland"*  
Hoisting Engines  
combine all these  
qualities and  
a good many  
more.

Good Goods  
Prompt Delivery  
Fight Prices

SEND FOR CATALOG

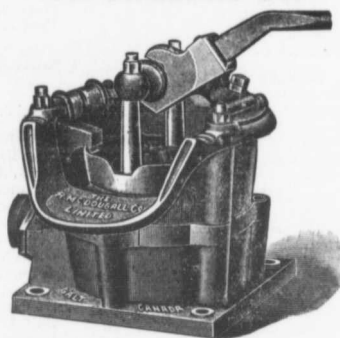
**Georgian Bay Engineering Works**

P. O. Box 425

Midland - Ontario

## DIAPHRAGM PUMPS

For Contractors' Use



This class of pump will handle about anything that is wet and their usefulness has been shown in thousands of cases. We try always to have a few on hand for Emergency orders, also extra Diaphragms and 3/4" Suction Hose and Fittings.

Try us once if in a hurry or even if you have lots of time.

We also Supply

Manhole Covers and Frames, Catch Basins, Pavement Plates, Etc.

**THE R. McDougall Co., LIMITED**  
GALT, CANADA

## "GIANT" Portland Cement

A million barrels in the New York Subway alone.

Millions more in the Hudson Tunnels (just opened) under the North River, New York.

Used on the **Grand Trunk Pacific Railway** high level bridge between **Edmonton and Strathcona**, the highest concrete bridge piers in the world.

Sole Canadian Distributers :

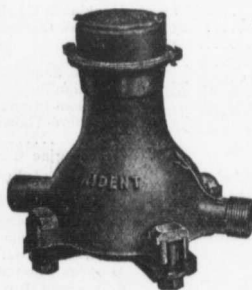
**STINSON-REEB**  
**Builders Supply Co., Ltd.**  
Montreal

Write or telegraph for Prices

Large Stock at Fort William and Port Arthur

## Neptune Meter Company

Manufacturers of the Well-known



**TRIDENT**  
**Frost-Proof**  
**Water**  
**Meters**

WRITE FOR CATALOGUE

Main Office - 90 West Street  
New York City