

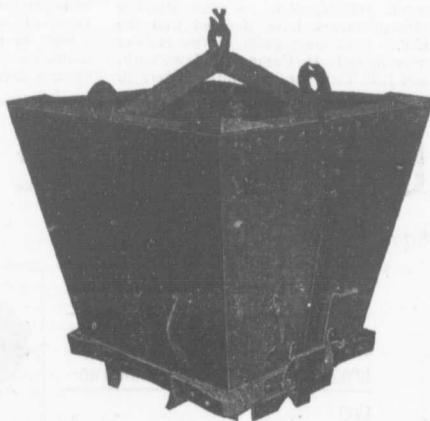
CYCLOPEAN CONCRETE BUCKETS



Were designed to meet the growing needs and demand for a Practical Bottom Dumping Bucket for the rapid and economical handling of concrete and other materials.

The continued and increasing demand for them, along with the many complimentary letters from Engineers and Contractors is evidence of success.

Furnished in all Sizes and Styles—hand or rope tripping device.



W. H. C. Mussen & Co.

Railway, Mining and Contractors' Supplies

Montreal