

The Epworth League Catechism

First Section

Prepared for Use in the League

What is the Epworth League?

It is the authorized and official young people's society of the Methodist Church, and one of its most valuable organizations, because it is composed of young men and women banded together for training in the service of Jesus Christ.

Where was the Epworth League first organized?

The Epworth League was decided on and formally organized in the City of Cleveland, Ohio, in May, 1889. The Canadian Epworth League movement was inaugurated at a mass meeting held in the Metropolitan Church, Toronto, in Oct., 1889, at the initial call of Rev. Dr. Withrow. The first local Society or branch in Canada was organized in the Elizabeth St. Church, Barrie, Ontario, by the Rev. Dr. R. N. Burns, who was pastor of the church at that time.

Why was the Epworth League organized?

To meet the needs of the needs of the rising young Methodists.

Could not the Sunday School Meet the Needs?

No, the work of the Sunday School had been confined almost wholly to instructing the scholars in Bible truth, and to win them to Christ; but it has given little attention to practical training of the young in the active service of the Church. The Sunday School and the Epworth League are both needed, the League to supplement the School.

Why was it Named the Epworth League?

It is a Methodist Society, and is named after the old Epworth Rectory, the birthplace of John Wesley, the founder of Methodism.

What is the Purpose or Aim of the Epworth League?

It is, first of all, to save souls; to promote in its members an earnest, practical, intelligent Christianity; to assist them in the study of God's Word, and to increase their usefulness in service to God and their fellowmen.

There is something more than conversion needed. We are saved to serve. The work of the League is to train its members for service, to equip them for life, and so build up strong, active Christian characters.

Who may be Members of the Epworth League?

There are three classes of members—Active, Associate and Honorary.

Who are the Active Members?

They are Christians who have taken the Active members' pledge.

Who are the Associate Members?

Persons of good character, who desire the helpful influences of the League and attend its service. They can serve on Committees, but may not hold an elective office in the League.

Why have Associate Members?

There are in every Church and community many young people who are not Christians, and who have not taken the Active members' pledge. If they become Associate members they are held for the church, they enjoy the privileges of the League and are thus kept in touch with the Active members, whose aim should be to win the Associate members to acceptance of His service as Active members of personal faith in Christ, and open acceptance of the League and Church.

Who are the Honorary Members?

They are older members of the Church,

who wish to be identified with the young people's work, although they cannot regularly attend its services, though sympathetic to the young people and their work.

How can a person become a Member of the League?

By signing the Active members' pledge, or subscribing to the League Constitution as an Associate member.

Why does the League have a Pledge?

The work of the League is first of all a spiritual work. Its object is to lift its members to a high plane of life. The pledge embodies these high ideals, and when young people sign it they are committed by their honor to seek to live up

to its standard. It helps one in everyday life to be united with others, to strive together, to realize the high ideal of the New Testament character and conduct embodied in the Active Members' Pledge.

Do people Object to signing the Pledge?

Some people do. But it is necessary to keep the standard high, even if we have fewer members. Quality counts more than quantity.

What are the departments of the League work?

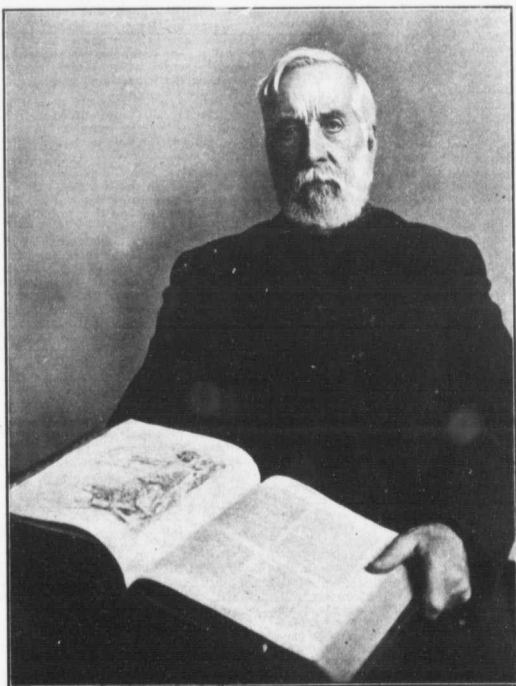
1. Christian Endeavor. 2. Missionary.
3. Literary and Social. 4. Citizenship.
5. Junior.

What officers are needed in the League?

Honorary President (the pastor), the President, five Vice-Presidents, Secretary, Corresponding Secretary, Treasurer, and Pianist.

All officers must be Active members of the League.

Men of Whom You Ought to Know



REV. N. BURWASH, S.T.D.

Chancellor Victoria College.

FOR nearly half a century, Nathaniel Burwash has been intimately connected with Victoria College, and his recent retirement from the Chancellorship, which position he has filled for years to the credit of the Institution and with honor to the Church, is deeply regretted by an unnumbered host of admirers and friends. No man has exerted as large and permanent an influence over the present generation of Canadian Methodist preachers as he, and perhaps no leader in our Church was ever better loved. With deep affection for him as a man, full confidence in him as a teacher, and great gratitude for the benefits of his religious leadership, the whole Church will pray that he may be spared yet many years to reap some of the fruits of his labors and to enjoy a happy and serene autumntide.