

90. Skilled Labour Wtd.

90. Skilled Labour Wtd.

MINOR-BANTAM:

Clarkson burns Dixie-Burn, 5-0

Ray Henderson knocked in two goals and Bob Hall, Rene Sauve, and Jim Williams added singles to give Clarkson a 5-0 minor bantam major win over Dixie Burn Marshall Construction last week.

Larry Benwell, in the nets for Clarkson, held Dixie scoreless.

Cawthra G.W. Ramm edged Malton 5-4 on a three-goal effort by Wiscombe and singles by Roberts and Briscoe. Bill Brodie got

two for Malton. Frank St. Jean and Joe Guerrei counted singles for the losers.

Applewood and Erindale tied 2-2. Wayne Britton and Randy Ponting scored for Applewood. The Erindale marksmen were John Johnston and Alan Williams.

A DIVISION

Brad Lowry hit for two goals to lead his Lorne Park team to a 4-1 victory over Applewood Superior Supply. Dave Enns and Tod Oldershaw got the other scores.

Bob McFarlane scored Applewood's lone marker.

Dixie Tony's Texaco and Malton battled to a 2-2 draw. Pete Money and Bob Wiley scored for Dixie and Martin and Mitchell hit for Malton.

B DIVISION

Terry Noble and Mike Pelz popped in two goals apiece and singles by David McFadden, Bill Lamprea and Ian Fraser completed the scoring in a 7-2 romp for Erindale over Dixie Burn Myer's Wire. Rick Jackson

and Mike Cluff scored for the losers.

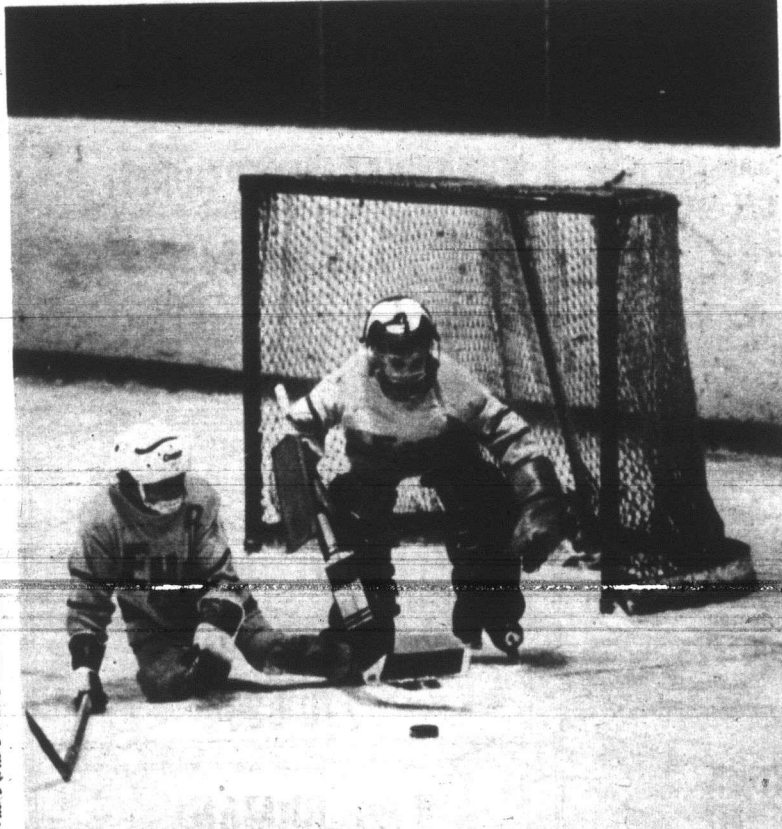
Cloverleaf recorded a 4-2 win against Cooksville when John Colmone got two goals and Bill Dewson and Tim Ryan picked up singles. Gord Walsh and Paul Greenhalgh hit for Cooksville.

R. Nimeek earned a shut-out when he blanked Dixie Burn Offset Makeup and led Dixie Burn Telecraft to a 4-0 win. S. Brush (2), D. Stinchcom and F. Montviet scored for the winners.

Dave Steel's only goal proved to be the winner for Malton over Cawthra in their encounter. Jean Johnston was in the nets for Malton.

C. Plouffe scored a pair of goals and P. Scott added a single in Lorne Park's 3-1 win over Clarkson. G. Millar got Clarkson's only goal.

Bob Everett for Port Credit Hoopers Pharmacy and Steven Bradley for Clarkson B-1 took their teams to a 1-1 draw.



Goaltender George Hurley and Mike Jakovic of the Erindale Samuel and Son team prepare to cover up the puck in their minor-atom C game played against Dixie-Burn Longhorn Steak last week. Jeff Wooley scored late in the game to give Longhorn a 1-0 win. (staff photo)

Park Royal couples roll for Christmas turkeys

A dozen bowlers won turkeys in the Park Royal couples Bowling League at Park Royal Lanes last week. But on the lanes Jane Burden almost took all the marbles as she captured three of the four women's divisions.

Mrs. Burden counted a 674, 701 and a 287 for the high triple flat, high triple handicap and the high single handicap respectively.

Only Mrs. Gwen Williams broke the monopoly as she registered a 278 to capture the high single flat.

The men's division was also completely dominated by two men as Ross Poole took the men's high triple flat (657) and triple handicap (696) and Murray Lozinski grabbed the men's high single flat (278) and handicap single (302).

Along with Lozinski, Poole, Mrs. Burden and Mrs. Williams, Helen Wright, Bill Banks, Nancy Janks, Ruth Hopkins, Bernice Cunningham, George Pable, Myrtle Johnston and Eileen Taylor won turkeys in the special roll-off.

In the team standings Coyotes lead with 66. Wild Ones follow with 59 and Strikers are right behind with 56. Cotton balls (54), Question Marks (52) and Willie Billies (51) follow in that order.

NEWS ITEM

DEC. 16: In high school wrestling there is a lot of pressure put on the heavier boys.



"I'M SORRY GEORGE, BUT YOU SHOULD'VE TRIED HARDER!"

91. Jobs of Interest to Men

91. Jobs of Interest to Men

Experienced Service Station Attendant

Telephone 625-0021

MERRY CHRISTMAS AND

MANY THANKS FOR THE WONDERFUL SUPPORT THE PEOPLE OF MISSISSAUGA HAVE GIVEN ME IN THE PAST

ROY K. McMILLAN

ENTERTAINMENT NIGHTLY.

FULLY LICENCED

30 PORT ST. EAST.



BANQUET FACILITIES

DINING ROOM

PORT CREDIT

274-2338

IN THE CARAVEL LOUNGE
DEC. 21 TO JAN. 2

WARREN PEACE and
AMANDA ROSE LEE
with AMIRA, Exotic Dancer

CHRISTMAS EVE MATINEE

From 2 till 6 p.m.

CHRISTMAS DAY
FAMILY DINNER

Limited number of New Years Eve tickets still available!

Noon till 10 p.m. Special Christmas menu

The Poodle Puff

(PELJO KENNELS)

are moving
back to Mississauga!

January 1st, 1971

Our New Address
1154 Birchview Drive, Lorne Park
Telephone 278-2008

Champion Stud Service

Grooming

Boarding

Also Puppies For Sale