

What Paris Favors in Autumn Suits and Coats

8578—Ladies' Jacket. Designed for 34 to 46 bust. Length at center-back 45 inches. No. 8416—Ladies' One-piece Gathered Skirt. Designed for 24 to 36 waist. Width at lower edge about 1 3/8 yard. The suit in medium size requires 4 yards 54-inch serge—3 3/8 yards 36-inch printed taffeta for lining. As the season advances the suit with long jacket seems to be increasing in favor. Here is an attractive model in simple tailored style to be fashioned of serge or tricotine and made up without trimming. A square collar finishes the neck and is attached to the fronts of the jacket which roll to form revers opening almost to the waist-line.

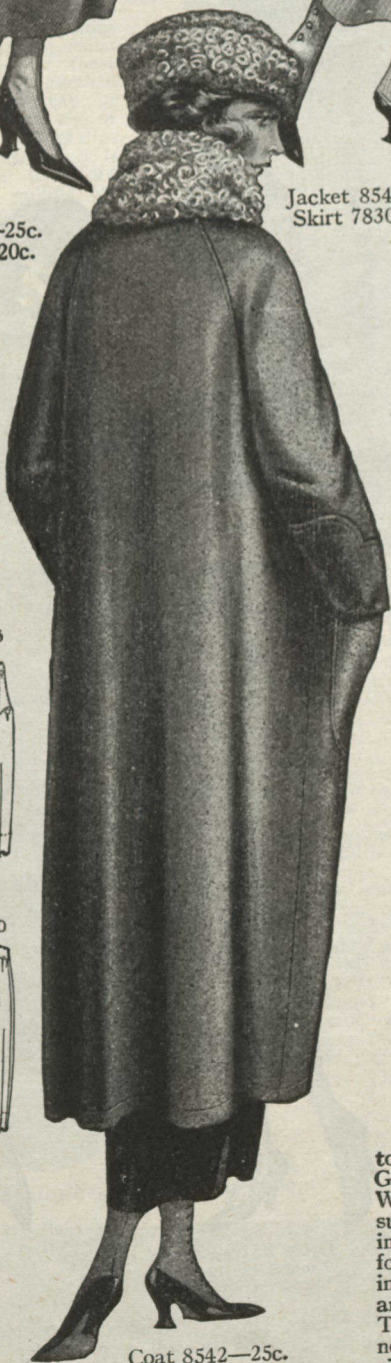


Jacket 8578—25c.
Skirt 8416—20c.



Coat 8570—25c.

Jacket 8564—25c.
Skirt 8404—20c.



Coat 8542—25c.

Jacket 8545—25c.
Skirt 7830—20c.



Coat 8475—25c.
Embroidery 1237,
blue or yellow—20c.
Skirt 7905—20c.

Coat
8570—25c.

8545—Ladies' Jacket. Designed for 34 to 48 bust. No. 7830—Ladies' Two-piece Gathered Skirt. Designed for 24 to 36 waist. Width at lower edge about 1 1/2 yard. The suit in medium size requires 4 1/8 yards 54-inch wool Jersey—3 1/4 yards 36-inch satin for lining jacket. Wool Jersey is very much in favor for light-weight early Fall suits, and if preferred, the jacket may be unlined. The mannish notched collar forms the neck finish, and a narrow string belt encircles the waist-line. A belt with tab extensions gives a touch of novelty to the skirt which closes at left side-seam.

8570—Ladies' Coat. Designed for 34 to 50 bust. Size 36 requires 3 3/4 yards 54-inch plush or Bolivia cloth—5 yards 36-inch

satin for lining. Length at center-back 48 inches. A panel back and large convertible collar are smart features. White kidskin shoes or pumps of brown kidskin may be worn.

8564—Ladies' Jacket. Designed for 34 to 44 bust. Length at center-back 44 1/2 inches. No. 8404—Ladies' Two-piece Gathered Skirt. Designed for 22 to 36 waist. Width at lower edge about 1 3/8 yard. The suit in medium size requires 4 1/8 yards 54-inch gabardine—3 3/4 yards 36-inch satin for lining. A smart suit the jacket of which shows the new length, the Directoire collar, and dart-fitted front. At center-back there is a panel that extends into the skirt section that lengthens the short side-back sections of the jacket.



Coat 8549—25c.
Skirt 8215—20c.



8542—Ladies' Coat. Designed for 34 to 48 bust. Size 36 requires 4 yards 54-inch Bolivia cloth—5 1/4 yards 36-inch satin for lining. Length at center-back 48 inches. A practical coat with convertible collar and raglan sleeves.

These are Pictorial Review Patterns. If your local dealer cannot supply you, send direct to us—253-259 Spadina Avenue, Toronto, Ontario.

DESCRIPTIONS CONTINUED ON PAGE 34