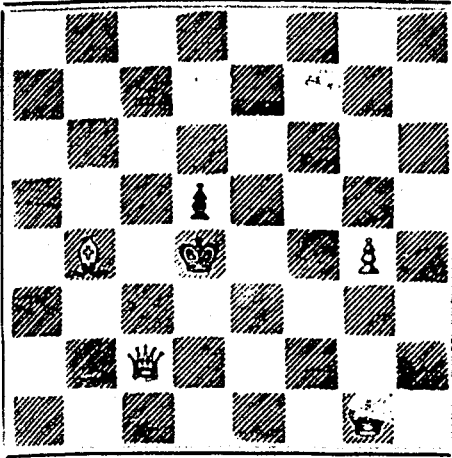


PROBLEM No. 327. By H. F. L. Meyer. BLACK.



WHITE.

White to play and mate in three moves.

GAME 451TH.

THE CHESS MATCH AT ST. LOUIS.

(From the Globe-Democrat.)

Seventh game in the match between Messrs. Judd and Mackenzie.

(Scotch Gambit.)

- White.—(Mr. Judd.) 1. P to K 4, 2. Kt to K B 3, 3. P to Q 4, 4. Kt takes P, 5. B to K 3, 6. P to Q B 3, 7. B to Q Kt 5, 8. Castles, 9. P to K B 4, 10. P to Q Kt 4, 11. Kt to Q R 3, 12. Q Kt to Q B 2 (a), 13. B takes Kt (b), 14. B takes K B, 15. R to K B 3, 16. Q to Q 3, 17. P to K 5, 18. Q to Q 2, 19. Kt takes Q P, 20. P takes B, 21. P takes B, 22. R to Q B, 23. K to R, 24. R to K Kt, 25. P to Q Kt 5, 26. Q to K B 2, 27. Q to Kt 2. Black.—(Mr. Mackenzie.) 1. P to K 4, 2. Kt to Q B 3, 3. P takes P, 4. B to Q B 4, 5. Q to K B 3, 6. K Kt to K 2, 7. Castles, 8. P to Q 3, 9. B to Q 2, 10. B to Q Kt 3, 11. Q R to Q, 12. Kt takes Kt, 13. B takes K B, 14. R P takes B, 15. B to Q B 4, 16. P to Q 4, 17. Q to K B 4, 18. P to Q 5 (c), 19. B takes Kt, 20. B takes R, 21. Kt to Q 4, 22. P to Q B 3, 23. Kt takes K B P, 24. R to Q R, 25. P to K R 4, 26. Kt to R 6, 27. Kt takes R. And White resigns.

NOTES.

- (a) A singular blunder for a player of Mr. Judd's force to commit; Kt to Q B 1 with the intention of getting rid of the adversary's dangerous K B, seems to be the correct line of play. (b) If Kt takes B, Black of course replies with B take K B. (c) The best way to utilize his superiority of force.

SOLUTIONS

Solutional Problem No. 325.

In Problem No. 326, the Kt at Black's K B sq should be Black instead of White.

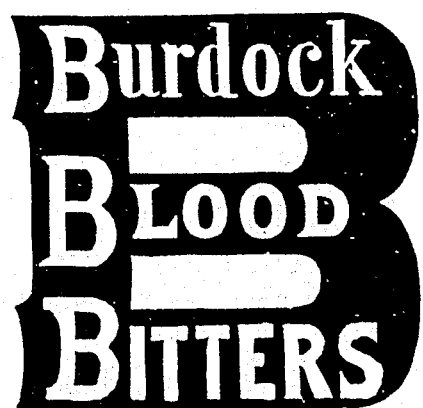
- 1. Q to K sq 1. Anything. 2. Mates accordingly.

Solution of Problem for Young Players No. 323

- WHITE. 1. R to Q R sq (cb) 1. K takes R 2. K takes R 2. Any. 3. Mates acc.

PROBLEM FOR YOUNG PLAYERS, No. 324.

- White. Kt at K B 6 Kt at K R 4 R at K Kt sq Pawn at Kt at K sq KR 3 Black. White to play and mate in two moves.



50 CHROMOS, name in new type, 10c. by mail. 40 Apts. Samples, 10c. U. S. CARD CO., Northford, Ct.

BANK OF MONTREAL.

Notice is hereby given that a Dividend of FOUR PER CENT. and a BONUS OF TWO PERCENT. upon the Paid-up Capital Stock of this Institution has been declared for the current half-year, and that the same will be payable at its Banking Houses in this city and at its Branches on and after WEDNESDAY, the 1st day of June next.

The Transfer Books will be closed from the 17th to the 31st of May next, both days inclusive. The ANNUAL GENERAL MEETING of the Shareholders will be held at the Bank on MONDAY, the 6th DAY OF JUNE next. The Chair to be taken at ONE o'clock.

By order of the Board. CHARLES F. SMITHERS, General Manager.

CUSTOM TAILORING.

If you want fashionable and well-fitting garments made in the latest style, where a perfect fit and entire satisfaction is guaranteed, go to

A. GRUNDLER, 302 ST. JOSEPH STREET.

who was awarded FIRST PRIZE FOR CUSTOM TAILORING at the Dominion Exhibition.

\$66 a week in your own town. Terms and \$5 outfit free. Address H. HALLETT & Co., Portland, Maine.

Mr. J. H. BATES, Newspaper Advertising Agent, 41 PARK ROW, Times Building, NEW YORK, is authorized to contract for advertisements in the CANADIAN ILLUSTRATED NEWS at our BEST RATES.

50 All Lithographed Chromo Cards, no 2 alike, 10c. Apts. big Outfit, 10c. GLOBE CARD CO., Northford, Ct.

British American

BANK NOTE COMPANY,

MONTREAL.

Incorporated by Letters Patent.

Capital \$100,000.

General Engravers & Printers

- Bank Notes, Bonds, Postage, Bill & Law Stamps, Revenue Stamps, Bills of Exchange, DRAFTS, DEPOSIT RECEIPTS, Promissory Notes, &c., &c., Executed in the Best Style of Steel Plate Engraving. Portraits a Specialty. G. B. BURLAND, President & Manager.

Love Letters, 24 Illustrated Escort Cards, 6 Popular songs assorted, all 10c. West & Co., Westville, Ct.

THE COOK'S FRIEND BAKING POWDER

Has become a Household Word in the land, and is a HOUSEHOLD NECESSITY

In every family where Economy and Health are studied. It is used for raising all kinds of Bread, Rolls, Pancakes, Griddle Cakes, &c., &c., and a small quantity used in Pie Crust, Puddings, or other Pastry, will save half the usual shortening, and make the food more digestible.

THE COOK'S FRIEND

SAVES TIME. IT SAVES TEMPER. IT SAVES MONEY.

For sale by storekeepers throughout the Dominion and wholesale by the manufacturer.

W. D. McLAREN, Union Mills, 55 College Street.

THE SECRETS OF ANCIENT AND MODERN MAGIC

THE ART OF CONJURING UNVEILED.



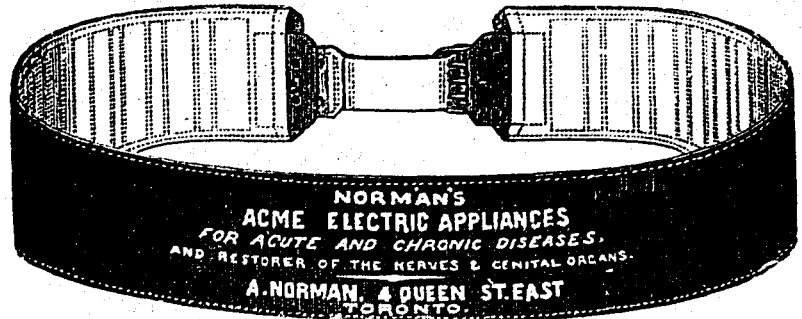
As performed by the wonderful magicians Houdin, Col. Stodard and Heller. Gives all the best stage tricks and full explanations so that you can perform their most difficult tricks on the stage or in a parlour. It teaches the Indian basket trick; pull live rabbits out of a hat and roll them all into one; sphinx illusion trick; to make a lady sleep in mid-air; Chinese solid ring trick; make a coin answer questions; make it shower real money; take several bird cages from a hat; take live doves out of an omelet; flying glass of water; tell a card by smelling it; bring bowls of gold fish from empty handkerchiefs; make flowers grow out of an empty flower pot; make a drum hung to the ceiling, tap and roll. The book contains an immense number of such tricks, and if you desire to give a parlour or ball entertainment you can delight an audience for 2 hours, \$1,000 a night has been received at the door to see these very tricks performed. This book sent by mail for 10 three cent stamps—or 2 cts. currency. Five books for \$1.00. Valuable catalogue of 1,000 fast selling articles for agents free. E. NASON & CO., publishers, 11 Nassau street, New York.

25 New and Beautiful Japanese, Rose Bud, Trans-parent, Comic and Blue Bird Cards, with name on all, 10c. Twelve pucks or one dollar. Agent's complete outfit, 10c. Sample of Magic Cold Water Pen (writes without ink), 5c. Agents wanted. Queen City Card House, Toronto.

THIS PAPER MAY BE FOUND ON FILE AT GEO. P. HOWELL & CO'S NEW YORK. Newspaper Advertising Bureau (10 SPRUCE STREET), WHOLE ADVERTISING CONTRACTS may be made for it in

NORMAN'S ELECTRO-CURATIVE BELT INSTITUTION.

(ESTABLISHED 1874.)



NORMAN'S ACME ELECTRIC APPLIANCES FOR ACUTE AND CHRONIC DISEASES, AND RESTORER OF THE NERVES & GENITAL ORGANS. A. NORMAN, 4 QUEEN STREET EAST, TORONTO.

A. NORMAN, Electrician.

4 QUEEN STREET EAST, TORONTO, ONT.

CONSULTATION FREE. Large Circulars, with Testimonials, may be had on application.

LEA & PERRINS' SAUCE



In consequence of Imitations of THE WORCESTERSHIRE SAUCE which are calculated to deceive the Public, Lea and Perrins have to request that Purchasers see that the Label on every bottle bears their Signature thus—

Lea Perrins



without which no bottle of the original WORCESTERSHIRE SAUCE is genuine.

Ask for LEA and PERRINS' Sauce, and see Name on Wrapper, Label, Bottle and Stopper. Wholesale and for Export by the Proprietors, Worcester; Crosse and Blackwell, London, &c., &c.; and by Grocers and Oilmen throughout the World.

To be obtained of

Messrs. J. M. DOUGLASS & CO., MONTREAL; Messrs. URQUHART & CO., MONTREAL.

LIEBIG COMPANY'S



EXTRACT OF MEAT

FINEST AND CHEAPEST MEAT-FLAVOURING STOCK FOR SOUPS, MADE DISHES & SAUCES.

An invaluable and palatable tonic in all cases of weak digestion and debility.

It is a success and a boon for which Nations should feel grateful. See Medical Press, Lancet, British Medical Journal, &c. To be had of all Storekeepers, Grocers and Chemists. Sole Agents for the United States (wholesale only) C. David & Co., fac-simile of Baron Liebig's Signature in Blue Ink across Label. 48, Mark Lane, London, England.

CAUTION.—Genuine ONLY with fac-simile of Baron Liebig's Signature in Blue Ink across Label.

ICE. 1881. ICE.

PURE BRIGHT ICE!

ORDERS NOW BEING RECEIVED BY

D. MORRICE & CO., 24 VICTORIA SQUARE.

Prices the same as last season.

The Scientific Canadian

MECHANICS' MAGAZINE

AND

PATENT OFFICE RECORD

A MONTHLY JOURNAL

Devoted to the advancement and diffusion of Practical Science, and the Education of Mechanics.

THE ONLY SCIENTIFIC AND MECHANICAL PAPER PUBLISHED IN THE DOMINION.

PUBLISHED BY

THE BURLAND LITHOGRAPHIC CO.

OFFICES OF PUBLICATION,

5 and 7 Bleury Street, Montreal.

G. B. BURLAND, General Manager.

TERMS:

One copy, one year, including postage, \$2.00

One copy, six months, including postage, 1.10

Subscriptions to be paid in ADVANCE.

The following are our advertising rates:—For one monthly insertion, 10 cts. per line; for three months, 9 cts. per line; for six months, 8 cts. per line; for one year, 7 cts. per line; one page of illustration, including one column description, \$30; half-page of illustration, including half column description, \$20; quarter-page of illustration, including quarter column description, \$10. 10 per cent. off on cash payments.

INVENTIONS AND MACHINERY, &c., or other matter of an original, useful, and instructive character, and suitable for subject matter in the columns of the MAGAZINE, and not as an advertisement, will be illustrated at very reduced rates.

REMITTING MONEY.—All remittances of money should be in the form of postal-orders. When these are not available, send money by registered letters, checks or drafts, payable to our order. We can only undertake to become responsible for money when sent in either of the above ways.

This Journal is the only Scientific and Mechanical Monthly published in Canada, and its value as an advertising medium for all matter connected with our Manufactories, Foundries, and Machine Shops, and particularly to Inventors, is therefore apparent.

50 FORTOISEL, Scroll, Wreath, Chromo, Motto and Floral Cards, 10c. U. S. Card Co., Northford, Ct.

THE BURLAND LITHOGRAPHIC COMPANY

(LIMITED)

CAPITAL \$200,000,

GENERAL

Engravers, Lithographers, Printers

AND PUBLISHERS,

3, 5, 7, 9 & 11 BLEURY STREET, MONTREAL.

THIS ESTABLISHMENT has a capital equal to all the other Lithographic firms in the country, and is the largest and most complete Establishment of the kind in the Dominion of Canada, possessing all the latest improvements in machinery and appliances, comprising:—

- 12 POWER PRESSES 1 PATENT LABEL GLOSSING MACHINE, 1 STEAM POWER ELECTRIC MACHINE, 4 PHOTOGRAPHING MACHINES, 2 PHOTO-ENGRAVING MACHINES,

Also CUTTING, PERFORATING, NUMBERING, EMBOSSING, COPPER PLATE PRINTING and all other Machinery required in a first class business.

All kinds of ENGRAVING, LITHOGRAPHING, ELECTROTYPING AND TYPE PRINTING executed in THE BEST STYLE

AND AT MODERATE PRICES

PHOTO-ENGRAVING and LITHOGRAPHING from pen and ink drawings a SPECIALTY.

The Company are also Proprietors and Publishers of the CANADIAN ILLUSTRATED NEWS, L'OPINION PUBLIQUE, and SCIENTIFIC CANADIAN.

A large staff of Artists, Engravers, and Skilled Workmen in every Department.

Orders by mail attended to with Punctuality; and prices the same as if given personally.

G. B. BURLAND,

MANAGER.