

Chess.

Solutions to problems sent in by Correspondents will be duly acknowledged.

Two "skirmishes" which recently took place in the Montreal Chess Club: Evans' Gambit.

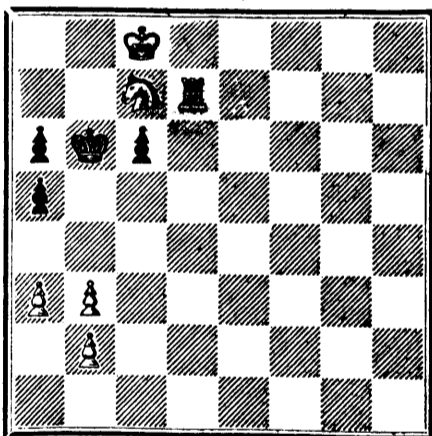
- Black-Mr. J. G. Ascher. White-Prof. Howe. 1. P. to K. 4th... 21. R. to K. 4th wins.

Scotch Gambit.

- White-Prof. Howe. Black-Mr. J. G. Ascher. 1. P. to K. 4th... 28. R. to K. B. 4th wins.

PROBLEM No. 86.

By Mr. R. H. Ramsey, Cobourg. BLACK.



WHITE.

White to play and mate in three moves.

SOLUTION OF PROBLEM No. 84.

- White, Black, 1. Q. to Q. Kt. 2nd... 3. Q. mates.

VARIATIONS.

- 1. R. to K. B. 4th ch. K. to K. 5th, or a, b. 2. R. to K. B. 4th ch. K. moves.

A BRAVE BOOK!

"What Woman Should Know."

A Woman's Book About Women.

By Mrs. E. B. DUFFEY.

The only work of the kind ever written by a woman. It is a necessity in every household.

LANCEFIELD BROTHERS, Hamilton, Ont.

7-18 tf



Ottawa River Navigation Company's MONTREAL TO OTTAWA DAY AND NIGHT LINE.

New Iron Steamer "Peerless," Capt. A. Bowie. "Princess of Wales," Capt. H. W. Shepherd.

Passengers leave by the 7 A.M. and 5 P.M. trains for Lachine by Railway, and connect with the Steamers "Princess of Wales" and "Princess" for Ottawa and intermediate landings.

Passengers leave Ottawa at 7 A.M. and 5 P.M. by Steamers "Peerless" and "Queen Victoria" for Montreal and intermediate landings.

BAGGAGE CHECKED. (Meals and Staterooms Extra.)

Passengers leaving Ottawa by the evening steamer will descend the Rapids. No Through Passengers taken on Saturday Evening Boat.

The Comfort and Economy of this Line are unsurpassed. Whilst the Route is one of the most picturesque in Canada. Tourists will find this a delightful trip.

Single and Return Tickets may be had at the Company's Office, 13 Bonaventure Street; at the Grand Trunk Depot, Montreal; and at the Office, Queen's Wharf, Ottawa.



Grand Trunk Railway Company of Canada.

1873. Summer Arrangements. 1873. Pullman Palace, Parlor and Handsome New Ordinary Cars on all Through Day Trains.

Night Trains over the whole Line.

TRAINS now leave Montreal as follows: GOING WEST.

- Day Mail for Prescott, Ogdensburg, Ottawa, Brockville, Kingston, Belleville, Toronto, Guelph, London, Brantford, Goderich, Buffalo, Detroit, Chicago and all points West, at 8.00 a.m.

GOING EAST.

- Day train for White Mountains, Portland, and Boston, at 7.00 a.m.

GOING SOUTH.

- Train for Rouses' Point connecting with steamers on Lake Champlain, at 6.00 a.m.

As the punctuality of the trains depends on connections with other lines, the Company will not be responsible for trains not arriving at or leaving any station at the hours named.

The steamer "PALMOUTH" leaves Portland every Tuesday, at 5.30 p.m., for Halifax, N.S. The splendid steamer "CARLOTTA," running in connection with the Grand Trunk Railway, leaves Portland for Halifax, N.S., every Saturday at 4.00 p.m.

Through Tickets issued at the Company's principal stations.

For further information, and time of Arrival and Departure of all Trains at the terminal and way stations, apply at the Ticket Office, Bonaventure Depot, or at No. 143 St. James Street.

TO LITHOGRAPHERS.

ONE OR TWO FIRST-CLASS ENGRAVERS, and One expert CHROMOLITHOGRAPHIC ARTIST can find permanent employment at the office of the CANADIAN ILLUSTRATED NEWS.

GEORGE E. DESBARATS, PUBLISHER, MONTREAL.

7-5 tf



ALLAN LINE.

Under contract with the Government of Canada for the Conveyance of

Canadian & United States Mails 1872-3.—Winter Arrangements.—1872-3. Passengers booked to Londonderry and Liverpool.

This Company's Lines are composed of the under-noted First-class, Full-powered, Clyde-built, Double-Engine, Iron Steamships:

Table listing steamships: SARDINIAN, CANADIAN, ACADIAN, MANITOBIAN, POLYNESIAN, CIRCASSIAN, SARMAIAN, SCANDINAVIAN, PRUSSIAN, AUSTRIAN, NESTORIAN, MORAVIAN, PERUVIAN, GERMANIAN, CASPIAN, HIBERNIAN, NOVA SCOTIAN, NORTH AMERICAN, CORINTHIAN, ST. DAVID, ST. ANDREW, ST. PATRICK, NORWAY, SWEDEN.

THE STEAMERS OF THE LIVERPOOL MAIL LINE.

(Sailing from Liverpool every THURSDAY, and from Portland every SATURDAY, calling at Lough Foyle to receive on board and land Mails and Passengers to and from Ireland and Scotland) are intended to be despatched from Portland.

Rates of Passage from Portland: Cabin \$70 to \$80, Steerage \$25.

The Steamers of the Glasgow Line are intended to sail between the Clyde and Portland at intervals during season of winter navigation.

Rates of passage from Portland: CABIN \$60, INTERMEDIATE 40, STEERAGE 24.

An experienced Surgeon carried on each vessel Berths not secured until paid for. For Freight, or other particulars, apply to H. & A. ALLAN.

Corner of Youville and Common Sts., Montreal.

THE NEW CANADIAN WEEKLY.

THE FAVORITE THE BEST AND CHEAPEST PAPER IN AMERICA.

16 pages WEEKLY for \$2 00 per annum.

"THE FAVORITE" PLAN.—We have planned out a paper which gives more reading for less money than any paper in America.

"THE FAVORITE" SHAPE.—The elegant 16-page quarto form we have adopted, while more convenient for reading in sheets, is also better adapted for binding.

ONLY TWO DOLLARS.

"THE FAVORITE" ISSUE.—"THE FAVORITE" will be issued: 1. In weekly numbers of 16 pages at 5 cents.

"THE FAVORITE" MAXIM.—Canada for the Canadians—whether by birth or adoption. Let us help each other, if we aspire to be a Nation.

GIVE IT YOUR SUPPORT.

Club terms and sample numbers mailed free on application.

Great cash inducements to clubbers.

"THE FAVORITE" is sold by all News-dealers and on all Railway trains.

The CANADIAN ILLUSTRATED NEWS, and THE FAVORITE will be sent to one address for one year for \$5.00.

ADDRESS, GEO. E. DESBARATS, Publisher of THE FAVORITE, the Canadian Illustrated News, L'Opinion Publique and L'Etandard National.

No. 1, Place d'Armes Hill, and 319 St. Antoine St., MONTREAL.

TRAVELLERS' DIRECTORY.

We can confidently recommend all the Houses mentioned in the following List:

CALT, ONT. COMMERCIAL HOTEL, HENDERSON DIXON, Proprietor.

OTTAWA. THE RUSSELL HOUSE, JAMES GOWIN. PORT ELGIN. NORTH AMERICAN HOTEL, WM. ALLEN, Proprietor.

QUEBEC. THE CLARENDON, WILLIS RUSSELL & SON. ST. JOHN, N. B. VICTORIA HOTEL, B. T. OREGON.

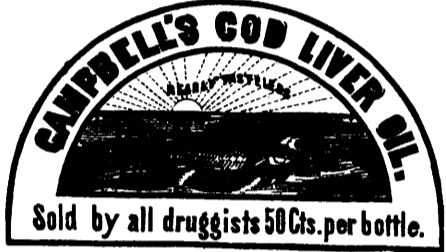
TEESWATER, ONT. KENT HOUSE, J. E. KENNEDY, Proprietor.

TORONTO. THE ROSSIN HOUSE, G. P. SHERAS, Lessee and Manager. THE QUEEN'S HOTEL, CAPT. THOS. DICK.

WALKERTON, ONT. HARTLEY'S HOTEL, MRS. E. HARTLEY, Proprietor.

ALBION HOUSE, KAMOURASKA. THIS favorite Sea-side Resort will be open for the reception of a limited number of guests on and after 25th instant.

HARRIET SMITH, PROPRIETRESS. 4th June 1873. 7-23f



"HEALTH THE CROWNING BLESSING OF LIFE."



WINGATE'S Standard English Remedies.

These valuable Remedies which have stood the test of trial, and become a household necessity, are the best that experience and careful research can produce for the cure of the various diseases for which they are especially designed.

THE FOLLOWING COMPRISE THE LIST: Wingate's Cathartic Pills.—For all derangements of the Stomach, Liver and Bowels.

Wingate's Nervo-Tonic Pills.—Used with remarkable success in all Nervous Affections.

Wingate's Chalybeate Pills.—Designed especially for Female use in complaints peculiar to their sex.

Wingate's Dyspepsia Tablets.—A powerful aid to digestion, and cure for Dyspepsia.

Wingate's Pulmonic Troches.—An excellent Remedy for all Irritation of the Throat and Lungs.

Wingate's Worm Lotenges.—A safe, pleasant and effectual Remedy for Worms.

The above Remedies are sold by all Druggists and Dealers in Medicines. Descriptive Circulars furnished on application, and single packages sent, post paid, on receipt of price.

Dr. N. A. SMITH & Co., SOLE AGENTS FOR CANADA AND THE UNITED STATES. No. 245 ST. JAMES ST., MONTREAL.

NEW ROYAL LYCEUM, TORONTO, ONTARIO.

SAPHORE & WAUGH, Lessees. STERLING ATTRACTIONS EVERY EVENING. 7-7 1/2

LACHINE CANAL ENLARGEMENT.

NOTICE TO CONTRACTORS.

SEALED TENDERS, addressed to the undersigned, and endorsed, "Tender for Lachine Canal," will be received at this office until noon of Tuesday, the 8th day of July next.

The signatures of two solvent and responsible persons, residents of the Dominion, willing to become sureties for the due fulfilment of the contract, must be attached to each Tender.

The Department does not, however, bind itself to accept the lowest or any Tender. By order, F. BRAUN, Secretary. Department of Public Works, Ottawa, 7th June, 1873. 7-24-c