

# STOBART, SONS & CO

—WHOLESALE—

## DRY GOODS

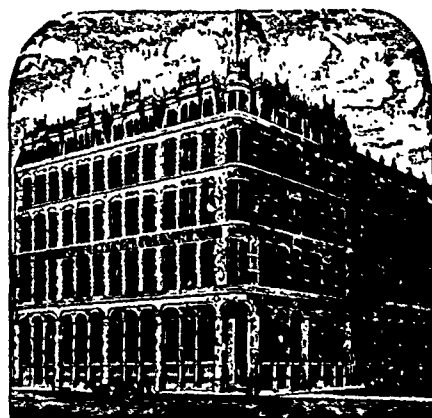
WINNIPEG, Man., and LONDON, Eng.

FALL, 1890.

Travellers are now out with Fall and Winter Samples.

ALL NEW IMPORTATIONS.

Kindly reserve your orders till you see them.



# S. GREENSHIELDS, SON AND CO.,

GENERAL

## DRY GOODS,

17, 19 & 21 Victoria Square and 730, 732, 734 and 736 Craig Street, MONTREAL

Complete Set of Samples with

C. J. Redmond,

Also with Donaldson's Block, WINNIPEG

Wm. Skene, Van Horne Block, Vancouver, B.C.

## Standard OIL Company

(UNITED STATES)

Eldorado Castor, the best Oil in the world for Farm Machinery.

Eldorado Engine and Atlantic Red for Threshers.

ALL PRODUCTS OF PETROLEUM IN STOCK.

D. WEST, Agent, Office: Western Canada Loan Building.

Room 8, Corner Portage Avenue and Main Street, WINNIPEG.

## JAS. MCCREADY & CO., WHOLESALE

Boot and Shoe Manufacturers,  
MONTREAL.

SAMPLE ROOMS, 496 MAIN ST. WINNIPEG  
W. WILLIAMS, AGENT.

## MILLS & McDOUGALL, (Late Mills & Hutchison)

MONTREAL.

CANADIAN WOOLENS, IMPORTED WOOLENS  
AND TRIMMINGS.

Represented in Manitoba, Northwest and  
British Columbia by MR. G. H. SIMPSON.

## HUTCHISON, DIGNUM & NISBET,

Manufacturers' Agents and Merchants,  
LINENS, IMPORTED WOOLENS AND TAILORS'  
TRIMMINGS. SELECT CANADIAN TWEEDS.

55 Front St. West, - TORONTO.

—SOLE AGENTS IN CANADA FOR—  
J. N. Richardson, Sons & Ouden, Belfast, - Linen Goods  
Currie, Lee & Gawn, Hawick, - Scotch Tweeds  
R. Pringle & Son, Hawick, - Scotch Underwear  
David McNeely & Son, Manchester, - Rubber Goods  
J. S. Manton & Co., Birmingham, - Buttons

Stock of Linens, Tweeds and Trimmings  
always on hand.

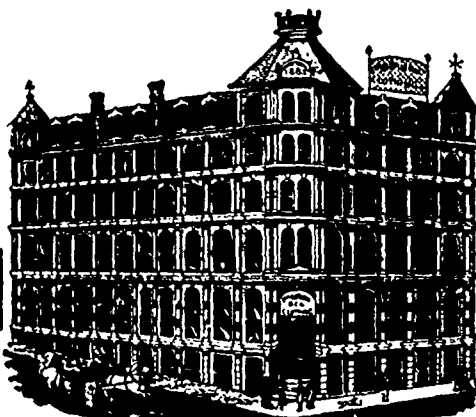
R. B. HUTCHISON. Ed. J. DIGNUM. R. A. NISBET.  
(Late Mills & Hutchison)

## Jas. O'Brien & Co.

—MANUFACTURERS OF—

## CLOTHING

Montreal and Winnipeg.



HEAD OFFICE AND MANUFACTORY:  
VICTORIA SQUARE, - MONTREAL.

## OGILVIE MILLING CO'Y, WINNIPEG.

REGISTERED BRANDS:

## Hungarian and Strong Bakers' Flour

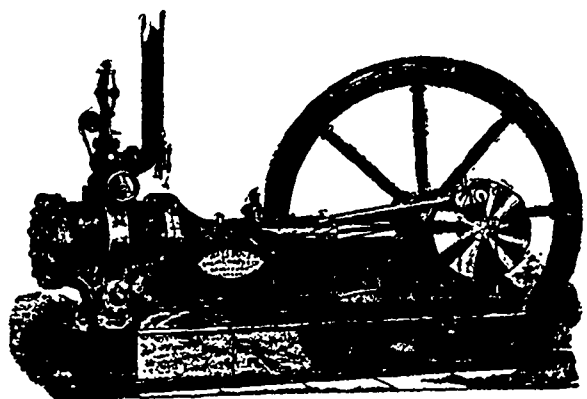
—DEALERS IN ALL KINDS OF—

## GRAIN and FEED.

MILLS:

|                         | DAILY CAPACITY |                         | DAILY CAPACITY |
|-------------------------|----------------|-------------------------|----------------|
| ROYAL—Montreal          | 1800 Barrels   | POINT DOUGLAS—Winnipeg  | 1000 Barrels   |
| GLENORA                 | 1200 "         | SEAFORTH—Seaforth, Ont. | 300 "          |
| GODERICH—Goderich, Ont. | 1000 "         |                         |                |

## WATEROUS ENGINE WORKS COMPANY LD.



WINNIPEG, Man.  
ENGINES AND BOILERS

SAW-MILLS

—AND—

SAW-MILL MACHINERY

ELEVATOR MACHINERY.

SOLE AGENTS FOR

BARNARD & LEA'S ELEVATOR SEPARATORS.

WRITE FOR CIRCULARS.