

# Up Go Cattle Values— Down Go Feed Costs!

Letz-ground feed means a two-way increase of profits for the farmer and feeder. First, it effects a 20 per cent. saving on feed costs. Scientific tests conclusively prove that an average of 20 per cent. of the whole grain fed cattle goes to the manure heap unchanged—wasted! It eliminates this loss.

Second, Letz-ground feed compared to whole grains carries a higher protein content per pound. Hence, it produces slicker, fatter, better nourished livestock. And that means bigger prices and profits.

Farmers throughout the country are now feeding this more economical way. They're making bigger clean-ups than ever. And they're doing it with the LETZ. Read why:—

# LETZ

## The World's Leading Feed Grinder

The Letz is the first mill to meet every feed-grinding requirement. It is famous for fine grinding and capacity. Grinds corn, rye, oats, barley and all kinds of grains; grinds them with clover, alfalfa and other properly proportioned roughage and concentrates into fine, wholesome meal. Handles everything wet or dry—cannot clog—is durable—is most economical to operate. A Letz on your farm means an easy 20 per cent. cut on feed bills!

Letz-ground meal, because of its powder-like form, is preferably to all others. It is more nourishing—better liked by animals.

### 848 Keen Cutting Edges

Letz patented grinding plates lead the world in fine cutting, capacity, light running and durability. They grind anything that needs grinding!

848 keen cutting edges pulverize the grain into powder. Plates are self-sharpening. Can be run together for hours—empty—without slightest injury. Cutting edges will be sharper than before. One set is guaranteed to average 2,000 bushels of moderately ground feed before replacement is necessary.

We guarantee that the Letz will grind more grain on less fuel and grind it better than will any other process, bar none. This is why feeders making the biggest profits by grinding their own food, are the feeders who use the LETZ!

The Letz has many other practical, labor-saving cut-cutting features, including force feed, ball and bearings, etc.

### Investigate NOW—Today!

High prices of feed costs and big profits in hogs and cattle make it now more necessary than ever to feed ground feed and save the costly 20 per cent. waste now going to the manure heap. Over 28 years of unquestioned leadership is behind the Letz. Investigate! Write for our big catalog and our free "Feeding Farm Animals." Tells all about **Balanced Rations** and how to get maximum results at lowest cost. Copy mailed for charge. Send a postal card at once. Address—

## Letz Manufacturing Company

315 East Road Crown Point, Indiana.

Address Eggs to Crown Point, Ind., U.S.A.

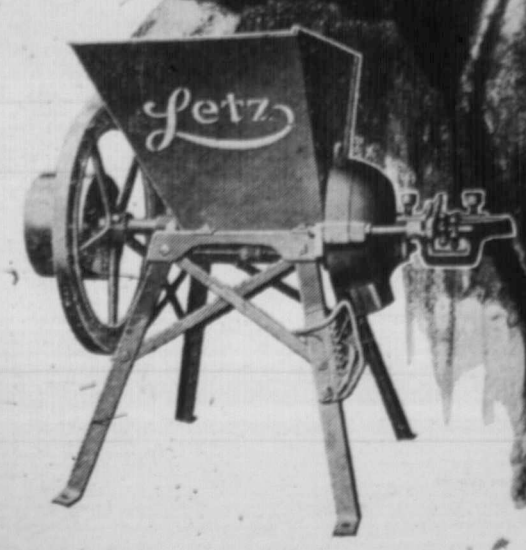
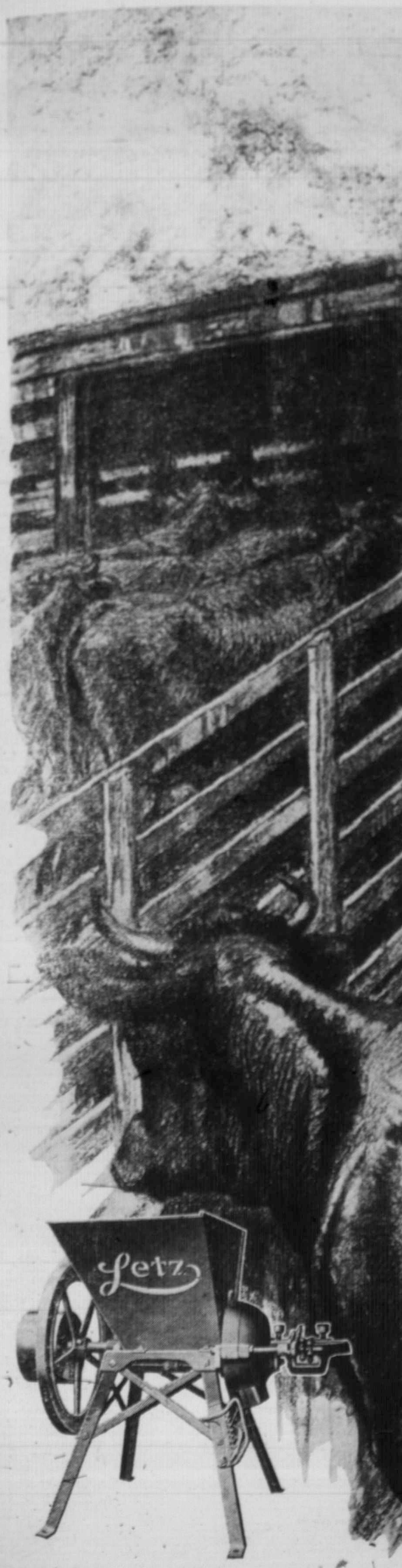
DISTRIBUTOR FOR CANADA:—

## UNITED GRAIN GROWERS LTD.

WINNIPEG, MAN. REGINA, SASK.  
CALGARY, ALTA. SASKATOON, SASK.

### Grind for Your Family Table

Thousands of LETZ users grind their own corn meal and corn, oat or barley flour. The wonderful Letz about 848 grinding plates, with their 848 keen cutting edges cut and grind the flour in one operation—reduce the cost of living.



39  
1409;  
1409;  
1410;  
1411;  
1412;  
1413;  
1414;  
1415;  
1416;  
1417;  
1418;  
1419;  
1420;  
1421;  
1422;  
1423;  
1424;  
1425;  
1426;  
1427;  
1428;  
1429;  
1430;  
1431;  
1432;  
1433;  
1434;  
1435;  
1436;  
1437;  
1438;  
1439;  
1440;  
1441;  
1442;  
1443;  
1444;  
1445;  
1446;  
1447;  
1448;  
1449;  
1450;  
1451;  
1452;  
1453;  
1454;  
1455;  
1456;  
1457;  
1458;  
1459;  
1460;  
1461;  
1462;  
1463;  
1464;  
1465;  
1466;  
1467;  
1468;  
1469;  
1470;  
1471;  
1472;  
1473;  
1474;  
1475;  
1476;  
1477;  
1478;  
1479;  
1480;  
1481;  
1482;  
1483;  
1484;  
1485;  
1486;  
1487;  
1488;  
1489;  
1490;  
1491;  
1492;  
1493;  
1494;  
1495;  
1496;  
1497;  
1498;  
1499;  
1500;