

ation. The
e social con-
pathy must
ch action is
e promptly
of his own
ts of others
constraining
compelling
hat he may
e well-being

a these days
uman spirit
task of call-
participation
r time. Let
e anti-social
ntage them-
war to prey
the unpro-
as ever to
uly personal
h will rejoice
ug and safe-
each.

W. R. W.

LATION

district offi-
k about the
and recuper-
perfecting of
rict conven-
district offi-
ce and shoul-
maintenance
ent through-
ing together
o discuss the
t in the dis-
ar to issue in
eak branches
eeful exten-
m one of the
ach which has
d shows that
t as a going
and with a
l-if possible,

to something
of a district
e have a well
semi-annual
ut it is well
a stimulation
back through
e whole work
movement as
anitoba there
ere is no dif-
Any district
it can secure
great things
just takes a
e faith and a
perseverance.
n the fall or
pare the way
ation. Every
ade to secure
ll receive the
rom attending
at Brandon.
is a kind of
get your dis-
a convention
d move things

OUT

read, but the
k is infinitely
g is one of the
old's life. It
one who think

that the deepest hunger of the human spirit is met.

The work of the farmer at certain seasons largely precludes reading. When the muscles are weary reading becomes a task even if there is time, which usually there is not. But there is many an hour of farm work in which the mind is wholly or almost wholly free to think. While it must be admitted that farm problems must have first place in the mental operations of those hours, it will generally be admitted that there are from season to season many of them which might be used for the turning over of community and general problems.

Many a problem might be solved for the community, many a plan might be formulated for successful development, many a view of public, political and economic questions might be clarified and straightened if the man behind the plow and the man on the binder and the man on the wagon seat, as he hauls his crop to market, would ponder and decide and resolve. The thinking of the future is more and more to be done in the country. The life of the country is going to come to its own amid the varied interests and relationships of the nation. Every farmer who trains himself to be a practical and persistent and progressive thinker is hastening the time. The time to think is when you cannot read and when mechanical duties leave your mind largely free.

THE FARMERS' PLATFORM

The Canadian Council of Agriculture has just issued a 53 page pamphlet containing information on the various planks in the farmers' platform, which has been adopted by the three big farmers' organizations in the prairie provinces. The booklet contains, first, an introduction by R. McKenzie, secretary of the council, explaining the reason for publishing the pamphlet, and the purpose for which it will be used. The platform is then given in full. Following this, 21 pages are devoted to the tariff question. It gives a clear comprehensive consideration of the protective tariff in Canada, showing exactly the effect that it has had upon the development of the country, and the way it has been used by combines to exploit the people. There is a great deal of information on the tariff contained in this pamphlet that will not be found in any other publication. Any person at all interested in the tariff question will find something of value in the pamphlet.

Another section is devoted to the discussion of land values, which is one of the planks of the Farmers' Platform. This section shows how easy it would be to impose a tax upon land according to its value, and that it would be fair and equitable. Such a tax would bear more easily upon farmers than does the present protective tariff. It is shown also that a number of countries are already pursuing this method of taxation in varying degrees.

An illustration of the income tax is given, showing how it will produce a large part of the necessary revenue to pay for the war, and that it will force people to pay taxes in proportion to their ability. The inheritance tax on large estates is also described and the British system is set forth rather fully. Another section shows the necessity of a graduated income tax on the profits of corporations.

A considerable section is devoted to the nationalization of railways, telegraphs and express services. The situation throughout the world is described and the various handicaps that Canada has suffered from private ownership. The argument in favor of public ownership is also given.

Other sections are devoted to the control of natural resources, direct legislation, publication of campaign funds, the abolition of patronage, provincial autonomy in liquor legislation, and the extension of the franchise to women. The booklet will be very valuable to anyone who wishes to be informed on the big national questions of the day. Copies of the platform may be secured at 20 cents each postpaid, or ten copies for \$1.50 postpaid, either from the Canadian Council of Agriculture, Winnipeg, or from the Book Department, The Grain Growers' Guide, Winnipeg.

Announcing New Series "E" McLaughlin Leaders in All Points of Merit

The New McLaughlin Models
Eclipse all Previous Standards
of Beauty and Value

EVEN more graceful in design with greater power the new series "E" more than maintains the supremacy accorded "Canada's Standard Car" for eight successive seasons.

The famous McLaughlin valve-in-head motor develops more power than any other type of motor of the same bore and stroke, and develops this reserve power with the minimum gasoline consumption. Every mechanical feature of McLaughlin cars has been perfected to the same high standard of efficiency as the motor.

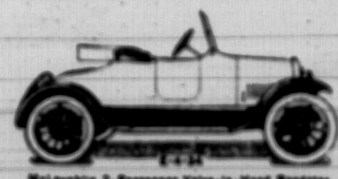
McLaughlin designers and engineers have built 12 body styles of rare beauty—worthy masterpieces of our coach builders' art. This complete line of 12 new models built in one group of factories and distributed by 12 branches and over 300 dealers from coast to coast includes a car for every need.

See the new series "E" before you buy your car.

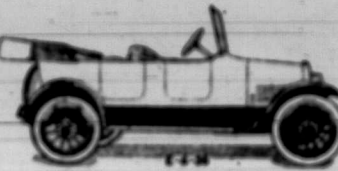
SEND FOR NEW CATALOGUE

WHICH BETTER AUTOMOBILES ARE BUILT.
McLAUGHLIN WOULD BUILD THEM.

See the new series at the nearest McLaughlin Branch or dealers' showrooms.



McLaughlin 2-Passenger Valve-in-Head Roadster



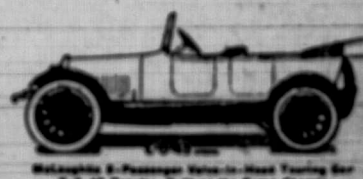
McLaughlin 4-Passenger Valve-in-Head Touring Car



McLaughlin Light Six Valve-in-Head Touring Car
6-6-42 is a Heavy Roadster Built on the Same Chassis



McLaughlin 2-Passenger Valve-in-Head Roadster
6-6-42 Regular. Built on the Same Chassis



McLaughlin 4-Passenger Valve-in-Head Touring Car
6-6-42 Regular. Built on the Same Chassis



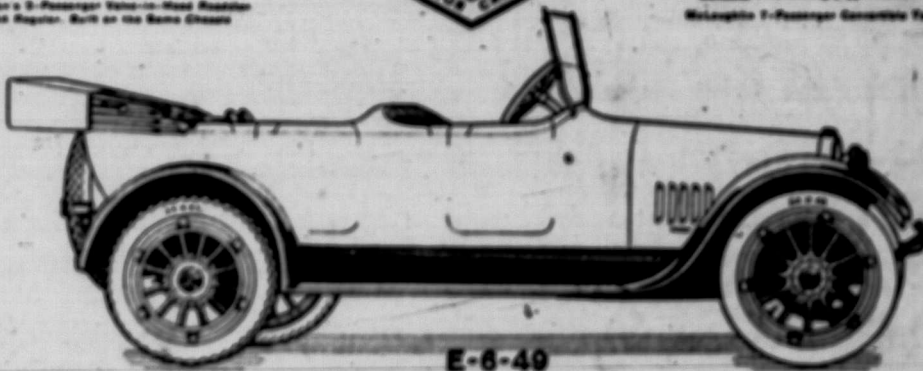
McLaughlin 4-Passenger Valve-in-Head Touring Car



McLaughlin 2-Passenger Sedan



McLaughlin 7-Passenger Commercial Touring Motor



E-6-40

McLaughlin 7-Passenger Valve-in-Head Touring Car

The McLaughlin Motor Car Co. Limited, Oshawa, Ont.

"EASTLAKE" TANKS

THE BEST MADE ANYWHERE.

The Heavy Galvanized Tubing is lapped on.
The Angle Iron Braces are formed around the tubing.

Side Seams have double row of rivets.
Bottom is turned up inside the strongest method known.



Our Tanks are **RIGHT** in EVERY RIVET

You can get any kind of tank in any size from us including HOUSE TANKS—CISTERNS knocked down, (these are made for setting up with very little work) HOG TROUGHS—GASOLINE TANKS—WAGON TANKS.

Ask for our large Catalogue "T"—It's free.

The METALLIC ROOFING CO., Limited
797 Notre Dame Avenue WINNIPEG

WHEN WRITING TO ADVERTISERS PLEASE
MENTION THE GUIDE



IS YOURS A
HARDWOOD
FLOOR?
HOME?

Has it that modernized appearance that adds so much to your entire household furnishings, and reduces housework to a minimum.

For Illustrated Catalogue and prices of Seaman-Kent Floors, write—

THE SEAMAN-KENT CO. LTD.
104 UNION TRUST BUILDING WINNIPEG CANADA