

"ST. AUGUSTINE"
REGISTERED

The Perfect Communion Wine

In use in hundreds of churches in Great Britain, West Indies, The United States, & etc.

Cases 12 Qts. \$4.50; 24 Pts. \$5.50 F.O.B. Brantford.

J. S. Hamilton & Co. Brantford
ONTARIO.

Manfrs. and Props. "St. Augustine Wine"

Telephone - - Main 7405

We are equipped to produce Printing Matter that will attract attention anywhere. Our prices are inducing and should attract the shrewd business man—try us.

The Monetary Times Printing Co., of Canada, Limited

62 Church St., Toronto, N.-W. Cor. of Court St.



CHURCH AND MEMORIAL WINDOWS

STAINED GLASS
Designs and estimates submitted
LUXFER PRISM COMPANY
LIMITED
100 King St. West Toronto.

A discovery of vast importance to Biblical historians is reported from Berlin by The Daily Telegraph. It appears that Professor Reiser, who has been carrying out the excavations on the site of the Israelish capital in Samaria, has unearthed a hundred clay tables covered with inscriptions, which are believed to form a portion of the archives of King Ahab, a contemporary of the Prophet Elijah. These inscriptions, which in quantity alone constitute the most remarkable archaeological find that has been made in Palestine, are not cut into tables, but are written in old Hebraic characters with the intensely black ink found in the Egyptian papyri between one thousand and two thousand years before Christ. One of them is a letter to Ahab from the King of Assyria who, Dr. Yahuda believes, was either Assurbanipal or his son, Shalmanesser II. Another table contains a detailed inventory of the furniture in the Royal Palace, but further particulars of the find have not yet become known. Nevertheless, it is evidently destined to provide convincing confirmation of certain phases of Old Testament history, which some of the modern critics have been in the habit of treating as altogether mythical.

One of the most extraordinary and fantastic Christian places of worship in the world is the Cathedral of Moscow, known as Vasilj Blajenni, strange not only in outline and conception, but even stranger in its history. No one knows the architect's name, but the story goes that the Czar ordered his eyes to be put out directly the church was completed, so that he should never be able to surpass his work. The idea of the building was inspired by the wickedest and maddest monarch who ever sat on a throne—Ivan the Terrible, Czar of Muscovy. The architecture is in every respect extravagant and barbaric and the colouring is garish in the extreme. It has nine chapels, roofed by nine cupolas, each different and each stranger than the other. One resembles a pineapple, another a melon, a third is said to ape a hedgehog in its appearance, and the rest are more or less grotesque. Some

A Physician's Testimony for Labatt's Ale

"We find that the ale uniformly and well agreed with the patients, that it stimulated the appetite, and thereby increased nutrition. The taste, likewise, is always highly spoken of. In nervous women, we found that a glass at bedtime acted as a very effective and harmless hypnotic."—SUPERINTENDENT OF LARGE U. S. HOSPITAL.

P. BURNS & CO.

WHOLESALE AND RETAIL DEALERS IN

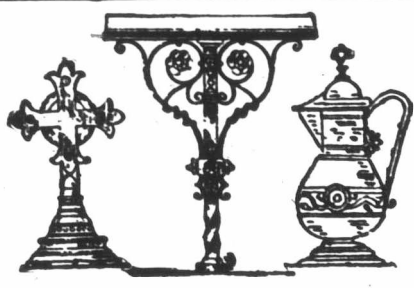
COAL AND WOOD

HEAD OFFICE: 49 King Street East, Toronto
ESTABLISHED 1856. TELEPHONE 181 AND 182

Office and Yard, FRONT ST. near BATHURST. Telephone No. 449 and 2110
Office and Yard, PRINCESS STREET DOCK. Telephone No. 190

DANIEL STONE
UNDERTAKER

82 West Bloor St. Telephone North 36



EAGLE AND RAIL LECTERNS

Altar Rails, Crosses, Vases, Desks, etc.; Candlesticks, Vesper Lights, Memorial Brasses, Chandeliers, and Gas Fixtures, Communion Services, made or refinished. Electrical Contractors
CHADWICK BROS.
Show Room 191 East King St. Hamilton
Factory, Oak Avenue, near Barton St.
Send for Catalogue

ALEX. MILLARD

Undertaker and Embalmer

359 Yonge Street, TORONTO
Telephone Main 679



CHURCH BRASS WORK of every description made to order on shortest notice. Designs furnished and satisfaction guaranteed.
KEITH & FITZSIMONS, LIMITED
111 King Street West, Toronto

BELLS.

Steel Alloy Church and School Bells. Send for Catalogue. The C.S. BELL CO., Hillsboro, O.

The Testimony of Science to the Credibility of the Book of Jonah

A VINDICATION OF THE NARRATIVE OF HIS ADVENTURE WITH THE WHALE

By
Rev. J. W. BEAUMONT,
D.D., M.D.

In Pamphlet Form,
Price Five Cents.

Canadian Churchman Office
36 Toronto Street, Toronto, Ont.



MENEELY BELL CO
TROY, N.Y. AND
177 BROADWAY, N.Y. CITY

BELLS

160 Acres of Land for the Settler

Large areas of rich agricultural lands, convenient to railways, are now available for settlement in Northern Ontario. The soil is rich and productive and covered with valuable timber. For full information regarding homestead regulations and special colonization rates to settlers, write

The Director of Colonization
DEPARTMENT OF AGRICULTURE
TORONTO

WEEKLY OFFERING ENVELOPES

For Church, Sunday School and Society use. Printed numbered and dated for each Sunday in the year.
Duplex Envelopes An envelope to be used for both Congregational revenue and Missions.
Church Supplies—Freezers, Record Books, Communion Registers, Marriage Certificates.

Send to-day for Price List
THE JACKSON PRESS, PRINTERS AND BOOKBINDERS, Kingston, Ontario

are gilt; others are painted in brilliant hues. Indeed, the only description is that it is a nightmare of a church, the fitting legacy of a ruler who grilled his counsellors in frying pans and clothed his subjects in bearskins in order that trained dogs might worry and tear them to pieces.

SEVERAL NEW FEATURES

will be included in all policies issued after the beginning of 1911 by The Great-West Life Assurance Company.

Not the least of these is the Total Disability Clause—making a provision for the insured in the event of his becoming totally incapacitated. Premiums remain just as low as ever, and we anticipate that the same high profit returns will mature to policyholders in future as have earned for The Great-West Life their enviable reputation. If you are interested in this new special addition and would like to get fullest possible information, write NOW—stating age—to

The GREAT-WEST LIFE ASSURANCE COMPANY
HEAD OFFICE, - WINNIPEG

Down Quilts

All sizes from the large double bed to the smallest cradle, covered with Silk or Satin in daintiest designs and colors, sometimes combining plain color and fancy design, very often all fancy design; and also all plain color in one or two colors. Old quilts are also made over and renovated when required or made up to match the drapings of a room

Your enquiries solicited and quotations furnished

JOHN CATTO & SON
55-61 King Street East, TORONTO

CHURCH FURNITURE

Catalogue of Pews, and Chancel Furniture, mailed free upon request.
The Blonde Lumber & Mfg Co. Limited
— Chatham, — Ont. —

MENEELY & CO. WATERVLIET, (West Troy), N.Y.
The Old Reliable Meneely Foundry. Established nearly 100 years ago
CHURCH, CHIME, SCHOOL & OTHER BELLS



Church Brass Work
MEMORIAL BRASSES
RAILS, VASES.

PRITCHARD ANDREWS CO OF OTTAWA, LIMITED
133 Sparks St. OTTAWA.

The Canadian Churchman is undoubtedly a first-class advertising medium. It circulates extensively in the homes of the clergy and laity. Our advertisers assure us that it is an excellent paper to advertise in as it brings most satisfactory returns.

TORONTO

Subscription

NOTICE.—Toronto owing

ADVANCE, \$1.1

ADVERTIS

ADVERTISING medium for a

Church Journ

BIRTHS, M

Deaths, etc.

THE PAPER

a Family Pap

Canada, and

CHANGE OF

not only the

also the one

DISCONTINU

received, it w

tinue the pap

dollars per a

RECEIPTS.—

tion is paid,

postage stan

or four week

CHEQUES.—

fifteen cents

POSTAL NO

CORRESPON

of the CANA

than Friday

Address all c

Phone M

Offices—U

NOTICE.

States, \$2.1

Los

Morning-

Evening-

Morning

Evening

Morning

Evening

Morning

Evening

Appro

Sexages

Ham,

the ch

The nu

many o

Holy

Proc

Offer

Child

Gene

Holy

Proc

Offer

Child

Gene

"Lest

The

as a

sure ;

tions

ambit

run th

of his

as to

We a

Seasc

Fasti

Chur