

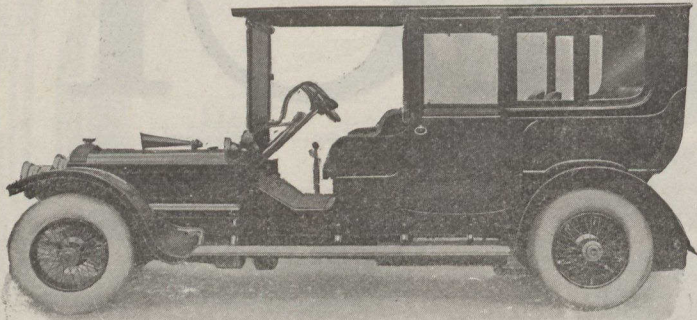
"HOOPER" Motor Bodies

LONDON BUILT AND LIGHTEST

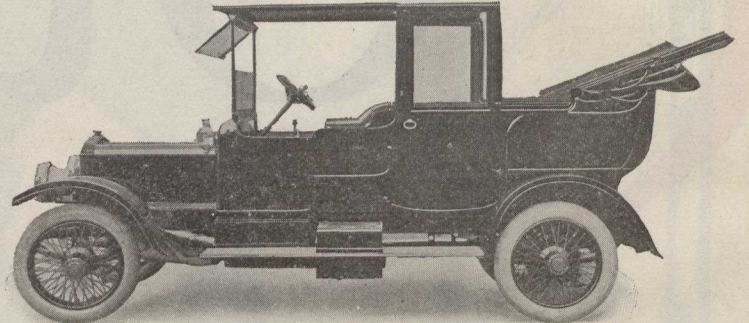
AS BUILT FOR

HIS MAJESTY THE KING
H.M. QUEEN ALEXANDRA

HER MAJESTY THE QUEEN
H.R.H. THE DUKE OF CONNAUGHT



Now Building For
HIS MAJESTY THE KING



Built Specially For
H.R.H. THE DUKE OF CONNAUGHT
April, 1912

COMPLETE CARS FOR IMMEDIATE DELIVERY.

REPAIRS all kinds---body and CHASSIS.

EXPERIENCED ENGINEERS.

TYRES, PETROL, LUBRICANTS, ACCESSORIES.

PRICES (INCLUDING DELIVERY) UPON APPLICATION TO

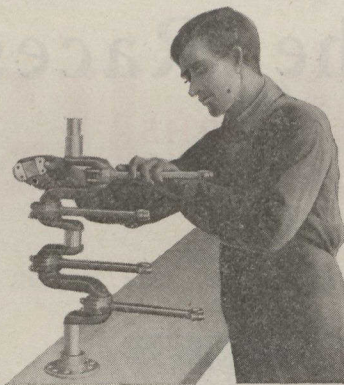
HOOPER & CO.,

St. James's Street,
London, S.W.

Here is shown the assembly of crankshaft and connecting rods; and the careful adjustment of the connecting rod bearings.

Please note the center main bearing and the extra-generous length of the two end bearings. A third crankshaft bearing is unusual in a motor cast en bloc, except in cars of \$2,500 or higher.

So, in the \$1,000 Hupmobile, the crankshaft has three instead of two supports to help it withstand the strains to which this part necessarily is subjected.



Hupmobile

We believe the Hupmobile to be, in its class, the best car in the world.

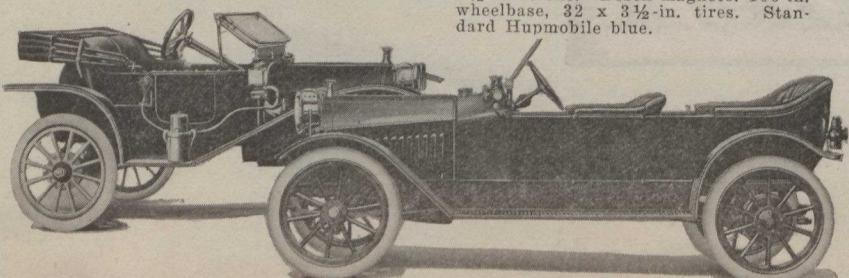
That this belief is justified, is proven by the large proportion of Hupmobile sales that come through Hupmobile owners and their recommendations to others.

Evidently, no one has shown them a car as good or better in its class.

Hupp Motor Car Company
Desk A. Windsor, Ont.

Standard 20 H.P. Runabout, \$850.
F. O. B. Windsor—4 cylinders, 20 H. P., sliding gears, Bosch magneto. Top, windshield, gas lamps, and generator, oil lamps, tools and horn. Roadster, 110-inch wheelbase, \$950.

Long-Stroke "32" Touring Car, \$1,000
F. O. B. Windsor, including windshield, gas lamps and generator, oil lamps, tools and horn. Three speeds forward and reverse; sliding gears. Four cylinder motor, 3 1/4-in. bore and 5 1/2-in stroke. Bosch magneto. 106-in. wheelbase, 32 x 3 1/2-in. tires. Standard Hupmobile blue.



Saskatchewan is the Grain-Growing Province of Canada.

MOOSE JAW

is the distributing point of Saskatchewan, situated in the heart of the wheat-growing area and enjoying the benefits of distributing facilities which are unexcelled.

MOOSE JAW has been chosen as the location for some of the largest industries and distributing houses in Western Canada, and will within six months have a pay-roll of \$1,000,000 per month.

IF YOU have commercial or other interests in Western Canada, it will be to your advantage to learn more about MOOSE JAW, the Industrial City of Saskatchewan, and the most rapidly growing commercial centre of the Prairie Provinces.

For special reports and literature, WRITE TO-DAY to

H. G. COLEMAN, Secretary, Board of Trade

Moose Jaw, Sask.

Kindly state where you saw this advertisement.