



Dominion Limited

Every Dominion "Limited" is built entirely in our own factory at Walkerville.

Our output is not so large that it will tempt us to slight even the smallest detail in any car.

For thoroughness and honesty of construction, long life and efficient service, we challenge your comparison with any car, even with those selling at \$500 to \$1,000 higher in price.

The motor is cast from the finest grey iron. The crank shaft is of finest vanadium steel. The frame is of special carbon steel, pressed cold, with extra wide flanges for strength. The straight line shaft drive is through nickel steel gears of great strength, heat-treated.

Front axle is heavy and strong, drop-forged, I-beam section, heat-treated.

Finest imported ball-bearings are used wherever they will add to the efficiency of the car.

The wheels have extra large spokes of second-growth hickory. Powerful brakes with 12-inch drums.

Throughout the entire car this liberal, almost lavish, policy is carried out.

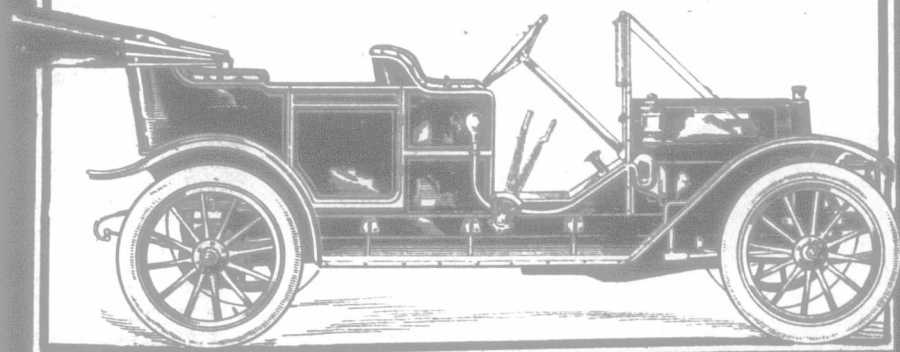
The result is a motor car that is in the strictest sense of the word, a car of quality.

Our handsome catalog describing and illustrating the Dominion "Limited" will be sent on request. Write for a copy today.

Dominion Motors, Ltd.

38 Dominion Boulevard, WALKERVILLE, ONT.

We also make Trucks for Commercial use



KELOWNA IRRIGATED FRUIT LANDS

THE PRIZE WINNING DISTRICT OF THE OKANAGAN VALLEY

The new sub-division, "Glenmore" is being placed on the market. Ideal location, one-half mile from town limits. The soil varies from a sandy loam to a light clay loam. The land is practically level and a good portion prepared for planting.

The company is installing one of the most perfect irrigation systems in British Columbia.

Of winter, as the plainsman understands it, there is none. The temperature seldom goes down to zero.

Kelowna fruit takes the highest place at exhibitions. Its orchards are free from fruit pests of all kinds.

Apples have given results of \$750.00 per acre. Crop from four-year-old orchard of ten acres sold for \$3,000. Nineteen acres mixed orchard produced fruit worth \$9,000.

FOR PRICES AND FULL PARTICULARS, CALL AT OFFICES, OR WRITE

THE CENTRAL OKANAGAN LANDS, LIMITED, KELOWNA, B.C., or DOMINION TRUST CO., LTD., REGINA, SASK., and CALGARY, ALTA.

Granite Harvester Oil

For Reapers, Threshers, Plows, Harrows



Insures better work from the new machine and lengthens the life of the old. Wherever bearings are loose or boxes worn it takes up the play and acts like a cushion.

Changes of weather do not affect it.

Gasolene and Kerosene Engines

Standard Gas Engine Oil

is the only oil you need. It provides perfect lubrication under high temperatures without appreciable carbon deposits on rings or cylinders, and is equally good for the external bearings.

Steam Traction Engines and Steam Plants

Capitol Cylinder Oil

delivers more power, and makes the engine run better and longer with less wear and tear, because its friction-reducing properties are exactly fitted to the requirements of steam traction engines and steam plants.

Traction Engines, Wagons, Etc.

Mica Axle Grease

makes the wheel as nearly frictionless as possible and reduces the wear on axle and box. It ends axle troubles, saves energy in the horse, and when used on axles of traction engines economizes fuel and power.

Every dealer everywhere. If not at yours, write for descriptive circulars to

The Imperial Oil Company, Limited

HOMESITES at VANCOUVER ERINDALE

Large 50-foot lots, near the city, ten minutes walk from a fine bathing beach, beautiful scenery, sloping gently south, very light clearing and only waiting for the completion of the Second Narrows bridge to bring you a huge profit. Roads are being cleared and graded through the property NOW. The bridge will be completed in a year and a half.

CAR FACTORIES AND GOVERNMENT DRY DOCKS

the construction of which is just starting, further out, will make values double here in a year. In five years this property will be built up solid and in the heart of a busy end of the city. How much will it be worth then?

I am offering a limited number of these lots at \$300 each

Terms:—One-fifth cash. Balance in eight quarterly payments at seven per cent. per annum.

WE GUARANTEE ALL LOTS TO BE HIGH AND DRY, FREE FROM LARGE ROCK AND GULLIES OF ANY KIND, TO HAVE GOOD SOIL AND NOT MORE THAN A ONE PER CENT. GRADE

Out-of-town customers are allowed sixty days in which to verify the truth of this. If not satisfied on inspection within that time your money will be returned.

To obtain maps and particulars fill up and mail this coupon.

NAME

ADDRESS

D. MacLURG, 340 Pender St., Vancouver, B.C.
Please send me particulars of ERINDALE.

Take care of 10 acres of Kootenay Fruit Land for 5 YEARS and it will take care of you for THE REST OF YOUR LIFE

J. M. Fraser harvested 20 tons of potatoes from a measured acre.
J. T. Bealby picked from three trees this year cherries that actually sold for \$250.

Small orchard tracts of similar character for sale on easy payments. Send for our free illustrated booklet.

WESTERN CANADA INVESTMENT CO.
P. O. DRAWER 1042 NELSON, B. C.