

DEPOT AND WHARF

RESTAURANT AND LUNCH COUNTER.

OPPOSITE C. P. R. STATION, PETERBOROUGH, ONTARIO DIVISION.

REFRESHMENTS, * CONFECTIONERY, * FRUITS, * CIGARS, * &c., * &c.

OYSTERS! OYSTERS!

KEPT CONSTANTLY ON HAND IN SHELL, BULK, OR ORDER.
Orders sent by Conductor or by Wire promptly attended to.



R. R. HAMILTON, 184 GEORGE STREET.

MRS. G. BROWN,

386 WATER STREET,

Lunch Parlor, Groceries, &c.

Lunch, Hot Tea and Coffee,

AT ALL HOURS.

JAMES COUGHLIN,

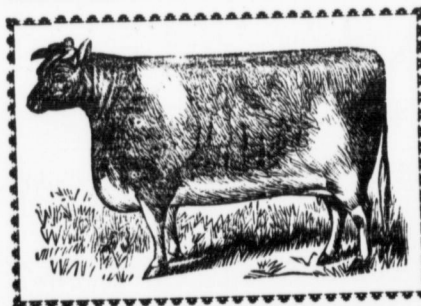
DEALER IN

Groceries, Provisions, Confectionery and Fruit in Season.

Goods always fresh, of the best quality and at finest prices.

Stationery and Postage Stamps always on hand.

236 CHARLOTTE STREET, Corner of Aylmer.



D. WHITE BUTCHER.

Fresh and Salt Meats of all kinds,

Sausages, &c., always on hand.

Goods delivered to all parts of the town.

237 Simcoe Street.