

It takes on the average about 30 days for the newly hatched larva to develop to sexual maturity.

Sheep Keds are found wherever sheep are kept in domestication. The life of this insect is spent entirely on the sheep's body, the one exception being the few that may fall from one sheep to gain a position on another or the migration from ewe to lamb. The Keds being without wings and having legs not well adapted for speed do not travel very far. Their migrations consist of transfer from sheep to sheep when the wool offers a bridge during close contact. Removed from the body of the sheep the Keds will die in eight days, on the other hand the pupa can live apart from the sheep if the weather is cool and the transformation thereby delayed.

**Damage from Ked Infestation.**—The irritation and worry caused the unfortunate sheep by this insect, is sufficient to remove all chance of profit from the flock, unless allayed or removed. The proboscis of the Ked is lance like and penetrates the sheep's skin, this is accompanied by pain and the injecting of an irritant salivary secretion. Itchy red pimples appear at the point of penetration, these remain for a day or more. Heavy infestations

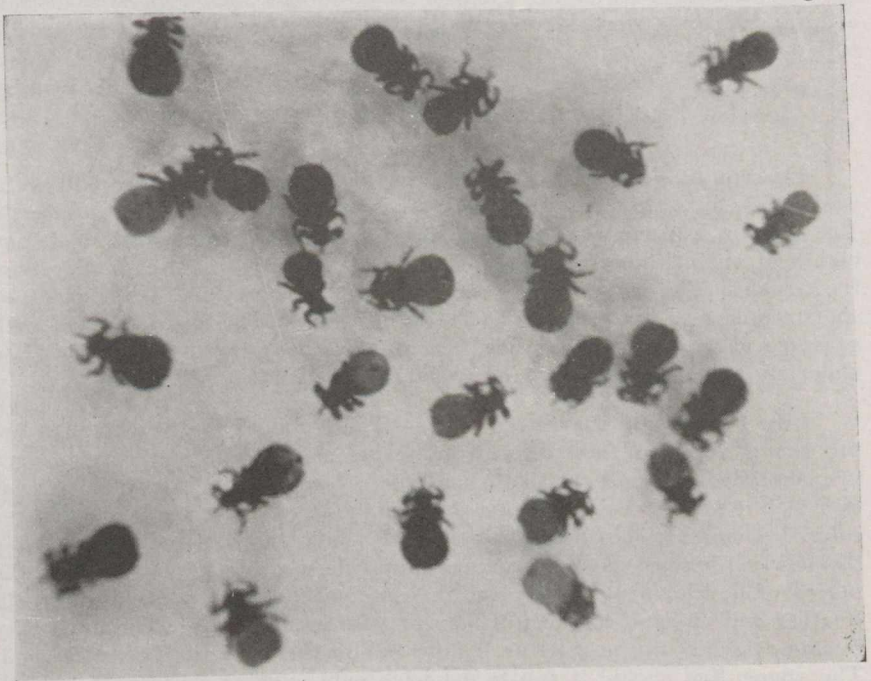


Figure 17.

*Sheep Keds or "ticks." This pest causes much misery and unthrift in sheep and lambs. Be humane and dip the flock at least once a year — better twice a year. The sheep will pay for it — in better wool and better lambs.*