

A LITTLE CHILD'S FANCIES.

I think that the world was finished at night,
Or the stars would not have been made;
For they wouldn't have thought of having the light
If they hadn't have seen the shade.

by Luigi Ricci, which was recently performed at the Politeama of Piacenza, and which had a fair success; "Romilda di Sainuzzo," by Adolfo Baci; "Marion Delorme," by Ponchielli, who is said to be now setting to music a still later one, entitled "Janko," libretto by Enrico Ponza-

M. BARTHOLDI, the sculptor, recently interviewed by a correspondent of one of our American dailies, expresses the hope that his already famous statue will be completed within a year. But little remains to be done on the trunk, though a portion of the right arm that supports the torch yet requires a large amount of labor.

It is curious that comparatively little interest has been excited in literary circles by the fact that by the death of the Comte de Chambord one of the great historical dynasties of France becomes extinct. The House of Bourbon came to an end with Henri V., as did that of Valois with Henri III.

—It is announced that Anthony Trollope left behind him an autobiography, which will soon be published. It is a frank record of his literary work and opinions. His account of the poverty and misery amid which his boyhood and youth were spent will probably be a revelation to those who were most intimate with him in later years.

The South Kensington authorities, having shown what they can do in the way of organization by making the Fisheries Exhibition one of the most striking successes London for years has seen, are now sighing for other worlds to conquer.

A LATE article in the London Fortnightly Review gives the following critique on Emerson: Emerson's mind was no less Yankee than Platonic. He exhibits, on the one hand, a sympathetic assimilation of idealism; on the other hand, an unconscious inherited realism.

DR. EDWARD EGLESTON, the novelist and historian of colonial times, resides with his daughter, Mrs. Seelye, at Owl's Nest, on the southeastern arm of Lake George.

projecting eaves, covering the round top of a knoll fifty yards above the lake, which it looks across, against a savage-looking hill on the opposite shore, composed apparently of massive boulders wildly tumbled together in the sport of nature, and sparsely clothed with shrub, pine and hemlock.

OUR CHESS COLUMN.

TO CORRESPONDENTS.

J. W. S., Montreal.—Letter and paper to hand. Thanks.

The formation of a Workingmen's Chess Club which has recently taken place in Bradford, England, is a proceeding worthy of all imitation, and we trust that in a short time it will be followed in every community where a sufficient number of players may be found to make such an undertaking a thing of easy accomplishment.

Land and Water in speaking of the establishment of the Bradford Club says: "We thoroughly approve of chess-associations amongst the 'sons of toil.' Working-class chess-players, according to our experience of them, are, as the almost invariable rule, well conducted, thoughtful and courteous men.

Mr. Steinitz was to have sailed from Liverpool on September 26th, for New York. If his departure was not delayed beyond his expectations he is due here early next week. He will remain in New York a few days only and then proceed to Philadelphia.

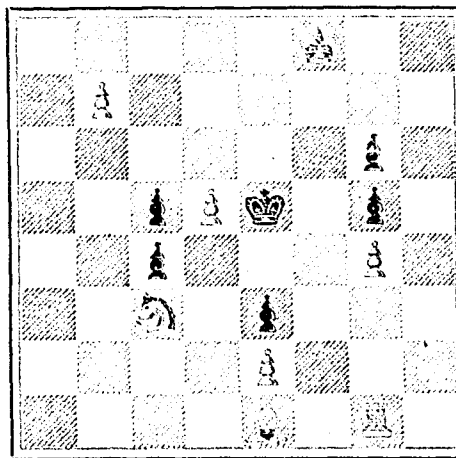
CHESS.

TORONTO CHESS CLUB ELECTION OFFICERS.—The Toronto Chess Club met at the Free Library Building last night, when, after the transaction of routine business, the following officers were elected:—John L. Blaikie, President; A. C. Meyers, Vice-President; C. W. Phillips, Secretary-Treasurer; J. N. Pamshon, Auditor; J. W. Gordon, W. Boulbee, E. B. Freeland, Managing Committee; J. H. Gordon, W. Boulbee, C. W. Phillips, Match Committee.

PROBLEM No. 457.

By J. Thursby.

BLACK.



WHITE.

White to play and mate in two moves.

SOLUTION OF PROBLEM NO. 455.

White. Black.
1 B to K B 4 1 Any
2 Mates acc.

GAME 531th.

THE INTERNATIONAL TOURNAMENT.

Played in the International Tournament London, 1883, between Messrs. Steinitz and English.

(Steinitz Gambit.)

WHITE.—(Mr. Steinitz.) BLACK.—(Mr. English.)

- 1 P to K 4 1 P to K 4
2 P to Q B 3 2 Kt to Q B 3
3 P to B 4 3 P takes P
4 P to Q 4 Q to R 5 ch
5 K to K 2 5 P to Q 4 (a)
6 P takes P 6 Q to R 5 ch
7 K to B 2 7 P takes P ch
8 P to K Kt 3 (c) 8 P to Q 3 (d)
9 K to Kt 2 9 B to Q 3 (d)
10 P takes Kt (e) 10 P takes R P
11 Q to B 3 11 B takes Kt (Q) ch
12 K takes Q 12 Q takes P ch
13 B to K 2 13 Q to B 3
14 Q to K 2 (f) 14 Kt to K 2
15 B to Kt 2 15 P takes P
16 Kt to K 1 16 Q to K 3
17 P to B 4 17 B to K Kt 5
18 Q to K B 2 18 Castles (K R)
19 Q to K 4 19 Kt to B 4
20 Kt takes B (g) 20 Kt takes B
21 R takes Kt 21 Q takes Kt
22 Q to R 4 22 P to K R 4
23 R to K Kt 3 23 K R to K
24 R takes B 24 Q to Q 8 ch
25 K to R 2 25 Q takes Q R
26 Q takes Q 26 P takes Q
27 K to Kt 3 27 P to Q 7 (h)
28 B takes P 28 R to K 7
29 P to Kt 4 29 R takes P
30 R to K 30 R to Q 6 ch
31 K to R 4 31 P to Kt 3 (i)
32 R to K 7 32 P to Kt 5 (j)
33 R to K 33 R to Q 5 ch
34 K takes P 34 R takes P
35 Resigned.

NOTES.

Notes by Messrs. English, Zukertort, Steele and Rosenbann.

- (a) This reply to the Steinitz Gambit was, of course, introduced by Zukertort.
(b) Playing for an early draw Zukertort continues with B R to Kt 5 ch.
(c) The master, naturally desirous of upholding the acknowledged beauty and soundness of his invention, makes a (chess) criminal attempt to avoid a draw.
(d) 9 Kt takes P; 10 P takes P, Q to Kt 5, would be a more simple and safer line of play.
(e) After this move White is doomed, no matter what he plays, but 10 Q to K would have equalized matters at least.
(f) If 11 Q to K 4 ch, Black replies best 11 Q to K 2.
(g) The following exchanges of blows with the authorities only accelerate White's destruction. But he has no feasible way of escape.
(h) Promotion forming.
(i) The process of pinning seems unnecessary, because of the prisoner's weakness.
(j) Marwood.—(Illustration Herald).

MEASUREMENTS OF THE DEPTH OF SLEEP.

A correspondent of Science briefly summarizes the results of some interesting experiments made by Munninghoff and Piesbergen, pupils of Vierordt, towards determining the depth of sleep in the human subject. The principal worked upon was the simple one of considering the depth of sleep as proportional to the strength of the sensory stimulus requisite to awaken the sleeper or to call forth some decided sign of awakened consciousness.

BANK OF MONTREAL.

NOTICE is hereby given that a Dividend of FIVE PER CENT.

upon the paid-up Capital Stock of this Institution has been declared for the current Half-Year, and that the same will be payable at its Banking House in this city, and at its Branches, on and after

SATURDAY, THE FIRST DAY OF DECEMBER NEXT.

The Transfer Books will be closed from the 16th to the 30th of November next, both days inclusive.

By order of the Board, W. J. BUCHANAN, General Manager,

Montreal, October 23, 1883.

40 CARDS all lap-corner, Gilt Edge, Glass, Motto and Chromo, Love Letter and Case name in gold and jet, 10c. WEST & CO., WESTVILLE, CONN

THIS PAPER MAY BE FOUND ON FILE AT GEO. P. ROWELL & CO'S Newspaper Advertising Bureau (10 SPRUCE STREET), WHILE ADVERTISING CONTRACTS may be made for it in NEW YORK.