

is the large brick depot, erected by the C. P. R. a year ago, and as he turns towards the town his attention is immediately attracted by the number of brick buildings with which the business street is lined. Last year saw a number of changes in the town, the principal ones being the erection of a flour mill and a large brick block, the latter being built by A. E. May, contains two large stores, one occupied by himself as an implement warehouse, the other by Chas. May, who, a short time ago, bought out the furniture stock of D. W. Munroe and moved it to this stand, which is a particularly good one for this line of business. The mill is owned by C. J. Hurt, late of Hurt & McKay, millers, of Boissevain, Man. It has a capacity of 150 barrels per day and adjoining it is a 35,000 bushel elevator. The machinery was supplied by the Stratford Mill Building Co., of Stratford, Ont., and is of the latest design. The mill started operations on the 1st of January last. Among the changes in ownership of businesses here we notice that A. E. Webb, butcher, has been succeeded by Smale & Treavor and Copplein & McClocklin, general merchants, by C. J. McClocklin. The amount of building done in the town of Carberry last year totals \$64,000 and there has also been a large number of barns and granaries erected in the surrounding district.

Between Carberry and Brandon there are three stations, Sewell, Douglass, and Chater, the principal one being Douglass where there are two general stores, a butcher shop, bakery, two blacksmith shops, drug store, lumber yard and implement warehouses. The farmers in this district devote their attention principally to wheat raising, with very satisfactory results, as is shown by the amount of grain landed by elevators of which there are three at this point. There had been in the neighborhood of 300,000 bushels marketed to the end of December, and there is still a considerable quantity to come in.

At Chater the Great Northwest Central railway connects with the Canadian Pacific.

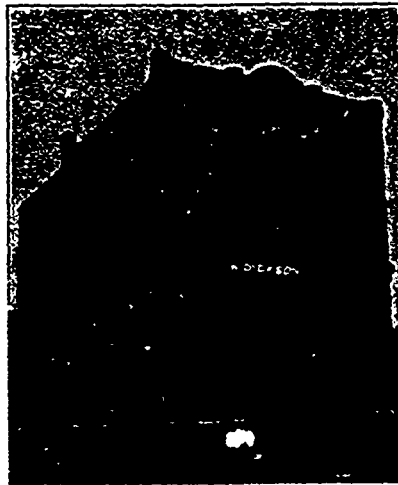
Brandon, the second city of Manitoba, comes next in order west. This was described at length in a special article not long ago, and therefore, need not be referred to again in this.

Kemnay is the first station west of Brandon and is important only as being the junction point of the Souris Brandon branch and the main line.

The district surrounding Alexander seems to be specially adapted to the raising of wheat, very little mixed farming being done. In the town a few changes have occurred in the past year. Several dwellings and a large curling rink have been built, and R. E. Campion has started business carrying groceries and small wares. There are a number of substantial buildings in this town, among them being that of W. Dickson, a photo-engraving of which we show in this issue. Mr. Dickson is one of the leading merchants, and has been here for nine years. In 1895 he erected this building to accommodate his increasing business. On the ground floor he has his stock of general merchandise displayed the upstairs being used as a concert hall. A. F. Elliott also has a general store. The lumber yard is owned by Jas. Forman, who also owns one of the two hardware stores, the other belonging to McHughman. G. R. Kerr supplies the dis-

trict with harness and J. Birtles is the local butcher. In addition to these S. C. Touchburn has a drug store, and W. Goldsmith an implement warehouse, handling the McCormick machines. The Massey-Harris Co. also has a branch implement warehouse.

The territory from which the town of Griswold receives its support is somewhat lessened from the fact that three miles south of the railway the land is very light and sandy and a few miles north is located one of the Indian reserves, of which there are a number at different points in the province. The government has a farm instructor living among these Indians teaching them the art of farming, but as a general rule they raise very small crops and the amount of business received from them is accordingly small. The balance of the district, however, is well settled, and as the land is very fertile a large amount of grain is shipped from this station, the total for the past season being about 300,000 bushels. The merchants are showing a praiseworthy spirit in the efforts they are making to improve the condition of their streets and the general appearance of the town, and it would be well if their



Store of W. Dickson, Alexander, Man.

example would be followed by other places, as with care and a little expense our towns could be made very pretty and homelike. We print in this issue a cut of H. A. Scarth's general store building. Mr. Scarth has been here for nine years, and has worked up a very profitable business. A. E. Hill, general merchant, has one of the oldest and best businesses in town. Speers & Paul also have a general store here. In the hardware line there are two representatives at present, M. G. McEwen and A. H. Speers, the latter also running a butcher shop, J. H. Denoon also being in the butcher business. J. G. Humphry carries a very good stock of furniture. In addition to these there are two drug stores, a harness shop, bakery and confectionery, implement warehouses, and a lumber yard, owned by A. Chisholm. A local paper, The Ledger, was started here about a year ago.

Oak Lake presents quite an imposing front, as its main street, which faces the track, is lined by a long row of very good buildings in which are displayed a number of large stocks of goods. It has been built in a grove of poplars, which adds a great deal to its

appearance. A very fine stretch of farming country lies to the north which is thickly settled, but to the south the land is very light and is only good for mixed farming. There are four elevators here and a large flour mill, the latter the property of Leitch Bros. This is one of the largest mills in Manitoba, having a capacity of 250 barrels per day, and a wheat storage capacity of 1,000 bushels. This firm has also a 35,000 bushel elevator and a 25,000 bushel warehouse at this point and an elevator at Koutledge. They make the well-known "Anchor" brand of flour, which is shipped in large quantities to the east and to British Columbia and is recognized as one of the best brands on the market to-day. There are at this point four general stores, two hardware stores, drug store, butcher shop, two lumber yards, furniture store, two harness shops, etc., and as the different merchants for the most part carry large stocks it will be readily seen that this is an important business point. During the last year a newspaper, "The News," has been started here. R. J. Grey has bought the furniture stock of A. Cameron and George Wright has had the old Thompson house brickveneered and the inside overhauled and remodelled, thus converting it into a first-class commercial hotel. There was also a board of trade inaugurated last fall. Oak Lake, from which this station takes its name, is about six miles from town and is a favorite camping ground for the district during the summer months.

Virden—The country from which this town receives its support is largely a wheat growing district, although the farmers are each year going in more for mixed farming. A large number of settlers have come to this locality of late years and as a result the shipments of wheat and cattle have been largely increased, the output of the six elevators was 400,000 bushels from the crop of 1898.

This town was incorporated in 1890 when it had a population of about 600, which has steadily increased until now it is in the neighborhood of 1,400. It has been visited by several very bad fires, but notwithstanding this, its buildings are much above the average of Manitoba country towns. It has six general stores, that of W. J. Wilcox, which is 15x110 feet with basement and upstairs, being one of the largest in this country. J. A. Merriek, McLellan & English, and B. Meek also have large stocks. Two of the hardware dealers, namely Frame and Miller, and the Virden Lumber and Hardware Co., have also lumber yards. The other lines of business are also well represented among the business changes since our last visit we notice that A. Grant's stock of flour and feed has been bought by A. Madril and that Chapman & Co. have started a general store business. The C. P. R. Co. are erecting a large and very handsome depot which will be ready for occupation shortly. The cuts we show of this point were kindly loaned by the Virden Advance.

Hargrave is one of the smaller points on this line, there being but two general stores and a lumber yard, the general store being owned by Cutfield & Halliday, and the lumber yard by E. A. Holmes. The two elevators here handled 250,000 bushels of the 1898 crop.

Elkhorn is the most westerly town in Manitoba on this line of railway. It has four elevators and a mill which speaks well for it as a grain point.