

CHESS.

The proprietors of THE CRITIC offer two prizes—to consist of books on Chess—to those subscribers who shall send in the greatest number of correct solutions during the current year. No entrance fee required.

Mrs. Moseley has the thanks of the Chess Editor for the beautiful Xmas card so kindly sent.

INTERNATIONAL CORRESPONDENCE. TOURNEY

Americans won 27 games.
Canadians " 15 "
Games drawn 10
" To play 8

Total 60

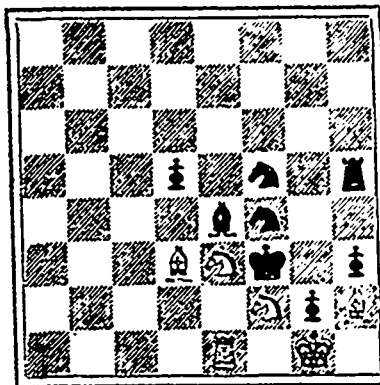
Col. Noyes of Halifax draws with Mr. W. Haller of St. Louis.

Solution of problem No. 110, R to Q4. Solved by C. W. L., Mrs. Moseley and J. W. Wallace. "A very fine problem" J. W. W.

No solutions were received for problem No. 109, and on examination we find the problem defective; although passed by a contemporary as correctly solved by Q to K Kt4.

PROBLEM No 112.

By J. H. Graham, N. Y. From the Montreal Gazette BLACK 8 pieces.



WHITE 6 pieces.

White to play and mate in 2 moves

GAME No. 93.

Played in the International Correspondence match between Mr. J. Bemrose, Montreal, and Mr. C. Nugent, New York.

ROY LOPEZ

- WHITE BLACK
Mr. J. Bemrose. Mr. C. Nugent.
1 P to K4 P to K4
2 Kt to KB3 Kt to QB3
3 B to Kt5 P to QR3
4 B to R4 Kt to B3
5 P to Q3 P to Q3
6 P to B3 P to QKt4
7 B to B2 B to K2
8 QKt to Q2 Castles
9 Kt to KB P to Q4
10 Q to K2 P takes P
11 P takes P B to K3
12 B to Kt5 (a) B to B5
13 Q to Q2 B takes Kt
14 R takes B (b) Q to B
15 B takes Kt R to Q
16 Q to K2 B takes B
17 Kt to Q2 P to Kt5
18 Kt to Kt3 P takes P
19 P takes P B to Kt4
20 R to Q R takes R
21 Q takes R Q to K3
22 Q to Q5 Q to Q3
23 K to K2 R to Q
24 R to Q Q to R3
25 Q to B4 Q to R4 ch
26 K to K R takes R ch
27 B takes R Q to Kt3 (c)
28 B to R5 Q takes B

- 29 Q takes Kt P to Kt3
30 P to KR3 (d) Q to R5
31 K to K2 K to Kt2
32 P to QR4 B to B3
33 P to R5 (e) Q to R4 ch
34 K to K Q to Kt4
35 Q takes RP Q takes KtP
36 Kt to Q2 Q takes RP
37 Q to B4 B to R5
38 Kt to K2 Q to B
39 P to R6 Q to QR
40 Kt to Kt3 (f) Q to B
41 Kt to B5 Q to Kt5 ch
42 K to Q2 Q to B5 ch
43 K to B2 Q takes BP ch
44 K to Kt3 Q to Kt8
45 K to R4 P to QB3
46 Kt to Kt3 Q to Kt3
47 Kt to Q4 B to B7
48 Kt takes P Q to B2
49 Q to Q5 P to R4
50 Q takes KP ch Q takes Q
51 Kt takes Q P to Kt4
52 Kt to R3 P to Kt5
53 Kt to Q4 B takes Kt
54 P takes B P to Kt6
55 P to R7 P to Kt7
56 P Queens P Queens
57 Q to Q5

Drawn Game.

NOTES.

a We should prefer Kt to K3.
b White being unable to Castle with advantage, might have done well to exchange Queens.

c Black now proposed a draw which White declined, considering that his next move would give him an advantage.

d Mr. Bemrose remarks; Mr. Nugent thinks that 9 Q to K8 ch forcing an exchange of Queens would win; but after 30 Q to K8 ch, 30 K to Kt3; 31 Q tks P ch, 31 B to B3; 32 Q tks Q, 32 B tks P ch, 33 K to K2 I think the black Q B P can be forced down or exchanged for the Kt."

Our opinion is that White had good chances of a win, suppose 34 K to Q3, 34 B to K4; 35 Kt to B5 35 P to Q R4; 36 P to QR4. 36 B takes P; 37 Kt to Kt3, 37 B to Kt3; 38 P to B4, 38 B to Kt3; 39 K to B4 &c; any other variations would, we think, bring about the same result, the black King being too far from the scene of action. Mr. Bemrose thinks, however that he missed the following—30 Q tks R P. 30 Q tks R P 31 Q to R8 ch, 31 K to Kt2; 32 P to Kt3, 32 Q ch, 33 K moves, and the black Queen is out of play.

e Kt to Q2 looks tempting at this juncture protecting the centre Pawn, and giving freedom to his Queen, for if 33—Q to Kt4; 34 Q tks RP; 34 Q tks P; 35 Q to Q3, 35 B to R5; 36 Q to B3, 36 Q to Kt8; 37 Kt to B &c. The whole of the ending however is very difficult for both players, and they appear to have given it great study and care.

f If 40 Q to Kt5, 40 Q to R2.—Gazette.

DRAUGHTS-CHECKERS

The proprietors of THE CRITIC offer two prizes—to consist of books on Checkers—to those subscribers who shall send in the greatest number of correct solutions during the current year. No entrance fee required.

TO CORRESPONDENTS.

MR. BROOKS, Dartmouth.—Your solution to problem 123 pleases us very much. It opens up new lines entirely unthought of. Your work on the solution has been done hurriedly, and we would like you to revise

it and give us the result of your further studies.

Shubenscadie is the only other place from which we have received a solution to this problem. We recommend Mr. Forbes to resume the investigation, the position being worthy of further study.

Under the circumstances, and wishing to give all interested an opportunity to study it out—where are Antigonish and Yarmouth?—we withhold the solution for another week. The position in this problem is as follows:—Black men 1, 2, 3, 6, 7, 9, 10, 12, 14, 15, 19; white men 13, 17, 20, 21, 24, 25, 26, 27, 28, 30, 32; black to play and win. We consider this a first-class position, and we believe that few players will find a certain black win without devoting many hours of study to it.

SOLUTIONS.

PROBLEM 146.—The position was: Black men 1, 2, 11, 12, 16, 20, 24; white men 9, 13, 21, 23, 27, 31, 32; white to play. What result?

Table with 2 columns of numbers representing game results for Problem 146.

VARIATION.

1-6, 17 14, 24-28, 23 18 white wins.

GAME XLI.—BRISTOL.

A game recently played in London, contributed with corrections by Sergt. W. Muir.

Table with 2 columns of numbers representing game results for Game XLI.

*The losing move.

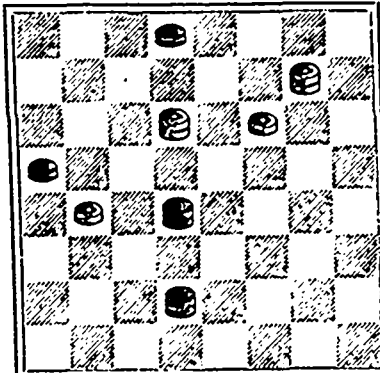
a There is some nice play here. If 31 26, 15,—19, 16 12, 18,—22 I think that white's game is lost, let him play as he will.

b Here black played 5—10 resulting in a draw.

PROBLEM No. 148.

By J. Valentine in the Aberdeen Free Press.

Black men 2, 13, kings 18, 26.



White men 11, 17, kings 8, 10. White to play and win.

We request all players who desire the continuance of the checker department of THE CRITIC to send us a solution of this problem, or at least a postcard expressing their interest in the column.

Advertisement for \$225.00 CASH, 70 Diamond Rings, 50 PAIRS GENUINE DIAMOND SCREW EAR RINGS, 26 Solid Gold and Silver Watches GIVENAWAY. Includes details of a contest and a watch illustration.

Advertisement for Loissette's MEMORY RECOVERY AND TRAINING METHOD. Includes details of the method and contact information.

Advertisement for SALESMEN WANTED and SOLID GOLD PLATED. Includes details of the sales position and watch information.

Advertisement for THE MONARCH BOILER AND HERCULES ENGINE. Includes details of the boiler and engine, a diagram, and contact information.