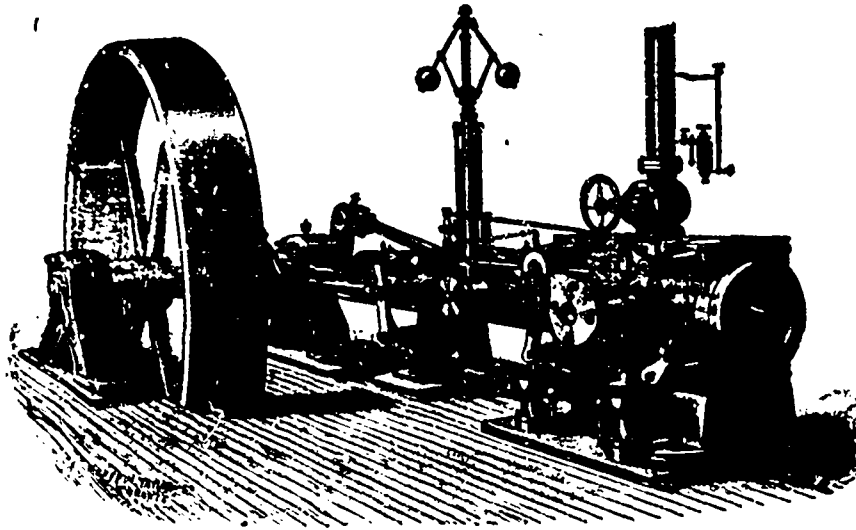


John Inglis & Sons

TORONTO, : : : : : ONTARIO

Corliss Engines
Marine Engines
High Speed
Engines
Flour Mill
Machinery



Stationary Boilers
Marine Boilers
Water Tube Boilers
Shafting
Pulleys, etc.

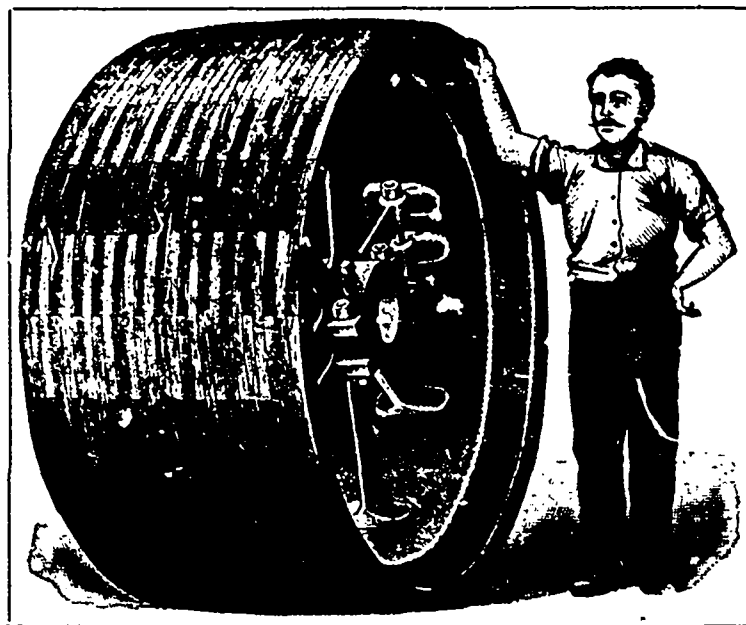
ENGINEERS, BOILER MAKERS and MILL BUILDERS

OUR - SPECIAL - PULLEY.

No More

Bursting

RIMS.



33 Per Cent.

Better

Belt

SURFACE.

MADE IN ALL SIZES UP TO 24 FEET DIAMETER.

HIGH CLASS WORK ONLY.

CORRESPONDENCE SOLICITED.

DODGE WOOD SPLIT PULLEY CO.,

Office: 63 King Street West, TORONTO, ONT.